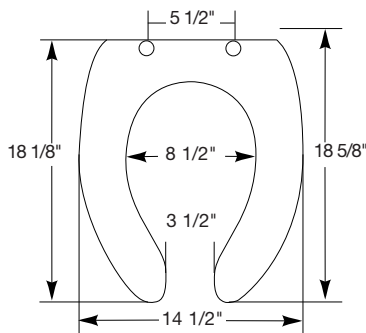




## COMMERCIAL PLASTIC SEATS

### MODEL 255SSC

- ELONGATED SEAT, OPEN FRONT LESS COVER
- SOLID PLASTIC
- CONCEALED 300 SERIES STAINLESS STEEL SELF-SUSTAINING CHECK HINGE



Ring thickness is 13/16"  
Ring thickness including the bumper is 1"  
Height of the seat with cover is 1-1/2"

Seats shall be No. 255SSC as manufactured by Church Seats. Seats shall be commercial weight and injection molded of solid plastic. Seats shall be open front less cover for elongated bowl and feature large molded-in bumpers. 300 Series stainless steel, self-sustaining concealed check hinge holds seat in any raised position up to 11 degrees beyond vertical. Uses 300 Series stainless steel hardware. Color to be white.

