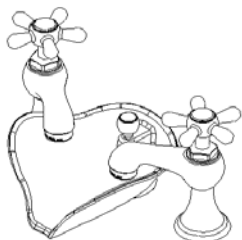


*Belle Forêt*  
collection



**N330 01**

## **N330**

### **TWO HANDLE LAVATORY FAUCET**

---

#### **Product Features**

8" Widespread Installation  
2.2 GPM @ 60PSI water saving aerator  
Brass body  
½" 14 NPS Inlet  
Ceramic cartridge  
Metal cross handle  
Pillar basin

#### **Standards/Approvals**

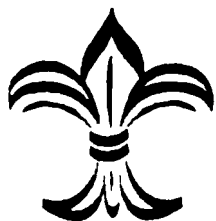
N300 meets or exceeds:  
ANSI/ASME A112.18.1  
ANSI/NSF 61 – Sec 9  
IAPMO/UPC  
California Proposition 65  
Massachusetts

**UPC®**



#### **PRODUCT SPECIFICATION:**

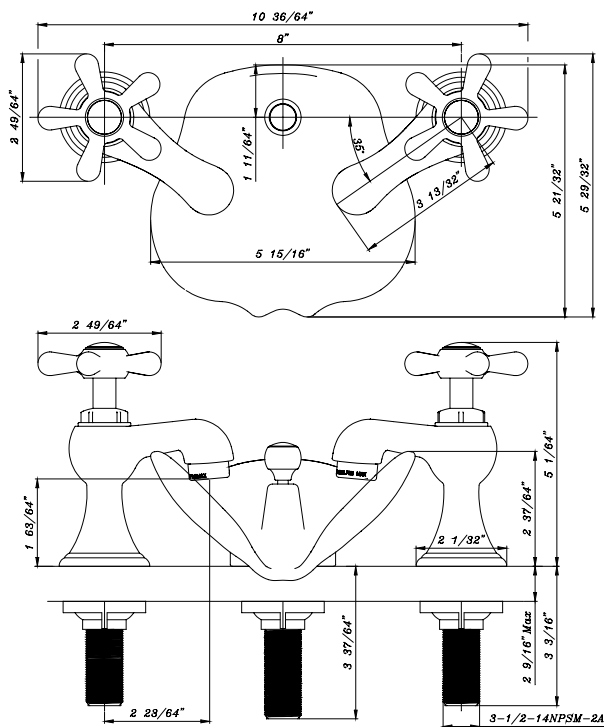
Two-handle lavatory faucet shall have a brass body, ceramic cartridge, 2-<sup>23</sup>/<sub>64</sub>" spout and metal cross handle. Product shall be able to be installed in 8" widespread installation. Product shall be Belle Forêt model N330 \_\_\_\_\_.



*Belle Forêt*  
collection

# N330

## TWO HANDLE LAVATORY FAUCET

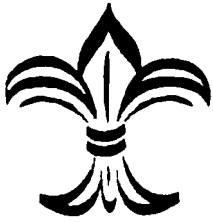


### Other Specifications

Faucet Hole diameter	1-1/2"
Max Deck Thickness	2 -9/16"

### Available Finishes

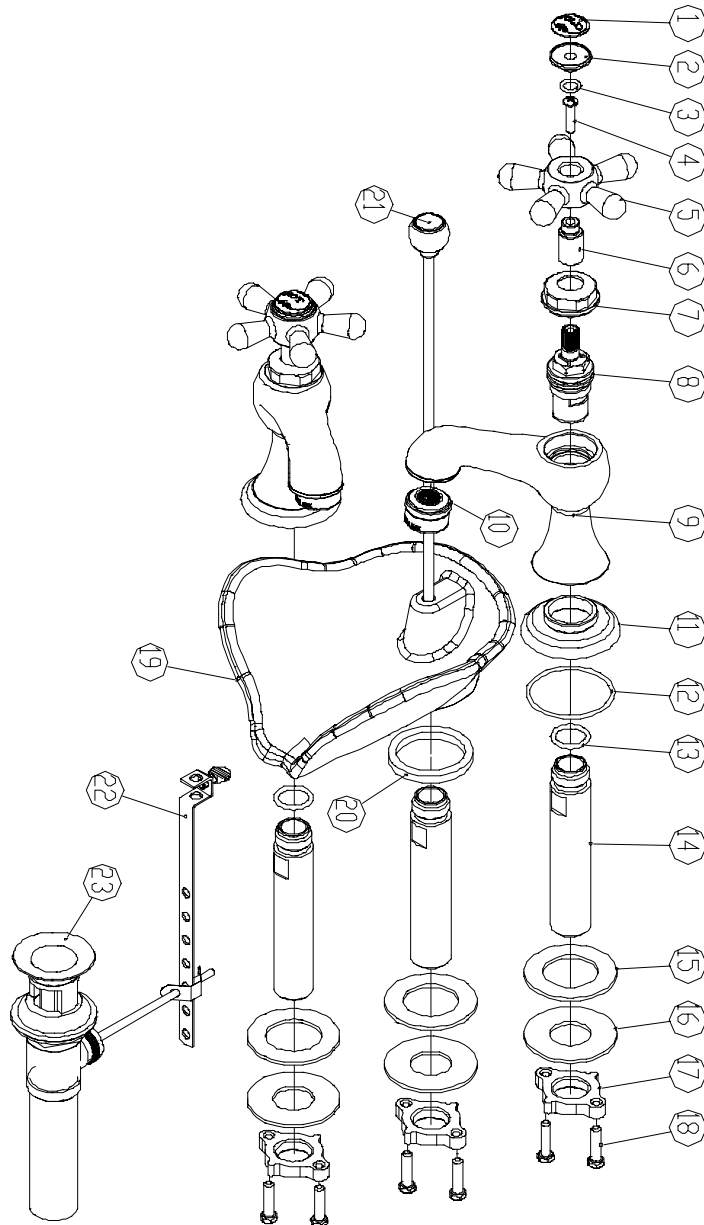
- Chrome
- Polished Brass
- Satin Nickel
- Oil Rubbed Bronze
- Matte Nickel
- Weathered Copper
- Polished Nickel

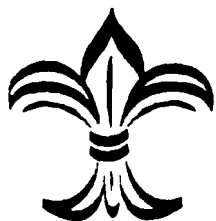


Belle Forêt  
collection

# N330 TWO HANDLE LAVATORY FAUCET

## PARTS BREAKDOWN





*Belle Forêt*  
collection

# N330

## TWO HANDLE LAVATORY FAUCET

### PARTS LISTING

No	Name	Kit# / Part#	Q'ty
1	porcelain index	663414xx	2
2	handle cap		2
3	O-RING		2
4	srcew		2
5	cross handle	N/A	2
6	connector		2
7	canopy		2
8	cartridge-hot	507375N	1
	cartridge-cold	507376N	1
9	spout	N/A	2
10	aerator		2
11	base		2
12	O-RING		2
13	O-RING		2
14	shank		3
15	seal		3
16	washer		3
17	nut		3
18	screw		6
19	pillar basin	049104WH	1
20	seal	010570	1
21	lift rod	665106xx	1
22	pivot rod		1
23	pop-up		1

xx designates finish matched parts.