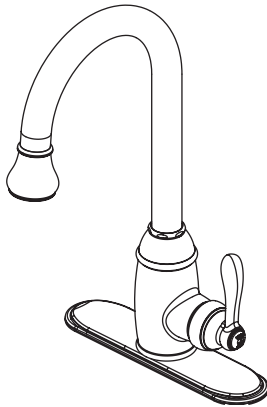




# N160 01

## SINGLE HANDLE KITCHEN FAUCET

---



### Product Features

- 1 or 3 Hole Installation
- 2.2 GPM @ 60PSI water saving aerator
- Brass body
- ½" 14 NPS Inlet
- Ceramic cartridge
- Metal lever handle



**N160 01**

### Standards/Approvals

- N160 01 meets or exceeds:
- ANSI/ASME A112.18.1
- ANSI/NSF 61 – Sec 9
- IAPMO/UPC
- California Proposition 65
- Massachusetts
- N160 01 meets ADA requirements

**UPC®**



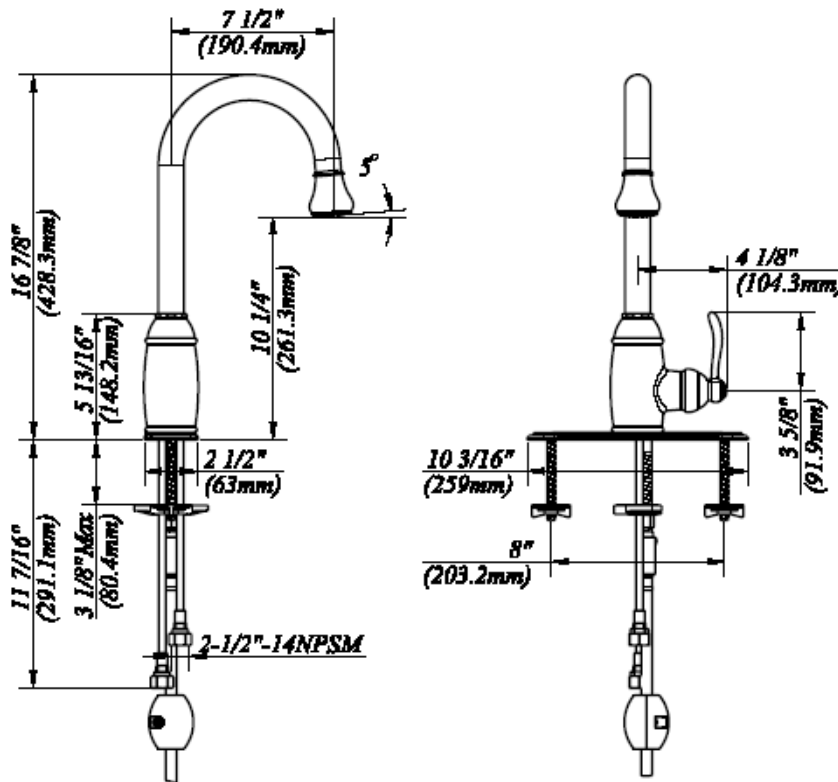
### PRODUCT SPECIFICATION:

Single handle pull down kitchen faucet shall have a brass body, ceramic cartridge, 7-1/2" spout, zinc lever handle. Product shall be able to be installed in 1hole installation. Product shall be Belle Forêt model N160 01.



# N160 01

## SINGLE HANDLE KITCHEN FAUCET



### Other Specifications

Faucet Hole diameter	1-1/2"
Deck plate	10-3/16" *2-1/2"
Max Deck Thickness	3"
Spout height	16-9/16"
Spout reach	7-1/2"
Aerator clearance	10"
Body base diameter	2-1/4"

### Available Finishes

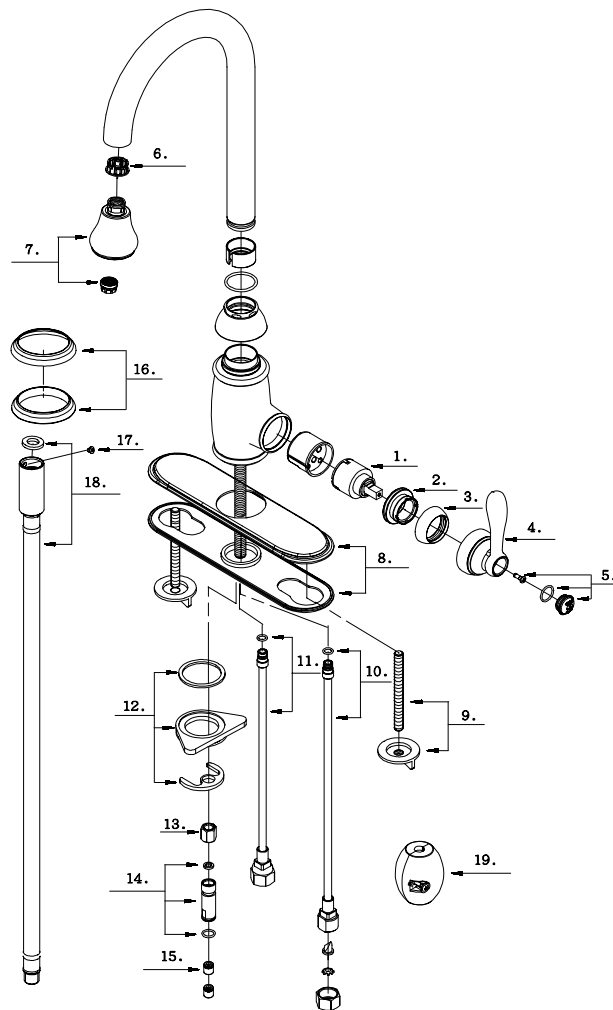
- Chrome
- Stainless Steel
- Oil Rubbed Bronze
- Tumbled Bronze



# N160 01

## SINGLE HANDLE KITCHEN FAUCET

### PARTS BREAKDOWN





# N160 01

## SINGLE HANDLE KITCHEN FAUCET

---

### PARTS LISTING

No.	Part Name	Part No.
1	Ceramic Disc Cartridge	A507348N
2	Locking Nut	A104261
3	Trim Cap	A103016XX
4	Metal Handle	A029625XX
5	Handle Cap	A66D771-50XX
6	Hose Guide	A126999KP
7	Hand Spray W/ Check valve	A523444NXX
8	Cover plate & Putty Plate	A66F106XX
9	Base Mounting Hardware	A663843
10	Supply Pipe- Hot	A603708N
11	Supply Pipe- Cold	A603707N
12	Mounting Hardware	A66D098ZN
13	Lock Nut	A054062
14	Shank Adaptor Assembly	A66D178N
15	Check Valve	A519204N
16	Base Trim Ring	A667295XX
17	Screw(5/32" -32 * 1/4" L)	A008048
18	Spray Hose	A66D614NXX
19	Weight	A504713

XX designates finish matched parts