



*Belle Forêt*  
collection

# N315

## Two Handle Vessel Filler

### Product Features

Wall Mount with variable rough-in depth

Minimum 2"

Maximum 2-7/8"

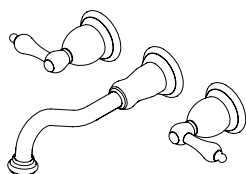
2.2GPM @60PSI water saving aerator

9-15/16" spout reach @ 2" rough-in

(8-3/8" @ 2-7/8" rough-in)

1/2" copper sweat inlets

Drip free ceramic cartridge



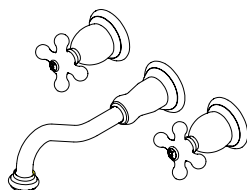
**N315 01**



Handle:

N315 01 Metal lever handle

N315 02 Metal cross handle



**N315 02**

### Standards/Approvals

N315 meets or exceeds:

ANSI/ASME A112.18.1

ANSI/NSF 61 – Sec 9

IAPMO/UPC

California Proposition 65

Massachusetts

N315 01 meets ADA requirements

**UPC®**



### PRODUCT SPECIFICATION:

Vessel filler shall have a brass body, ceramic cartridge, metal lever or cross handle.  
Product shall be Belle Forêt model N315 \_\_\_\_\_.

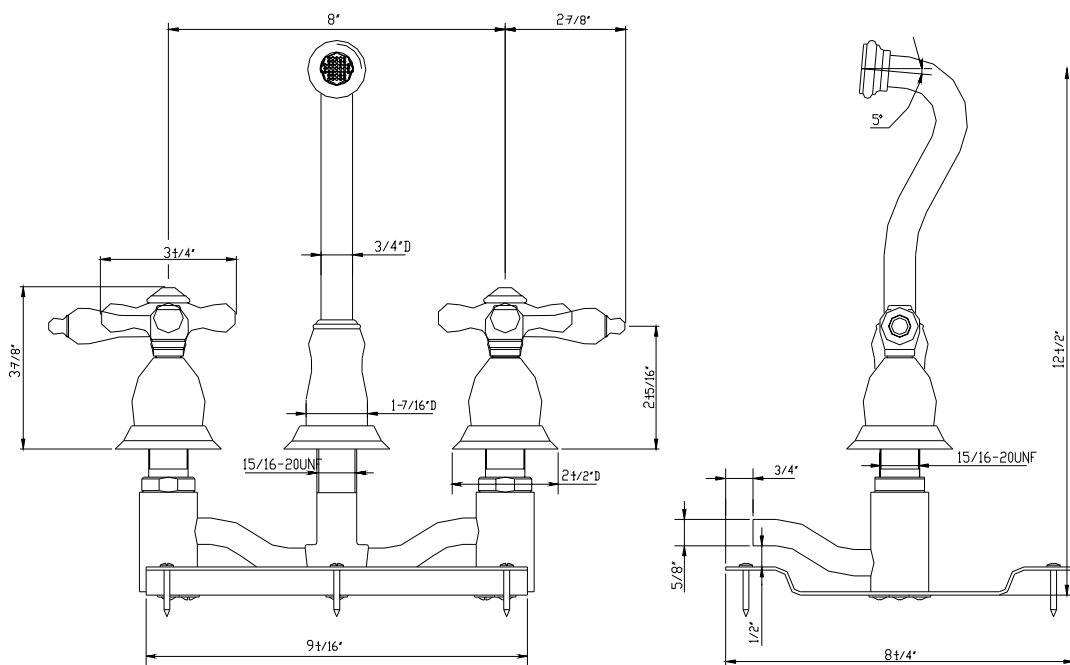


*Belle Forêt*  
collection

# N315

## Two Handle Vessel Filler

These measurements based on a rough-in of 2" from finished wall to mounting plate.



### Available Finishes

- Chrome
- Polished Brass
- Satin Nickel
- Oil Rubbed Bronze
- Matte Nickel
- Weathered Copper

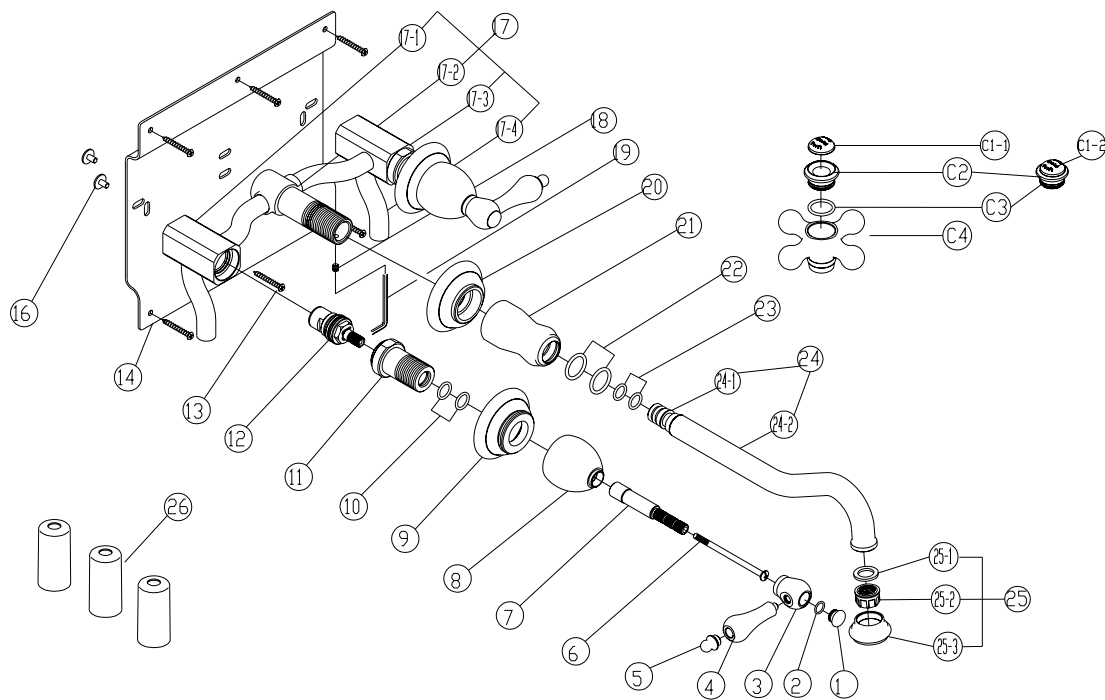


Belle Forêt  
collection

# N315

## Two Handle Vessel Filler

### PARTS BREAKDOWN





*Belle Forêt*  
collection

# N315

## Two Handle Vessel Filler

### PARTS LISTING

No	Name	Kit / Part #	Qty	No	Name	Kit / Part #	Qty
1	Index	663297xx	2	17	Body assembly	N/A	
2	O-RING		2	17-1			1
6	Screw		2	17-2			1
3	Handle hub	N/A	2	17-3			1
4	Lever handle		2	17-4			4
5	Knob		2	18	Set screw	663976	1
C1-1	Index-English	663997xx	2	19	Allen wrench		1
C2	Handle cap		2	22	O-RING	663197N	2
C3	O-RING		2	23	O-RING		2
C1-2	Index kit-French		2	20	Trim ring	666725xx	1
C2	Handle cap		2	21	Canopy		1
C3	O-RING		2	22	O-RING		2
C4	Cross handle		2	23	O-RING		2
6	Screw	2	24	Spout assembly			
7	Stem extension	2	24-1		1		
8	Canopy	2	24-2	1			
9	Trim ring	2	25	Aerator			
10	O-RING	4	25-1		1		
11	Body extension	2	25-2		1		
12	Hot Cartridge	507375N	1		25-3	1	
	Cold Cartridge	507376N	1	25	500768Nxx		
13	Screw	N/A	6	25-1		1	
14	Wall plate		1	25-2		1	
16	Screw		6	25-3		1	
				26	Protective sleeve	N/A	3

xx designates finish matched parts.