

American Standard

AMARILIS

LEXINGTON DECK-MOUNT BATH FILLERS

with EverClean™ Finish

Congratulations on purchasing your American Standard faucet with EverClean finish found only on American Standard faucets.

EverClean Finish

- One wipe effortlessly removes spots
- Eliminates the need for cleaners and scrubbing
- Permanent surface protectant remains beautiful for the life of the faucet
- EverClean™ available on: Polished Chrome, Satin Nickel, Stainless Steel, Polished Brass (or any combination of these finishes)

To ensure that your installation proceeds smoothly—please read these instructions carefully before you begin.

IMPORTANT NOTICE TO INSTALLER!

Please check with local Code Authority for the installation requirements of this product. Some codes require an additional temperature mixing valve to limit the maximum hot water temperature and vacuum breaker (for products with hand spray) to be installed with this product.

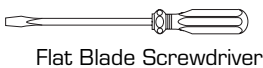
Installation Instructions 8970 SERIES 8971 SERIES



Certified to comply with ANSI A112.18.1M.
U.S. Patent No. 5,819,789

M66232 Rev. 1.1

Required Tools



Flat Blade Screwdriver



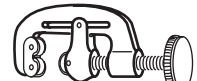
*Hex key



Adjustable Wrench



Channel Locks



Tubing Cutter



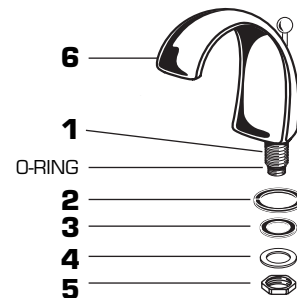
Phillips Screwdriver

*Supplied with Fitting

1 SPOUT INSTALLATION

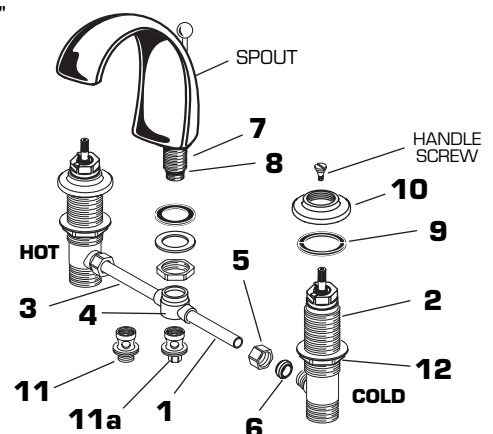
CAUTION Turn off hot and cold water supplies before beginning.

- Insert SPOUT SHANK (1) through center hole of bath tub LEDGE. Make sure that the RUBBER RING (2) is properly seated in recess at base of SPOUT (6).
- Attach RUBBER WASHER (3) and BRASS WASHER (4) to SHANK (1) from underside of ledge and secure SPOUT (6) position with LOCKNUT (5).



2 VALVE INSTALLATION

- Prepare TUBE and TEE ASSEMBLY (1) to fit existing VALVE (2) location (between 6-1/2" and 12"). If necessary, cut and/or bend TUBING (3) carefully. Make sure tube bend is close to the TEE (4) so that it will not effect the compression joint at the VALVE (2).
- Remove COUPLING NUT (5) and FERRULE (6) from each VALVE (2) and slide onto TUBING (3).
- Push TUBING (3) ends into VALVE (2) side outlets. Insert VALVES (2) into mounting holes from underside of ledge.
- Press TEE (4) onto SPOUT SHANK (7) making certain that the O-RING (8) is properly seated on SHANK (7).
- Tighten LOCKNUT (12) to secure VALVE (2) position. Attach COUPLING (11 or 11a) to TEE (4) and tighten. *Note: For product with Hand Shower, COUPLING (11) is tightened using a 10mm (3/8") Hex Wrench.*
- Place RUBBER RING (9) into ESCUTCHEON (10) and screw ESCUTCHEON (10) onto valve until snug against internal stop.
- Slide FERRULE (6) and COUPLING NUT (5) to outlet of VALVE (2) and tighten COUPLING NUT (5) firmly.
- Connect HOT water supply to inlet of left VALVE and COLD water supply to inlet of right VALVE using appropriate connector.

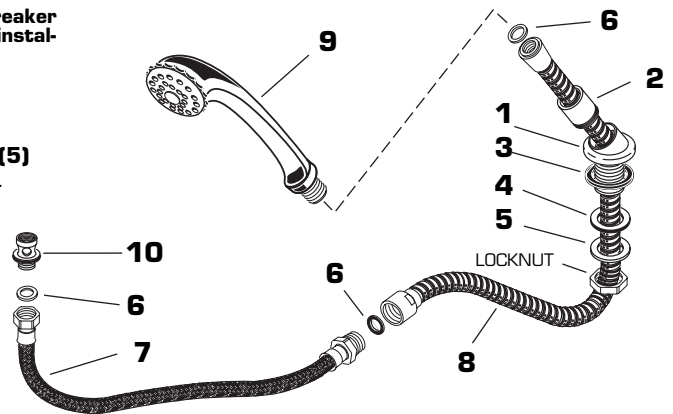


3 HANDSHOWER INSTALLATION (Mode 8971 series only)

IMPORTANT Check with local codes, and if required, add a vacuum breaker kit (part no. 028708) at specified height. Refer to the installation instructions supplied with the kit.

- Drop ESCUTCHEON (1) through the fourth hole of the tub ledge (12" max from SPOUT center) with HOLDER (2) directed towards tub center. Be sure RUBBER RING (3) is properly seated in ESCUTCHEON (1). Attach RUBBER WASHER (4) and BRASS WASHER (5) from underside of ledge. Secure ESCUTCHEON (1) by tightening locknut.
- Add SEAL WASHER (6) and connect HOSE (7) to outlet nipple on bottom of COUPLING (10). Tighten firmly.
- Unscrew HOLDER (2) from ESCUTCHEON (1). Slip SHOWER HOSE (8) with COUPLING NUT through HOLDER (2) and ESCUTCHEON (1). Install SEALS (6) and connect both HOSES (7, 8), attach HOLDER (2) to ESCUTCHEON (1) and connect HANDSHOWER (9).

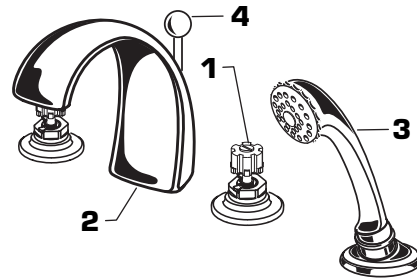
NOTE When not in use, HANDSHOWER should be seated in the HOLDER.



4 TEST INSTALLED FAUCET

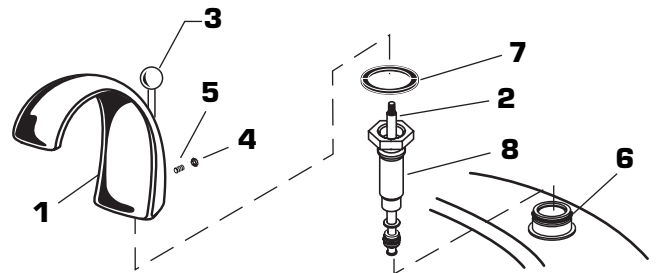
CAUTION The flow rate of this Tub Filler exceeds 20 gallons/minute at higher water pressure. Do not fill bathtub unattended.

- See separate "Instruction Sheet for handle installation.
- Turn VALVES (1) to "off" position.
- With handles in "off" position, turn on water supplies and check all connections for leaks.
- Operate both handles and flush water lines thoroughly.
- Check SPOUT (2) mounting for leaks.
- Lift HAND SHOWER (3) from holder, direct spray into tub, lift TRANSFER KNOB (4) to check HAND SHOWER (3) and HOSES for leaks.
- Turn VALVES "off."
- If spout drips, operate handles several times from OFF to ON position. Do not force - handles turn only 90°.



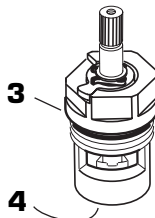
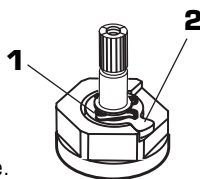
5 Before the bathroom is completely finished, you may want to remove spout, handshower, and handles.

- To remove handles, see separate "Instruction Sheet."
- To remove SPOUT (1), proceed as follows:
 - Lift TRANSFER ROD (2) and unscrew KNOB (3). (Model 3941 only).
 - Remove PLUG BUTTON (4) and remove SET SCREW (5) using 5mm hex wrench supplied.
 - Lift SPOUT (1) off SHANK (6) carefully and remove RUBBER RING (7).
 - Unscrew SHANK SLEEVE (8) and lift TRANSFER ROD (2) from SHANK (6) (Model 3901 & 3941 only).
 - Reverse sequence to re-install SPOUT (1). Be sure RUBBER RING (7) is properly seated in its recess at the base of the SPOUT (1). Make certain SET SCREW (5) is properly aligned and tight so that SPOUT (1) is locked in place.



6 SERVICE

- To change direction of handle rotation, proceed as follows:
 - Turn valve to OFF position.
 - Remove INSERT and HANDLE SCREW.
 - Slip HANDLE with ADAPTER off.
 - Remove SPRING CLIP (1).
 - Lift STOP WASHER (2), turn 90° and replace.
 - Replace SPRING CLIP (1).
 - Replace ADAPTER, HANDLE, SCREW, and INSERT.
- Plastic SCREEN (3) in CARTRIDGE (4) may accumulate dirt causing reduced water flow. To clean, first turn off hot and cold water supplies, then:
 - Remove HANDLE (see above).
 - Unscrew CARTRIDGE (3) with wrench.
 - Thoroughly rinse plastic SCREEN (4) at base of CARTRIDGE (3).
 - Replace CARTRIDGE (3) until flange is tight against valve body.
 - Turn valves OFF.
 - Replace ADAPTER, HANDLE, SCREW, and INSERT.



- To replace SHOWER HOSE, proceed as follows:
 - Disconnect HANDSHOWER.
 - Unscrew HOLDER and pull SHOWER HOSE until hose coupling appears.
 - Prevent HOSE from slipping back (use clamp, tape, etc.)
 - Disconnect SHOWER HOSE.
 - Remove HOLDER from old HOSE and slip over new SHOWER HOSE.
 - Insert new SEALS and connect HOSES and HANDSHOWER.
 - Open valves, lift transfer knob and check for leaks.
 - Release HOSE, screw HOLDER back to ESCUTCHEON, and seat HANDSHOWER.



HOT LINE FOR HELP
For toll-free information and answers to your questions, call:
1 (800) 442-1902
Weekdays 8:00 a.m. to 8:00 p.m. EST
IN CANADA 1-800-387-0369 (TORONTO 1-905-306-1093)
Weekdays 8:00 a.m. to 7:00 p.m. EST
IN MEXICO 01-800-839-12-00

Product names listed herein are trademarks of American Standard Inc.
© American Standard Inc. 1999

M66232 Rev.1.1