

### MAYBROOK™ 0.5 - 1.0 GPF WASHOUT URINAL

- Vitreous china
- Low-consumption (3.8 Lpf/1.0 gpf)
- Flushing rim
- Washout flush action
- Integral strainer
- 3/4" inlet spud
- Outlet spud with 1-1/2" tubing tailpiece
- Wall hanger
- Fixture only
- Meets ANSI flush requirements at 0.5 to 1.0 GPF

6581.015 Top spud

#### Nominal Dimensions:

324 x 324 x 457mm  
(12-3/4" x 12-3/4" x 18")

Recommended working pressure – between  
20 psi at valve when flushing and 80 psi static

#### Compliance Certifications -

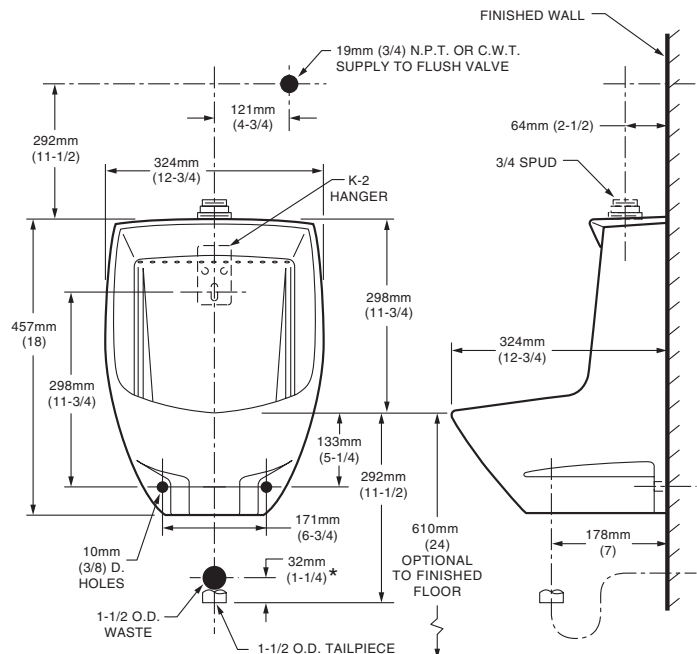
#### Meets or Exceeds the Following Specifications:

- ASME A112.19.2 for Vitreous China Fixtures



**To Be Specified:**

- Color:  White  Bone  Silver  Linen
- Flush Valve:
  - American Standard Selectronic™ #6063.101.002 DC Power (Top Spud)
- "P" Trap:



#### NOTES:

\* DIMENSIONS SHOWN FOR LOCATION OF "P" TRAP IS SUGGESTED. "P" TRAP AND FLUSH VALVE NOT INCLUDED AND MUST BE ORDERED SEPARATELY. PROVIDE SUITABLE REINFORCEMENT FOR ALL WALL SUPPORTS.

**IMPORTANT:** Dimensions of fixtures are nominal and may vary within the range of tolerances established by ANSI Standard A112.19.2. These measurements are subject to change or cancellation. No responsibility is assumed for use of superseded or voided pages.