

PRISON LAVATORY

- Vitreous china
- Integral spout and drinking nozzle
- Soap depression
- Outlet connection to slip 1-1/4" O.D. tubing

0 to 102mm (0" to 4") wall thickness:

- 0431.025** With hot and cold supply--drain with non-removable stopper
- 0421.026** With hot and cold supply--integral slow drain outlet

102 to 229mm (4" to 9") wall thickness:

- 0431.041** With hot and cold supply--drain with non-removable stopper
- 0421.067** With hot and cold supply--integral slow drain outlet

Nominal Dimensions:

356 x 324mm
(14" x 12-3/4")

Fixture Dimensions conform to ANSI Standard
A112.19.2



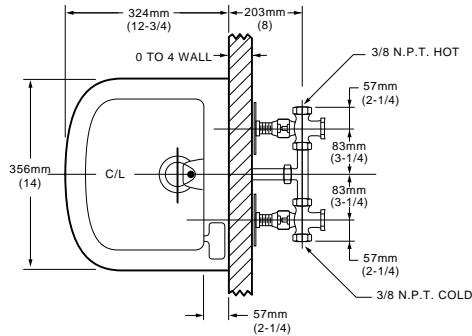
NOTE: Roughing-in information shown on reverse side of page

To Be Specified

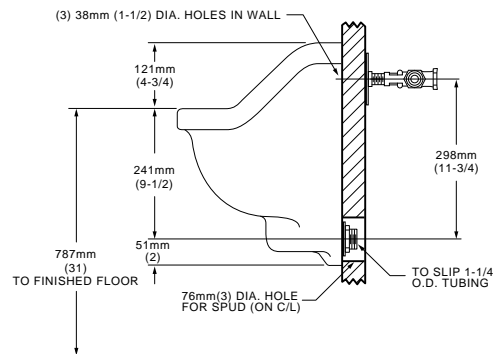
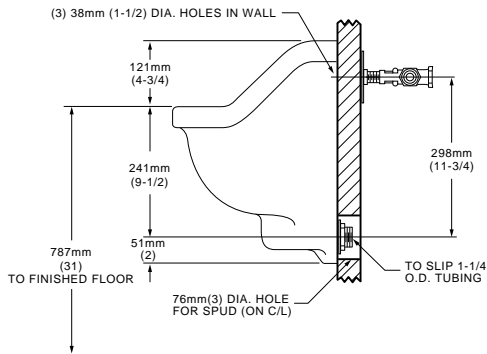
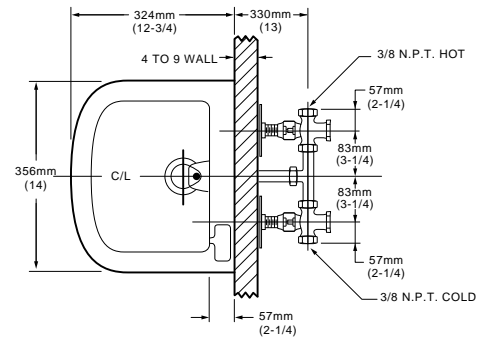
- 1-1/4" Trap:

Available in White only

0421.026
0431.025



0421.067
0431.041



NOTES:

THESE LAVATORIES DO NOT HAVE A TRAP. PROVISIONS MUST BE MADE FOR INSTALLATION OF TRAP IN WALL.
0431.SERIES SHOWN. 0421.SERIES SAME EXCEPT WITH INTEGRAL SLOW-DRAINING OUTLET.

IMPORTANT: Dimensions of fixtures are nominal and may vary within the range of tolerances established by ANSI Standard A112.19.2.
These measurements are subject to change or cancellation. No responsibility is assumed for use of superseded or voided pages.