

ELLISSE BUILT-IN WHIRLPOOL

Whirlpool Featuring System I:

- 2703.118W** End Mount Pump, **Right** Hand Outlet
- 2703.218W** End Mount Pump, **Left** Hand Outlet
- 2705.118W** Front Mount Pump, **Right** Hand Outlet
- 2705.218W** Front Mount Pump, **Left** Hand Outlet
 - Acrylic with fiberglass reinforcement
 - Pre-leveled tub bottom
 - Dual, molded-in arm rests
 - Integral 3-sided tiling/water retention flange
 - 1.5 HP single speed, self-draining pump/motor
 - Factory installed power cord and plug
 - Six multi-directional and flow-adjustable jets including:
 - Two foot jets
 - Two body massage jets
 - Two back-rest jets
 - Deck-mounted air switch On/Off
 - Two silent air volume controls
 - Quick Connect Safe-T-Heater connection system
 - Factory installed and tested whirlpool system

StayClean™ Whirlpool Featuring System I:

- 2703.118WC** End Mount Pump, **Right** Hand outlet
- 2703.218WC** End Mount Pump, **Left** Hand outlet
- 2705.118WC** Front Mount Pump, **Right** Hand outlet
- 2705.218WC** Front Mount Pump, **Left** Hand outlet
 - Same as above except with the StayClean™ whirlpool system featuring Antimicrobial AlphaSan®

Nominal Dimensions: 1524 x 813 x 546mm
(60" x 32" x 21-1/2")

Compliance Certifications -

Meets or Exceeds the Following Specifications:

- Underwriters Laboratories - Hydromassage Bathtubs UL 1795
- ASME A112.19.7M for Whirlpool Appliances
- ANSI Z124.1 for Plastic Bathtubs
- ASTM E162 for Flammability
- NFPA 258 for Smoke Density

NOTE: Roughing-in dimensions and product specifications shown on reverse side of page.



To Be Specified - Required:

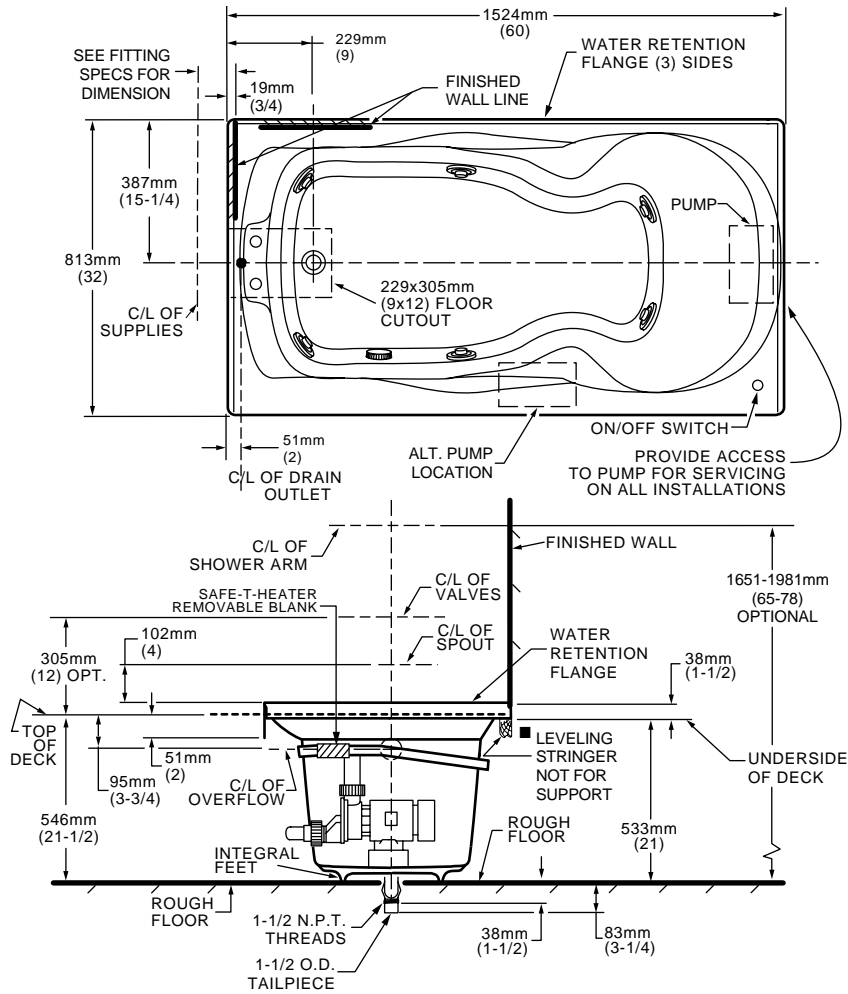
- Color:
- Bath Filler: (specify finish)
- Bath Drain: 1583.470 (specify finish)
- Grab Bar Kit: 9827-200-two per kit (specify finish)

To Be Specified - Optional:

- Safe-T-Heater*: 9075.120
- Ellisse Apron: 9160.2705(specify color)
- Jet Trim Ring Kit: 9860.200-two per kit (specify finish)

For color/finish availability and other faucet choices, please see the Product Selector and Pricing Guide.

* **NOTE:** the Safe-T-Heater is designed to maintain water temperature during operation. It will not heat cold water to desired bathing temperature.



GENERAL SPECIFICATIONS FOR 2703/5 WHIRLPOOL	
INSTALLED SIZE	60 x 32 x 21-1/2 In. (1524 x 813 x 546mm)
WEIGHT	141 Lbs. (63 Kg.)
WEIGHT w/WATER	643 Lbs. (292 Kg.)
GAL. TO OVERFLOW	60 Gal. (277 L)
WHIRLPOOL MIN. OPERATING VOL.	50 Gal. (189 L)
BATHING WELL AT SUMP	44-1/2 X 20 In. (1130 mm X 508 mm)
BATHING WELL AT RIM	58 X 26-1/4 In. (1473 mm X 667 mm)
WATER DEPTH TO OVERFLOW	14-1/2 In. (368 mm)
FLOOR LOADING (PROJECTED AREA)	48 Lbs./Sq.Ft. (231 Kgs./Sq.m)
PTS.	20.8
CUBE (FT ³)	35.3
WHIRLPOOL ELECTRICAL SPECIFICATIONS	
SYSTEM I PUMP	1.6 HP, 9.7 AMPS, 120V.
SYSTEM II PUMP	2.1 HP, 15.6 AMPS, 120V.

NOTES:

BATH MUST BE INSTALLED ABOVE THE FLOOR LINE AS BUILT-IN INSTALLATION. SUMP OF BATH IS SUPPORTED BY INTEGRAL FEET. NO ADDITIONAL SUPPORT REQUIRED. ENCLOSING MATERIAL BY OTHERS.

REFER TO INSTALLATION INSTRUCTIONS SUPPLIED WITH WHIRLPOOL FOR ADDITIONAL INFORMATION.

OPTIONAL APRON NO. 9160.2705 & GRAB BAR KIT NO.9827.200 AVAILABLE AND MUST BE ORDERED SEPARATELY.

FITTINGS NOT INCLUDED AND MUST BE ORDERED SEPARATELY.

LEFT HAND OUTLET SHOWN, RIGHT HAND REVERSE DIMENSIONS 2703.118W/2705.118W.

PROVIDE SUITABLE REINFORCEMENT FOR ALL SUPPORTS.

IF INSTALLING A DECK-MOUNTED FITTING, BEFORE DRILLING ANY HOLES: CHECK FOR INTERFERENCE WITH CIRCULATING SYSTEM PIPING, DRAIN OVERFLOW, AND APRON INSTALLATION. MOUNTING HOLES DRILLED BY INSTALLER.

ON SYSTEM II: CONTROL MODULE TO BE MOUNTED BEHIND ACCESS PANEL, A MINIMUM OF 152mm (6) ABOVE ROUGH FLOOR.

IMPORTANT: Dimensions of fixtures are nominal and may vary within the range of tolerances established by ANSI Standard Z124.1. These measurements are subject to change or cancellation. No responsibility is assumed for use of superseded or voided pages.

ELLISSE BUILT-IN WHIRLPOOL

Whirlpool Featuring System II:

- 2703.128W** End Mount Pump, **Right** Hand Outlet
- 2703.228W** End Mount Pump, **Left** Hand Outlet
- 2705.128W** Front Mount Pump, **Right** Hand Outlet
- 2705.228W** Front Mount Pump, **Left** Hand Outlet
 - Acrylic with fiberglass reinforcement
 - Pre-leveled tub bottom
 - Dual, molded-in arm rests
 - Integral 3-sided tiling/water retention flange
 - 2.0 HP, two speed, self-draining pump/motor with pulse feature
 - Factory installed power cord and plug
 - Six multi-directional and flow-adjustable jets including:
 - Two foot jets
 - Two body massage jets
 - Two back-rest jets
 - Deck-mounted electronic control with 20 minute built-in timed safety shut off and Chrome Bezel
 - Two silent air volume controls
 - Quick Connect Safe-T-Heater connection system
 - Factory installed and tested whirlpool system

StayClean™ Whirlpool Featuring System II:

- 2703.128WC** End Mount Pump, **Right** Hand outlet
- 2703.228WC** End Mount Pump, **Left** Hand outlet
- 2705.128WC** Front Mount Pump, **Right** Hand outlet
- 2705.228WC** Front Mount Pump, **Left** Hand outlet
 - Same as above except with the StayClean™ whirlpool system featuring Antimicrobial AlphaSan®

Nominal Dimensions: 1524 x 813 x 546mm
(60" x 32" x 21-1/2")

Compliance Certifications -

Meets or Exceeds the Following Specifications:

- Underwriters Laboratories - Hydromassage Bathtubs UL 1795
- ASME A112.19.7M for Whirlpool Appliances
- ANSI Z124.1 for Plastic Bathtubs
- ASTM E162 for Flammability
- NFPA 258 for Smoke Density

NOTE: Roughing-in dimensions and product specifications shown on reverse side of page.



To Be Specified - Required:

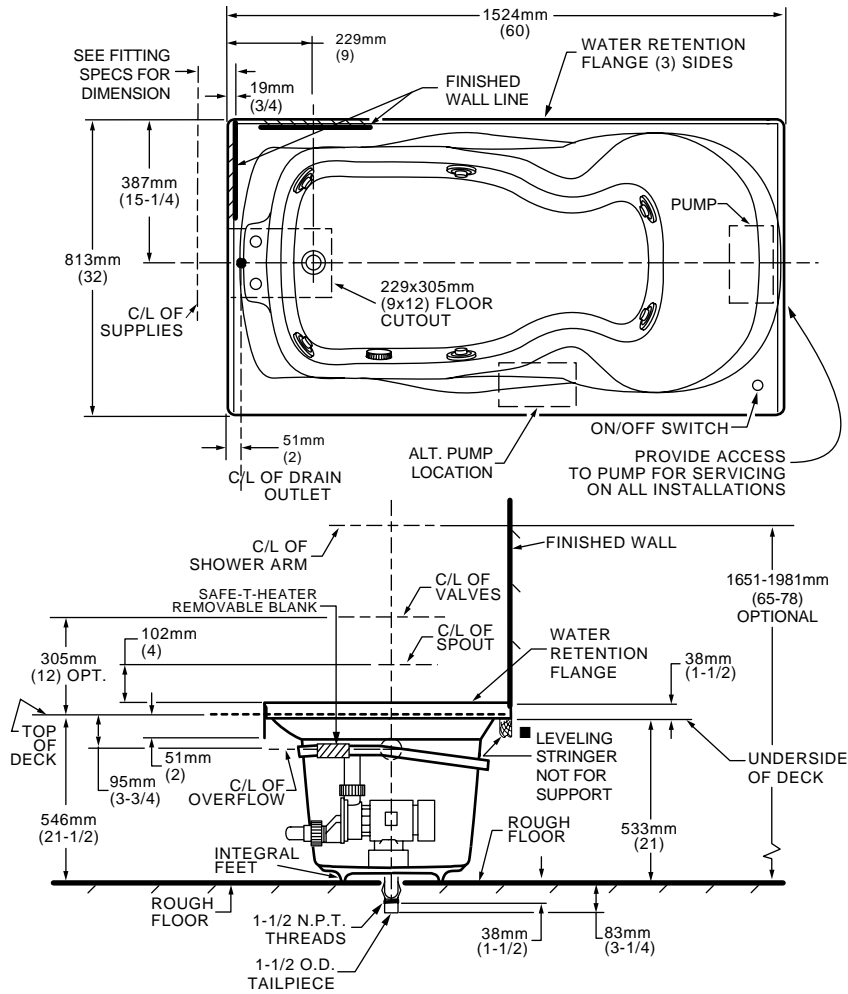
- Color:
- Bath Filler: (specify finish)
- Bath Drain: 1583.470 (specify finish)
- Grab Bar Kit: 9827-200-two per kit (specify finish)

To Be Specified - Optional:

- Safe-T-Heater*: 9075.120
- Ellisse Apron: 9160.2705(specify color)
- Jet Trim Ring Kit: 9860.200-two per kit (specify finish)
- System II Control Bezel: 9861.200-two per kit (specify finish)

For color/finish availability and other faucet choices, please see the Product Selector and Pricing Guide.

* **NOTE:** the Safe-T-Heater is designed to maintain water temperature during operation. It will not heat cold water to desired bathing temperature.



GENERAL SPECIFICATIONS FOR 2703/5 WHIRLPOOL	
INSTALLED SIZE	60 x 32 x 21-1/2 In. (1524 x 813 x 546mm)
WEIGHT	141 Lbs. (63 Kg.)
WEIGHT w/WATER	643 Lbs. (292 Kg.)
GAL. TO OVERFLOW	60 Gal. (277 L)
WHIRLPOOL MIN. OPERATING VOL.	50 Gal. (189 L)
BATHING WELL AT SUMP	44-1/2 X 20 In. (1130 mm X 508 mm)
BATHING WELL AT RIM	58 X 26-1/4 In. (1473 mm X 667 mm)
WATER DEPTH TO OVERFLOW	14-1/2 In. (368 mm)
FLOOR LOADING (PROJECTED AREA)	48 Lbs./Sq.Ft. (231 Kgs./Sq.m)
PTS.	20.8
CUBE (FT ³)	35.3
WHIRLPOOL ELECTRICAL SPECIFICATIONS	
SYSTEM I PUMP	1.6 HP, 9.7 AMPS, 120V.
SYSTEM II PUMP	2.1 HP, 15.6 AMPS, 120V.

NOTES:

BATH MUST BE INSTALLED ABOVE THE FLOOR LINE AS BUILT-IN INSTALLATION. SUMP OF BATH IS SUPPORTED BY INTEGRAL FEET. NO ADDITIONAL SUPPORT REQUIRED. ENCLOSING MATERIAL BY OTHERS.

REFER TO INSTALLATION INSTRUCTIONS SUPPLIED WITH WHIRLPOOL FOR ADDITIONAL INFORMATION.

OPTIONAL APRON NO. 9160.2705 & GRAB BAR KIT NO.9827.200 AVAILABLE AND MUST BE ORDERED SEPARATELY.

FITTINGS NOT INCLUDED AND MUST BE ORDERED SEPARATELY.

LEFT HAND OUTLET SHOWN, RIGHT HAND REVERSE DIMENSIONS 2703.118W/2705.118W.

PROVIDE SUITABLE REINFORCEMENT FOR ALL SUPPORTS.

IF INSTALLING A DECK-MOUNTED FITTING, BEFORE DRILLING ANY HOLES: CHECK FOR INTERFERENCE WITH CIRCULATING SYSTEM PIPING, DRAIN OVERFLOW, AND APRON INSTALLATION. MOUNTING HOLES DRILLED BY INSTALLER.

ON SYSTEM II: CONTROL MODULE TO BE MOUNTED BEHIND ACCESS PANEL, A MINIMUM OF 152mm (6) ABOVE ROUGH FLOOR.

IMPORTANT: Dimensions of fixtures are nominal and may vary within the range of tolerances established by ANSI Standard Z124.1. These measurements are subject to change or cancellation. No responsibility is assumed for use of superseded or voided pages.