



BARRIER FREE

YORKVILLE™ 16-1/8" ELONGATED PRESSURE-ASSISTED TOILET

2325.101

- Vitreous china
- Low-consumption (6.0 Lpf/1.6 gpf)
- **Floor-mounted, back-outlet toilet**
- Elongated 16-1/8" high bowl
- Pressure-assisted siphon jet action
- Side-mounted chrome trip lever
- Close-coupled flushometer tank*
- Speed Connect™ tank/bowl coupling system
- 4 bolt caps
- Fully glazed 2" ballpass trapway
- 10" x 12" water surface area
- 100% factory flush tested

3125.016 Bowl

4099.100 Tank

Nominal Dimensions:

32-1/4" x 19-1/2" x 31-5/8"
(819 x 495 x 803mm)

Fixture only, seat and supply by others

Compliance Certifications - Meets or Exceeds the Following Specifications:

- ASME A112.19.2M (and 19.6M) for Vitreous China Fixtures - includes Flush Performance, Ball Pass Diameter, Trap Seal Depth and all Dimensions

Recommended static pressure range
20 psi - 80 psi

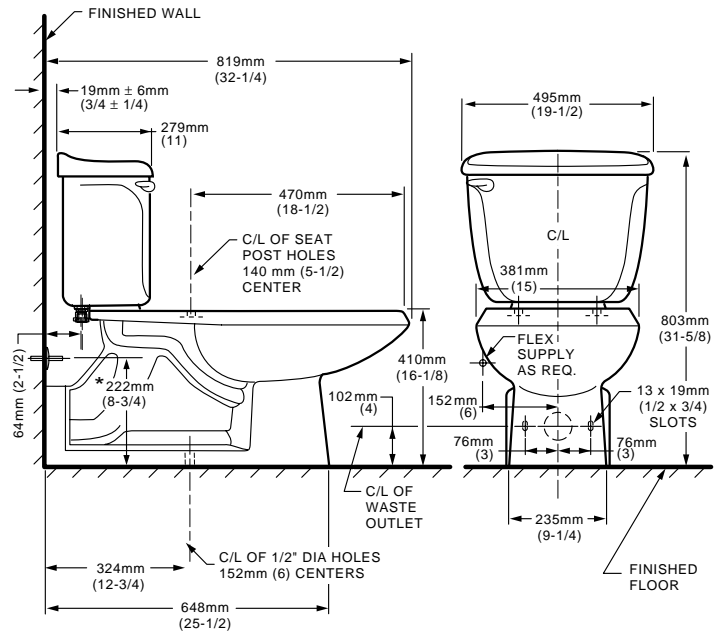
To Be Specified

- Color:
- Seat: American Standard #5324.019 Elongated "Rise and Shine" (with easy to clean lift-off hinge system) solid plastic open front seat with cover. See page TB-001.
- Seat: American Standard #5325.019 Elongated "Rise and Shine" (with easy to clean lift-off hinge system) solid plastic open front seat with cover. See page TB-001.
- Alternate Seat:
- Supply with stop:

* Flushmate III tank system by Flushmate® Div. of Sloan Valve Co



Replaces 2325.100



NOTES:
WASTE OUTLET SEAL RING MUST BE NEOPRENE OR GRAPHITE-FELT (WAX RING NOT RECOMMENDED)
 SUPPLY NOT INCLUDED WITH FIXTURE AND MUST BE ORDERED SEPARATELY.
 * DIMENSION SHOWN FOR LOCATION OF SUPPLY IS SUGGESTED.
 FOR ADDITIONAL INFORMATION REFER TO INSTALLATION INSTRUCTIONS SUPPLIED.
 IMPORTANT: Dimensions of fixtures are nominal and may vary within the range of tolerance established by ANSI Standard A112.19.2
 These measurements are subject to change or cancellation. No responsibility is assumed for use of superseded or voided pages.



● When installed so top of seat is 432 to 483mm (17" to 19") from the finished floor.
MEETS THE AMERICAN DISABILITIES ACT GUIDELINES AND ANSI A117.1 REQUIREMENTS FOR ACCESSIBLE AND USEABLE BUILDING FACILITIES-CHECK LOCAL CODES.