

ANTIQUITY™ ELONGATED ONE-PIECE TOILET

2038.016

- Vitreous china
- Low-consumption (6.0 Lpf/1.6 gpf)
- One-piece design
- Elongated siphon jet action bowl with 2" trapway
- Rim height at 381mm (15")
- Design-matched solid plastic seat and cover (5357-016) included
- Chrome-plated side mounted trip lever
- 2 bolt caps
- Internal trapway area fully glazed
- 100% factory flush tested
- Part of Antiquity series of design-matched fixtures



Nominal Dimensions:

737 x 457 x 686mm
 (29" x 18" x 27")

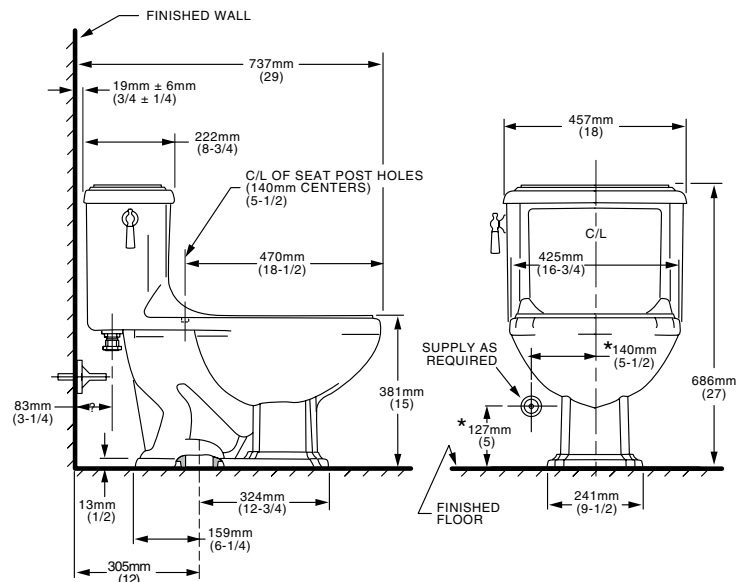
Fixture only, supply by others

Compliance Certifications - Meets or Exceeds the Following Specifications:

- ASME A112.19.2M for Vitreous China Fixtures - includes Flush Performance, Ball Pass Diameter, Trap Seal Depth and all Dimensions

To Be Specified:

- Color:
 - White Bone Linen Silver
 - Fawn Beige Black
- Trip Lever: 730283-XXX0A
 - 002 Chrome (supplied)
 - 008 Polished Nickel
 - 020 White
 - 021 Bone
 - 068 Blackened Bronze
 - 099 Polished Brass
 - 295 Satin Nickel



NOTES:
 THIS TOILET IS DESIGNED TO ROUGH-IN AT A MINIMUM DIMENSION OF 305MM (12") FROM FINISHED WALL TO C/L OF OUTLET.
 SUPPLY NOT INCLUDED WITH FIXTURE AND MUST BE ORDERED SEPARATELY.
 * DIMENSION SHOWN FOR LOCATION OF SUPPLY IS SUGGESTED.

IMPORTANT: Dimensions of fixtures are nominal and may vary within the range of tolerance established by ANSI Standard A112.19.2. These measurements are subject to change or cancellation. No responsibility is assumed for use of superseded or voided pages.