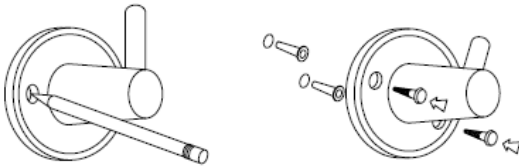


❑ Installation ❑ Maintenance Instructions

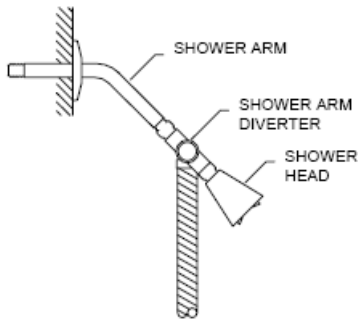
Wall Mount/Swivel Mount Installation

Position wall mount where desired (shower head will be approximately 4" above mount). Mark hole locations on wall surface. Be sure mount is straight. Remove mount. Slightly nick center of holes with center punch. Drill holes. Insert plastic anchors into holes. Place mount in position insert screws. Tighten.

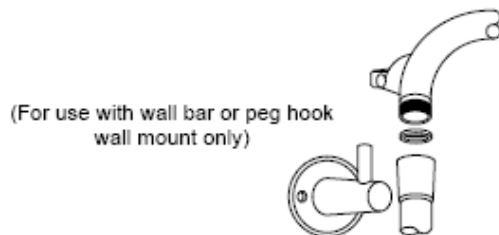


Shower Arm Diverter Installation

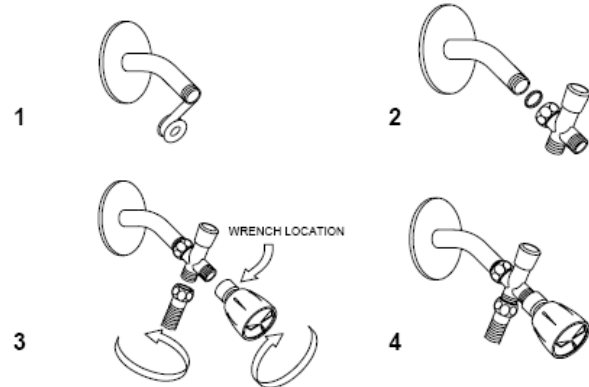
Shower arm diverter used in the "-HS" assembly should be installed between the shower arm & shower head.



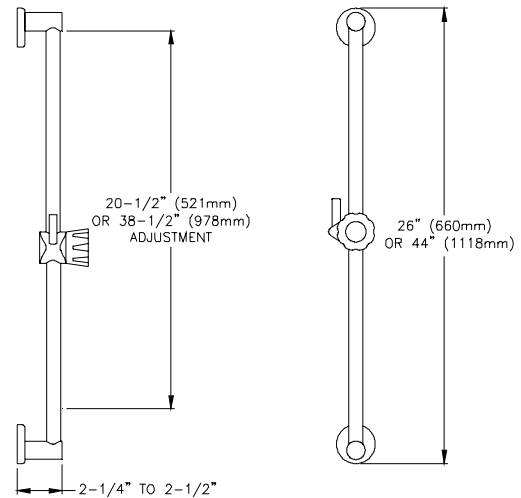
Thread swivel connection on to your present shower arm. Be sure all gaskets are in place. Attach shower head onto end of diverter in-line with shower arm. Attach hose to fitting 90° from center-line of shower head. Tighten all fittings and your shower is ready to use.



Diverter Valve Installation



Wall Bar Installation



-VB Option: If your hand shower assembly has been equipped with an in-line (-VB) vacuum breaker, be sure hose end with vacuum breaker is connected at water supply end (NOT TO HANDSET).