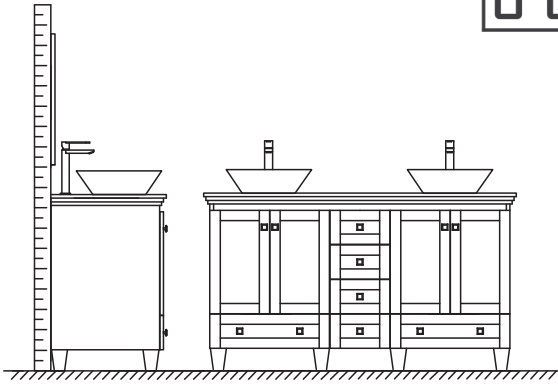
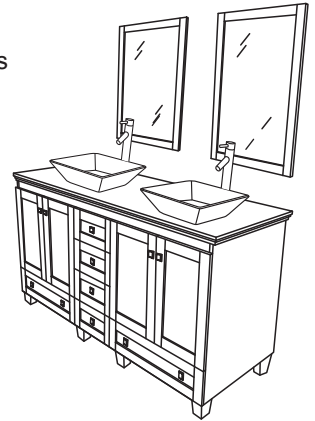


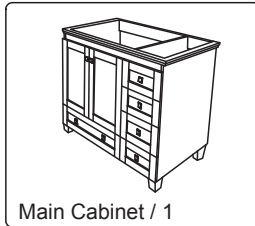
WYNDHAM COLLECTION



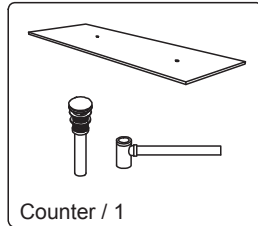
- Prior to installation, please check received items against the "Packing List".
- Please report any missing items to your retailer immediately
- Protect all surfaces from sharp objects, high heat sources, direct prolonged sunlight and chemical hazards.
- Professional installation recommended.



PACKING LIST

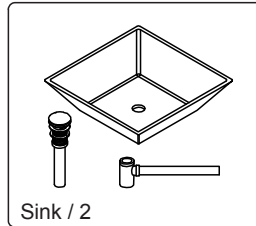


Main Cabinet / 1



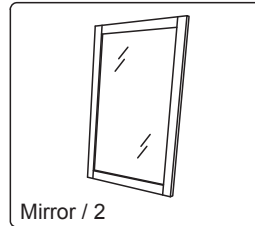
Counter / 1

OPTIONAL



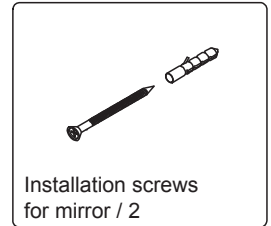
Sink / 2

OPTIONAL



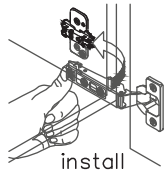
Mirror / 2

OPTIONAL

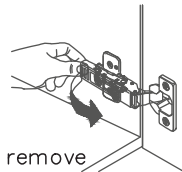


Installation screws
for mirror / 2

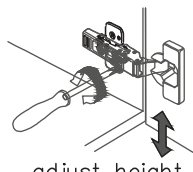
INSTALLATION AND ADJUSTMENT OF HINGES



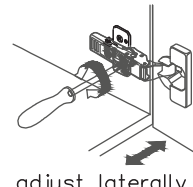
install



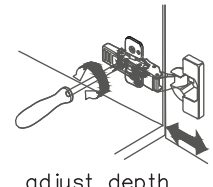
remove



adjust height

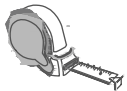


adjust laterally



adjust depth

REQUIRED TOOLS NOT IN BOX



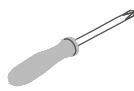
Tape measure



Pencil



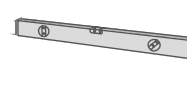
Electric Drill



Phillips Screwdriver



Adjustable Wrench



Spirit Level

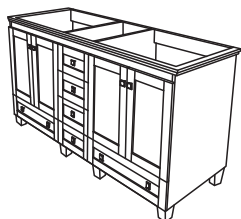


Silicone sealant

WC-CG8000-60
OVERMOUNT INSTALLATION

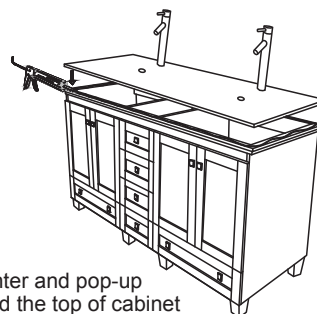
WYNDHAM COLLECTION

INSTALLATION INSTRUCTIONS

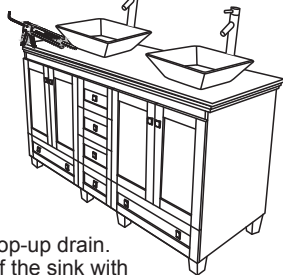


Cut hole in
back of cabinet

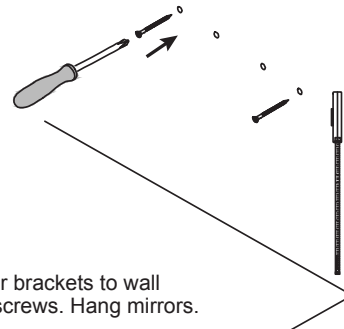
① Installer must cut appropriately sized hole in back of cabinet to accommodate existing placement of hot&cold wall valves and drains



② Install the counter and pop-up drain. Seal around the top of cabinet with clear or white silicone sealant.



③ Install the sink and pop-up drain. Seal around the base of the sink with clear or white silicone sealant.



④ Attach mirror brackets to wall with supplied screws. Hang mirrors.

WC-CG8000-60
OVERMOUNT INSTALLATION