

Molten Bronze

- Limited Lifetime Mechanical Warranty

Standard Collection Features

- 5-Pin Cylinder
- Weslock keyway (optional Schlage Keyway)
- Exceeds ANSI A 156.2 Grade II lock standards

- Limited 10 Year Finish Warranty

Standard Collection Specifications

- Adjustable latches 2-3/8" or 2-3/4" with removable faceplates
- Optional door thickness up to 2-1/4"

Entry Handle Standard Features

- Solid Molten Brass
- 1" Throw bolt with two hardened steel rollers prevent sawing
- Removable knob/lever prevents scratching during installation
- Heavy Duty Security Strikes with 3" screws

Specifications

- Adjusts to door thickness from 1-3/4" - 2"

-Castletown/Aspen

- Fits doors prepared with 2-1/8" top (1-5/8" optional) and 2-1/8" bottom cross holes and 1" edge hole
- 5-1/2" center to center cross hole spacing (minimum 5-1/4")

-Stonebriar/Wiltshire/Tramore/ Greystone/Rockford

- Fits doors prepared with 2-1/8" top (1-5/8" optional) and 2-1/8" bottom cross holes and 1" edge hole
- 5-1/2" minimum center to center cross hole spacing
- Interconnect feature available



ASPEN



GREYSTONE



ROCKFORD



TRAMORE



CASTLETOWN



STONEBRIAR



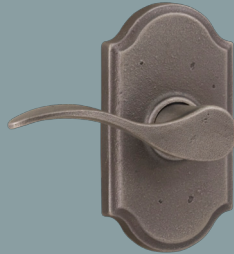
WILTSHIRE



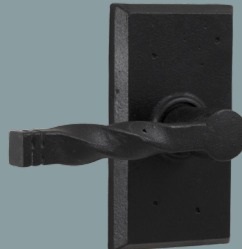
DURHAM KNOB



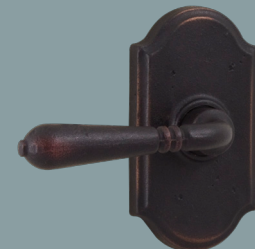
WEXFORD KNOB



CARLOW LEVER



MONOGHAN LEVER



WATERFORD LEVER

Knob & Lever Standard Features

- Cylindrical Door Locks
- ADA compliant levers
- Panic-Proof keylock/privacy– one turn of interior knob/lever unlocks & opens door
- Push button locking in rosette
- Solid Molten Bronze levers, knobs, and rosettes
- Removable knob/lever prevents scratching during installation

Specifications

- Adjusts to door thickness from 1-3/8" to 1-3/4"
- Fits doors prepared with 2-1/8" cross hole & 1" edge hole

Rosettes



Square



Premiere



Sutton

Finishes

Style	1	2	P
Durham/Wexford Knob			
Premiere	•	*	•
Square	•	•	•
Carlow/Waterford Lever			
Premiere	•	*	•
Square	•	•	•
Monaghan Lever			
Square	•	•	•
Deadbolts			
Premiere	•	*	•
Square	•	•	•
Aspen Entry Handle	•	•	•
Castletown Entry Handle	•	*	•
Greystone Entry Handle	•	•	•
Rockford Entry Handle	•	•	•
Stonebriar Entry Handle	•	*	•
Tramore Entry Handle	•	*	•
Wiltshire Entry Handle	•	*	•



Premiere



Square

Deadbolt Standard Features

- 1" Throw bolt with two hardened steel rollers prevent sawing
- Heavy Duty Security Strikes with 3" screws

Specifications

- Fits doors prepared with 2-1/8" cross hole (1-5/8" optional) and 1" edge hole
- Adjusts to door thickness from 1-3/8" - 2"



*Special Order Only. Lead time may be up to 10 weeks.