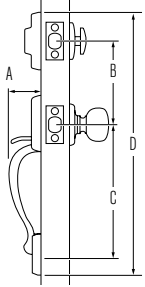
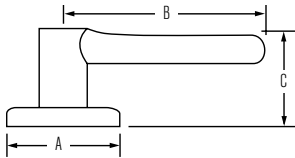


HANDLESETS



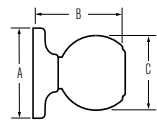
Design	A	B	C	D
Kingsway	2-7/32"	5-1/2"	8-13/32"	17-7/16"

LEVERS



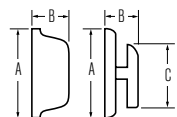
Design	A	B	C	C (Keyed)
Alfini	2-5/8"	3-3/4"	2-1/4"	2-5/8"
Kim	2-5/8"	3-5/8"	1-15/16"	2-5/8"

KNOBS



Design	A	B	C
Beverly	2-19/32"	2-7/16"	2"
Fairfax	2-5/8"	2-11/32"	1-15/16"
Yukon	2-5/8"	2-23/32"	1-7/8"

DEADBOLT



Design	A	B	C	D
GD 9471	2-1/2"	1-1/8"	1-3/4"	1"
GD 9371	2-1/2"	1-1/8"	1-3/4"	1-1/8"
GD 9671	2-1/2"	1-1/16"	1-3/4"	1"
GD 9671M	2-5/8"	1-1/16"	1-3/4"	1"

HANDLESETS

Door Prep	Deadbolt: Cross Bore 2-1/8" or 1-1/2" Edge Bore 1" Latch Face 1" x 2-1/4"
	Handle: Cross Bore 2-1/8". Edge Bore 1" Latch Face 1" x 2-1/4"
Backset	Deadbolt: Adjustable to 2-3/8" or 2-3/4" Handle: Adjustable to 2-3/8" or 2-3/4"
Door Thickness	1-3/4" doors standard. 2-1/4" doors optional
Cylinder	SmartKey or KW or WS 5 pin
Faceplate	1" x 2-1/4" Specify round corner or square corner or drive-in

Strikes	Deadbolt: 1-1/8" x 2-3/4" Specify round corner or square corner Handle: 2-1/4" full lip Specify round corner or square corner Other options available
----------------	---

Bolt	Deadbolt: 1" Handle: 1/2" throw. Nickel plated
-------------	---

Door Handing	Reversible for right or left-hand doors
---------------------	---

ANSI/BHMA	A156.5 Grade 3
------------------	----------------

ADA	N/A
------------	-----

UL	N/A
-----------	-----

LEVERS

Door Prep	Cross Bore 2-1/8" Edge Bore 1" Latch Face 1" x 2-1/4"
Backset	Adjustable to 2-3/8" or 2-3/4" UL 2-3/4" standard 2-3/8" optional
Door Thickness	1-3/8" - 1-3/4" doors standard. 2-1/4" doors optional on GLC 101 and GLC 535 models
Cylinder	SmartKey or KW or WS 5 pin
Faceplate	1" x 2-1/4" Specify round corner, square corner or drive-in

Strikes	2-1/4" full lip Specify round corner or square corner Other options available
----------------	---

Bolt	1/2" throw nickel plated
-------------	--------------------------

ANSI/BHMA	A156.2 Grade 3
------------------	----------------

ADA	Functions GLC 101 and GLC 12 satisfy section 4.13.9 ADA requirement
------------	--

UL	Meets 20 minute fire rating for all UL functions
-----------	--

KNOBS

Door Prep	Cross Bore: 2-1/8" Edge Bore: 1" Latch Face: 1" x 2-1/4".
Backset	Adjustable to 2-3/8" or 2-3/4". UL 2-3/4" standard 2-3/8" optional.
Door Thickness	1-3/8" - 1-3/4" doors standard. 2-1/4" doors optional on GAC 101 and GAC 531 models only.
Cylinder	SmartKey or KW or WS 5 pin
Faceplate	1" x 2-1/4". Specify round corner, square corner or drive-in.

Strikes	2-1/4" full lip. Specify round corner or square corner. Other options available.
----------------	--

Bolt	1/2" throw nickel plated
-------------	--------------------------

Door Handing	Reversible for right- or left-hand doors.
---------------------	---

ANSI/BHMA	A156.2 Grade 3
------------------	----------------

ADA	N/A
------------	-----

UL	Meets 20 minute fire rating for all UL functions
-----------	--

DEADBOLTS

Door Prep	Crossbore 1-1/2" Edge Bore 1" Latch Face 1" x 2-1/4"
Backset	Adjustable to 2-3/8" or 2-3/4" UL 2-3/4" standard 2-3/8" optional
Door Thickness	1-3/8" - 1-3/4" Standard
Cylinder	SmartKey or KW or WS 5 pin
Faceplate	1" x 2-1/4" Specify round corner, square corner or drive-in

Strikes	Standard: 1-1/8" x 2-3/4" Specify round corner or square corner
----------------	--

Bolt	1" throw
-------------	----------

Door Handing	Reversible for right or left-hand doors
---------------------	---

ANSI/BHMA	A156.5 Grade 3
------------------	----------------

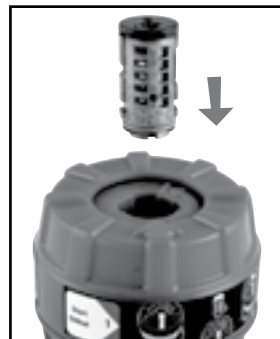
ADA	Interior turn piece meets 4.13.9 ADA requirements
------------	---

UL	Meets 20 minute fire rating for all UL functions
-----------	--

NOTE: Elements does not meet grade 3 when installed on a 2-1/8" crossbore



A Before you begin, rotate lower dial to the right till it stops to align arrow on upper grip with start point **1** on inner dial.



B Insert cylinder all the way into the inner dial.



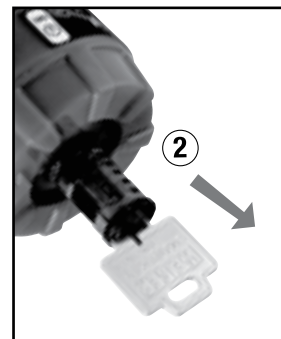
C Rotate lower dial half turn to the left till it stops, where the two arrows meet.



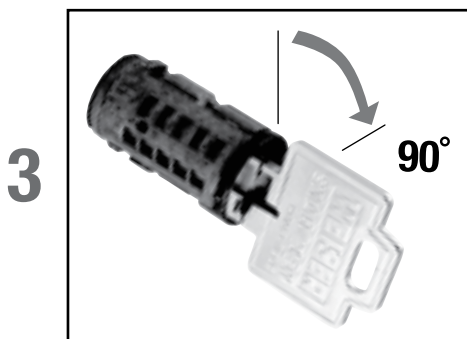
A Insert the SmartKey tool into the small hole (next to the keyway) on the cylinder face, and push with force till it goes all the way in, then remove the SmartKey tool.



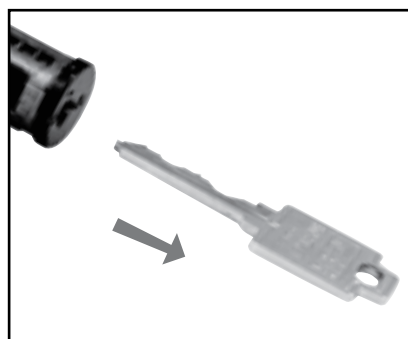
B Insert the key you want to learn in the plug, while being sure not to rotate the plug



C Remove the plug from the reset cradle by gently pulling on the key.



A While holding the cylinder body stationary, rotate the key back to the home position.



B Remove the key.



C Reinstall cylinder in product