

INSTALLATION INSTRUCTION

900 Series LED Quick Connect™ Socket Set

QP-LED903

WAC LIGHTING

Responsible Lighting®

OVERVIEW:

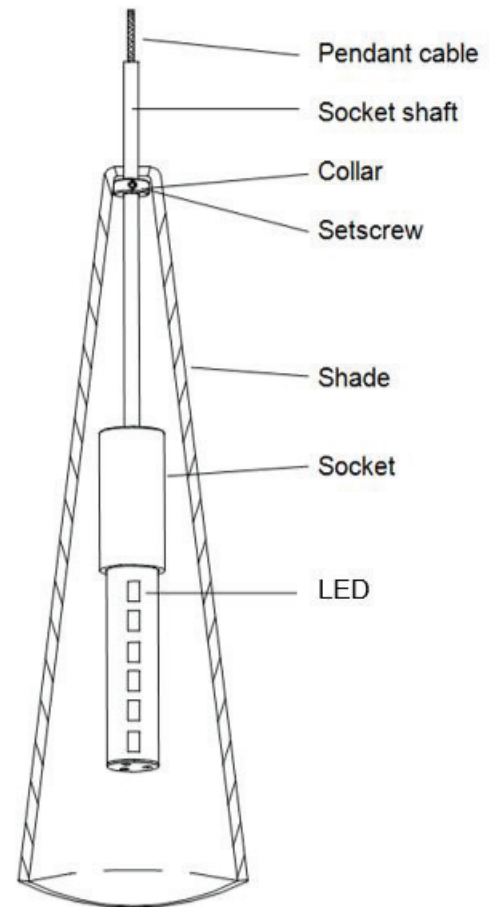
Pendant socket sets are designed for use with all WAC quick connect adapters. They may also be used on other manufacturers brand of quick connect (consult factory for compatibility). Pendants may be mounted to monorail, monopoints, line volt flexible track or standard line volt track, by coupling to a low voltage quick connect adapter. Sockets are supplied with a 6' cable and may be field cut to desired length.

INSTALLING LAMP & SHADE:

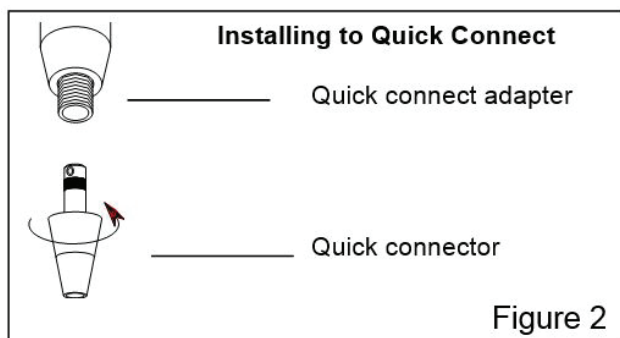
1. Remove the quick connector adapter (see page 2, to shorten pendant).
2. The small collar travels any where along the length of the socket shaft and is secured by a setscrew. This allows varying lamp positions inside the shade. Set the collar to a desired height. (figure 1)
3. Lower the shade until it rests on the finial.
4. Re-install the quick connect adapter. If shortening the pendant do this before re installing (see page 2, to shorten pendant).

INSTALLING PENDANT TO QUICK CONNECT:

5. Insert the post of the quick connect into the quick connect adapter. (figure 2)
6. Thread the top half of the conical section until it seats with the adapter.
7. Adjust fixture position, use caution not to loosen the conical section.



FIGTURE 1



See p.2 for field shortening pendants.

WAC Lighting
www.waclighting.com
Phone (800) 526.2588 • Fax (800) 526.2585

Headquarters/Eastern Distribution Center
44 Harbor Park Drive • Port Washington, NY 11050
Phone (516) 515.5000 • Fax (516) 515.5050

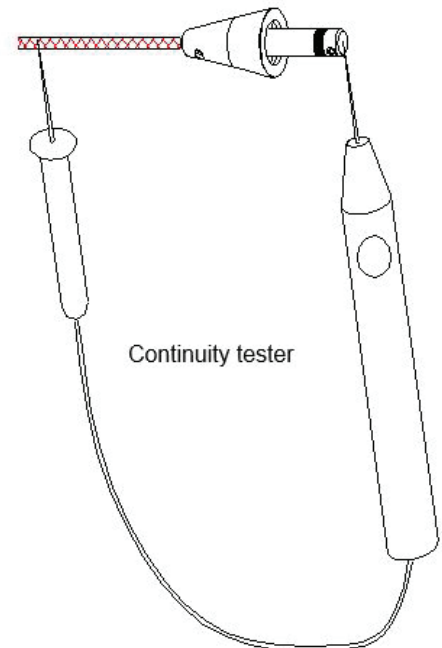
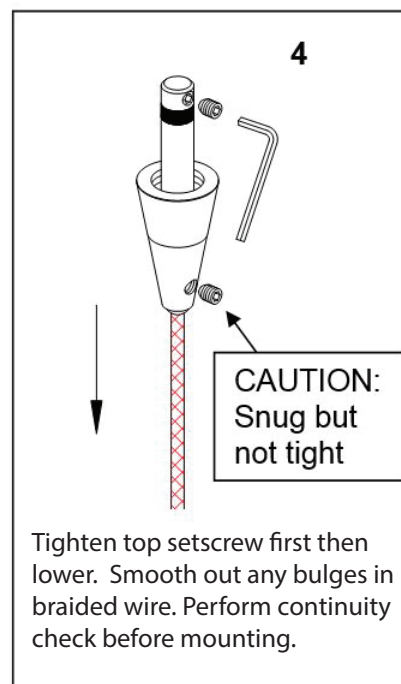
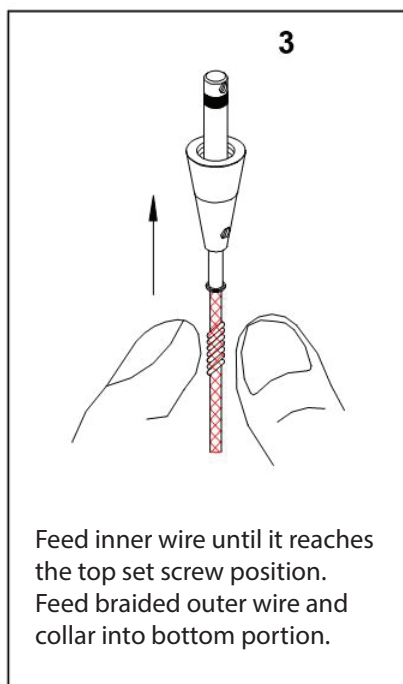
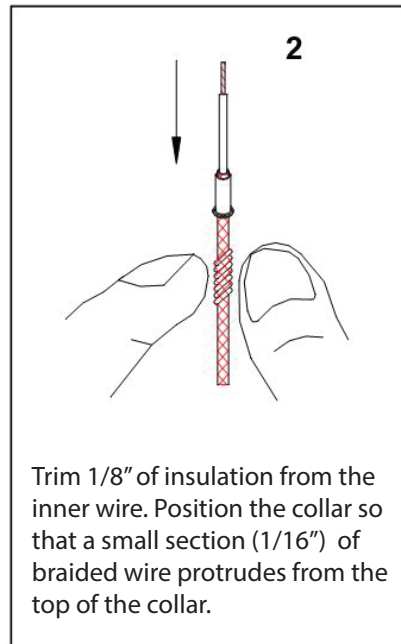
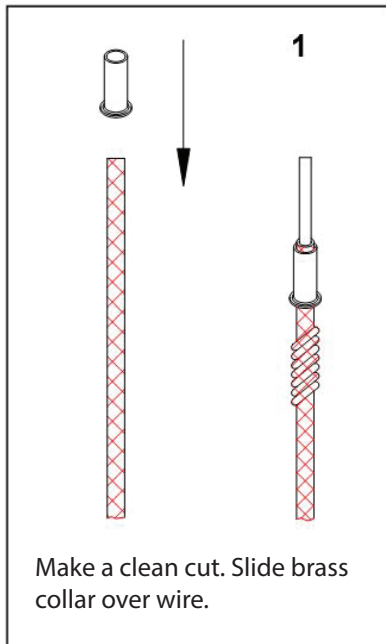
Western Distribution Center
1750 Archibald Ave • Ontario, CA 91761
Phone (800) 526.2588 • Fax (800) 526.2585

INSTALLATION INSTRUCTION
900 Series LED Quick Connect™ Socket Set
QP-LED903

WAC LIGHTING
Responsible Lighting®

TO INSTALL/ SHORTEN PENDANT:

Feed the cable end through the Top Conical section and the metal finial. If cable needs to be shortened, make the cut now. To install the top conical section, follow the step-by-step instructions bellow. **NOTE: PENDANT CABLES ARE CO-AXIAL, IF THE LOWER SCREW IN STEP 4 IS MADE TOO TIGHT, THE INNER AN OUTER WIRE WILL SHORT. A SHORT CIRCUIT WILL RENDER THE ENTIRE SYSTEM IN-OPERATIVE AND POSSIBLY DAMAGE THE TRANSFORMER. CHECK ALL PENDANT SPLICES FOR CONTINUITY BEFORE INSTALLING.**



CHECK SPLICE:

There should now be continuity, indicating a completed circuit.

Install with power off.

WAC Lighting
www.waclighting.com
Phone (800) 526.2588 • Fax (800) 526.2585

Headquarters/Eastern Distribution Center
44 Harbor Park Drive • Port Washington, NY 11050
Phone (516) 515.5000 • Fax (516) 515.5050

Western Distribution Center
1750 Archibald Ave • Ontario, CA 91761
Phone (800) 526.2588 • Fax (800) 526.2585