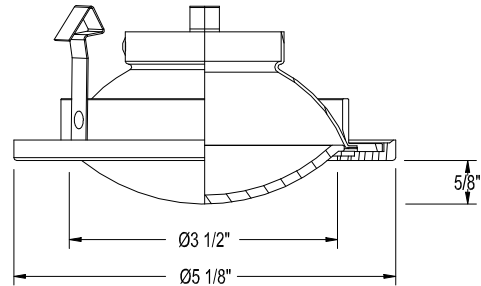


<b>CATALOG NUMBER</b>	<b>TYPE</b>
<b>PROJECT</b>	

**4" PREMIUM LOW VOLTAGE DOWNLIGHT TRIM**

**HR-D418**



**Ordering Matrix**

Series	Model Number	Finish
[ ]	[ ]	[ ]
HR	D418	CB WT

Ordering Example (series – model number – finish): HR-D418-WT

**Product Details**

**Description:** Wet location listed glass dome trim. Typical applications include bathrooms, saunas, workrooms and patios. For use with HR-8400 series low voltage downlights.

**Materials:** Durable die-cast aluminum construction. Tempered frosted glass dome lens with silicon gasket. Three heavy gauge retention clips firmly hold trim to housing.

**Aiming:** Center lamp holder holds the lamp completely at nadir, providing the full lamp output directed at the object(s) below the trim.

**Lamping:** Utilizes 12 volt MR16 lamps. Ordered Separately. 50w maximum for all housings.

**Finish:** Abrasion resistant powder coat painted finish. Trim is available in Copper Bonze (CB) or White (WT).

**Listing:** UL & CUL Listed. Suitable for wet and damp locations.

**Specification Features**

- Tool-less re-lamping and maintenance features to provide years of reliable operation.
- Small dome shower light provides a good amount of diffused downward lighting from a small aperture.
- Handles ceiling thickness up to 3/4".
- 5 year WAC Lighting product warranty.

**Compatible Housings (sold separately):**

<p><b>HR-8401E</b></p> <p>Non IC Remodeling 12 Volt Electronic <b>Lamp:</b> MR16 50W Max</p>		<p><b>HR-8401H &amp; HF</b></p> <p>Non IC Remodeling 12 volt Magnetic <b>Lamp:</b> MR16 50W Max</p>		<p><b>HR-8402E</b></p> <p>Non IC New Construction 12 Volt Electronic <b>Lamp:</b> MR16 50W Max</p>	
<p><b>HR-8402H &amp; HF</b></p> <p>Non IC New Construction 12 Volt Magnetic <b>Lamp:</b> MR16 50W Max</p>		<p><b>HR-8402HL &amp; HFL</b></p> <p>Non IC New Construction 12 Volt Magnetic <b>Lamp:</b> MR16 75W Max</p>		<p><b>HR-8403H &amp; HF</b></p> <p>IC Rated. Air tight ready. New Construction 12 Volt Magnetic <b>Lamp:</b> MR16 50W Max</p>	