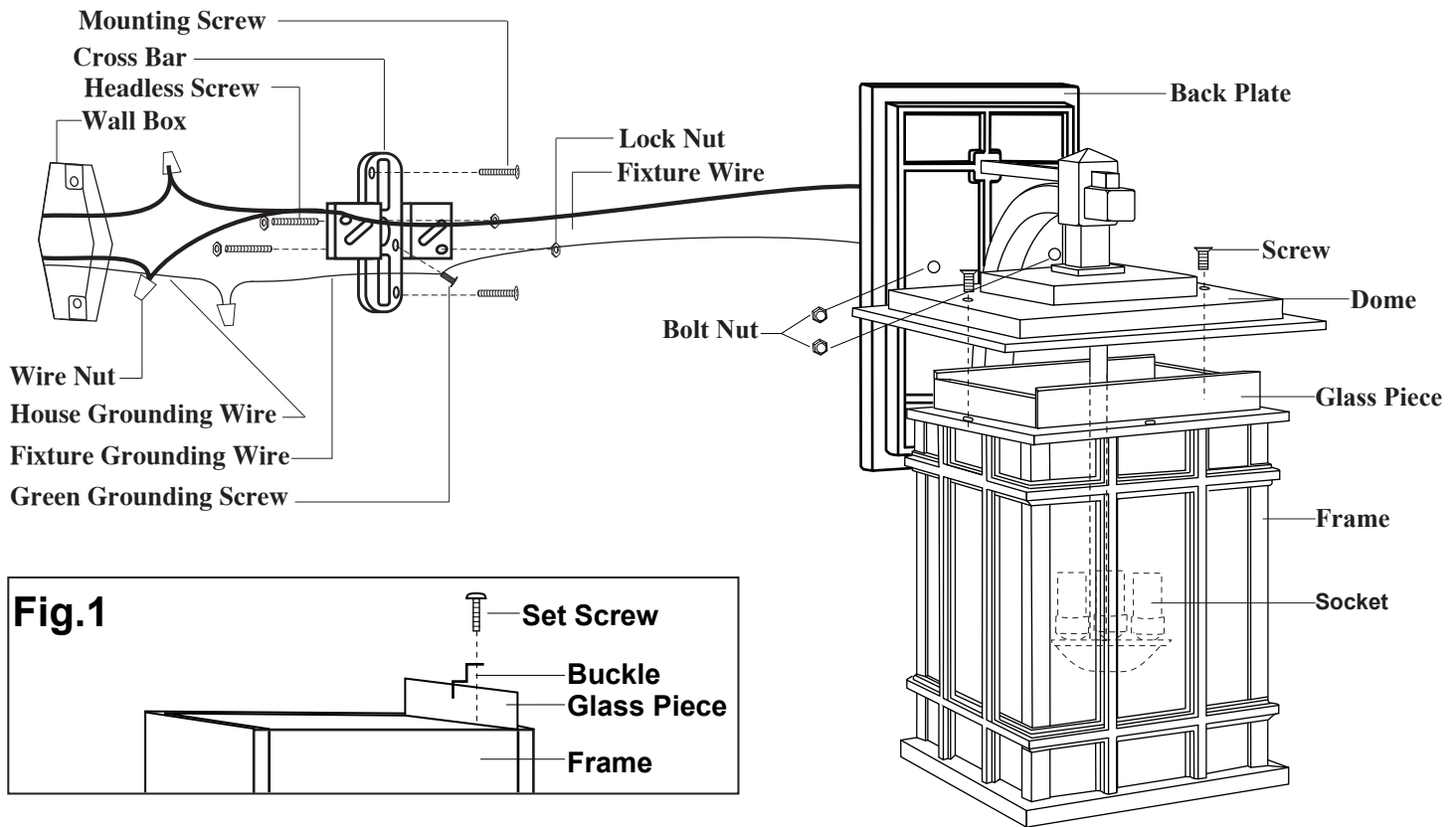


ASSEMBLY AND INSTALLATION INSTRUCTIONS

MH-OWD090

WARNING: TO AVOID RISK OF ELECTRIC SHOCK, BE SURE TO SHUT OFF POWER WHILE INSTALLING OR SERVICING THIS FIXTURE.

NOTE: Before installing, consult local electrical codes for wiring and grounding requirements.



1. Thread the two headless screws to the cross bar, and secure with four lock nuts. **(You can adjust the length of the headless screws if necessary.)**
2. Attach the cross bar to the wall box by using two mounting screws.
3. Make wire connections with wire nuts:
 - Connect the black wire from fixture to the black wire from power source.
 - Connect the white wire from fixture to the white wire from power source.
 - Attach the fixture grounding wire to the cross bar with the green grounding screw. Then connect it to the house grounding wire with the wire nut.Carefully tuck wires back into the wall box.
4. Attach the back plate to the wall box by inserting the headless screws, and then secure with two bolt nuts.
5. Put the glass pieces into the frame carefully. Then secure the buckles to fix the glass pieces by using four set screws. (See Fig.1)
6. Install three bulbs to the sockets. **(Please do not exceed the maximum capacity that is recommended on the package.)**
7. Attach the frame to the dome by using the two screws.
8. Turn on the power at fuse or circuit box.