

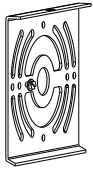
ASSEMBLY AND INSTALLATION INSTRUCTIONS

T0655

WARNING: Turn off the main power at circuit breaker before installing fixture.
AVERTISSEMENT: Coupez la source d'alimentation principale au panneau central de disjoncteurs avant d'installer le luminaire.

NOTE: 1. Before installing, consult local electrical codes for wiring and grounding requirements.
2. READ AND SAVE THESE INSTRUCTIONS.

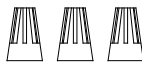
Hardware Package (included):



Mounting Plate Unit (A)



Mounting Screw (B)



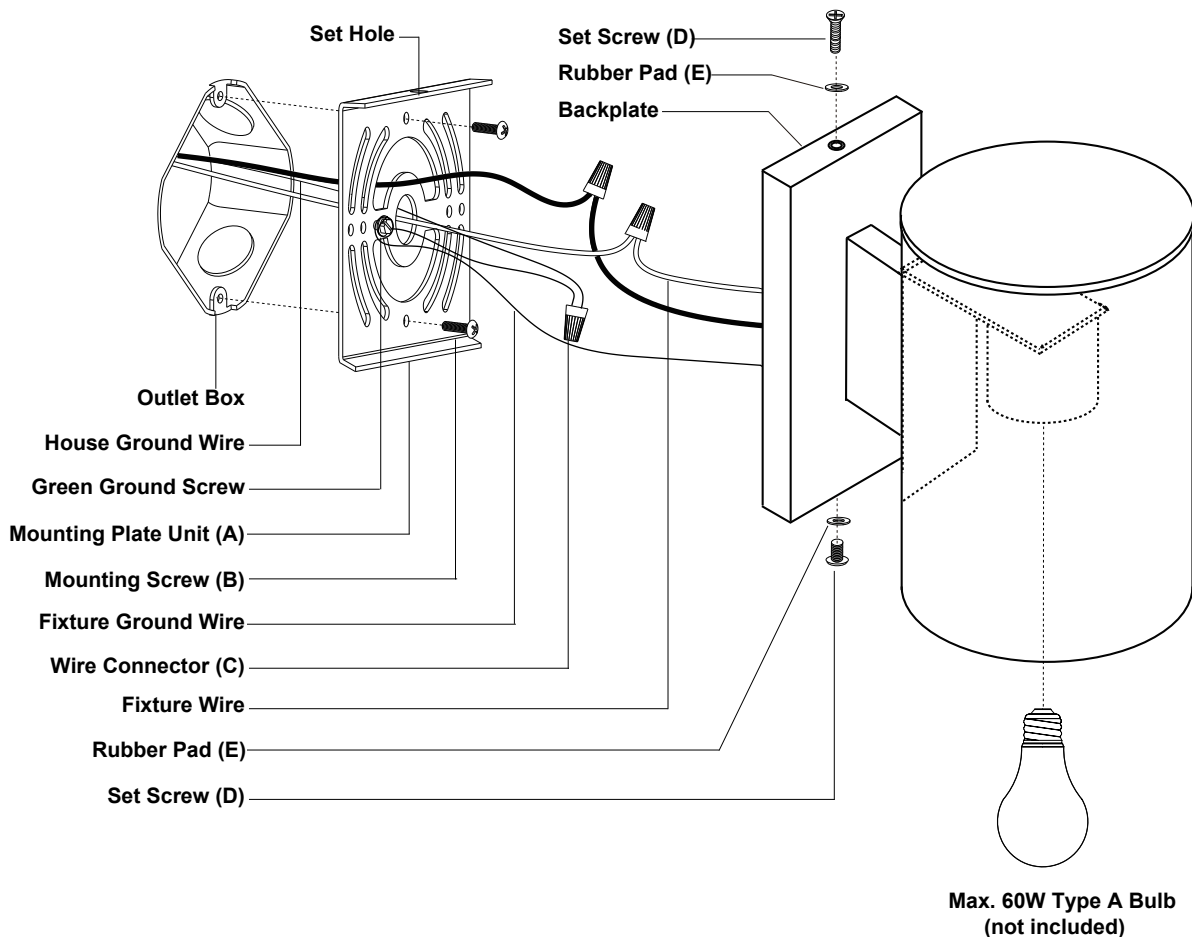
Wire Connector (C)



Set Screw (D)



Rubber Pad (E)



Installation Steps

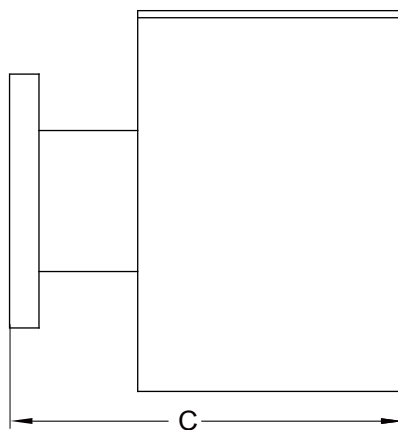
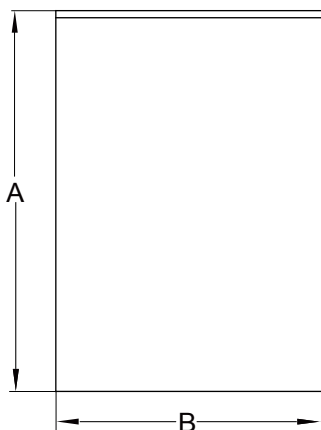
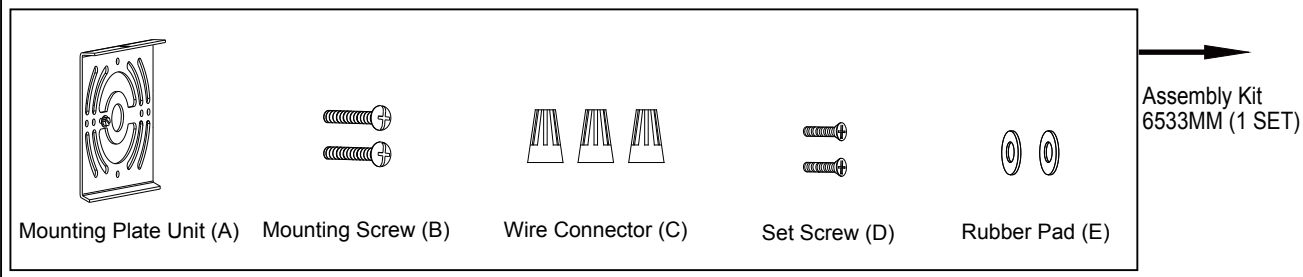
Turn off the power at fuse or circuit box.

1. Unscrew the two set screws (D), remove two rubber pads (E) and the mounting plate unit (A) from the backplate.
2. Attach the mounting plate unit (A) to the outlet box by using two mounting screws (B).
Note: Make sure that the two set holes are lined up vertically to make the fixture level.
3. Pull out the source wires from the outlet box. Make wire connections using wire connectors (C) as follows:
 - Connect the hot wires (usually black insulation) from the fixture to the black wire from the power source.
 - Connect the neutral wires (usually white insulation) from the fixture to the white wire from the power source.
 - Attach the fixture ground wire (usually green insulation or bare wire) to the mounting plate unit (A) with the green ground screw. Then, depending on local code, connect it to the house ground wire with the wire connector (C). Carefully put all of the wires back into the outlet box.
4. Attach the backplate of the fixture to the mounting plate unit (A) by aligning holes, secure the rubber pad (E) and set screw (D) from the top hole of the backplate into the open hole of the mounting plate unit (A). Then secure the rubber pad (E) and set screw (D) from the bottom hole of the backplate into the bottom side of the mounting plate unit (A).
Note: With silicone caulking compound, caulk completely around where the backplate meets with the wall surface to prevent water from seeping into the outlet box.
5. Install the bulb (not included). See relamping label at socket area or packaging for maximum wattage allowed.

Turn on the power at fuse or circuit box.

The following parts are available for re-order if damaged or missing.

Spare Parts List:



A: 7-1/4"

B: 5"

C: 8"