

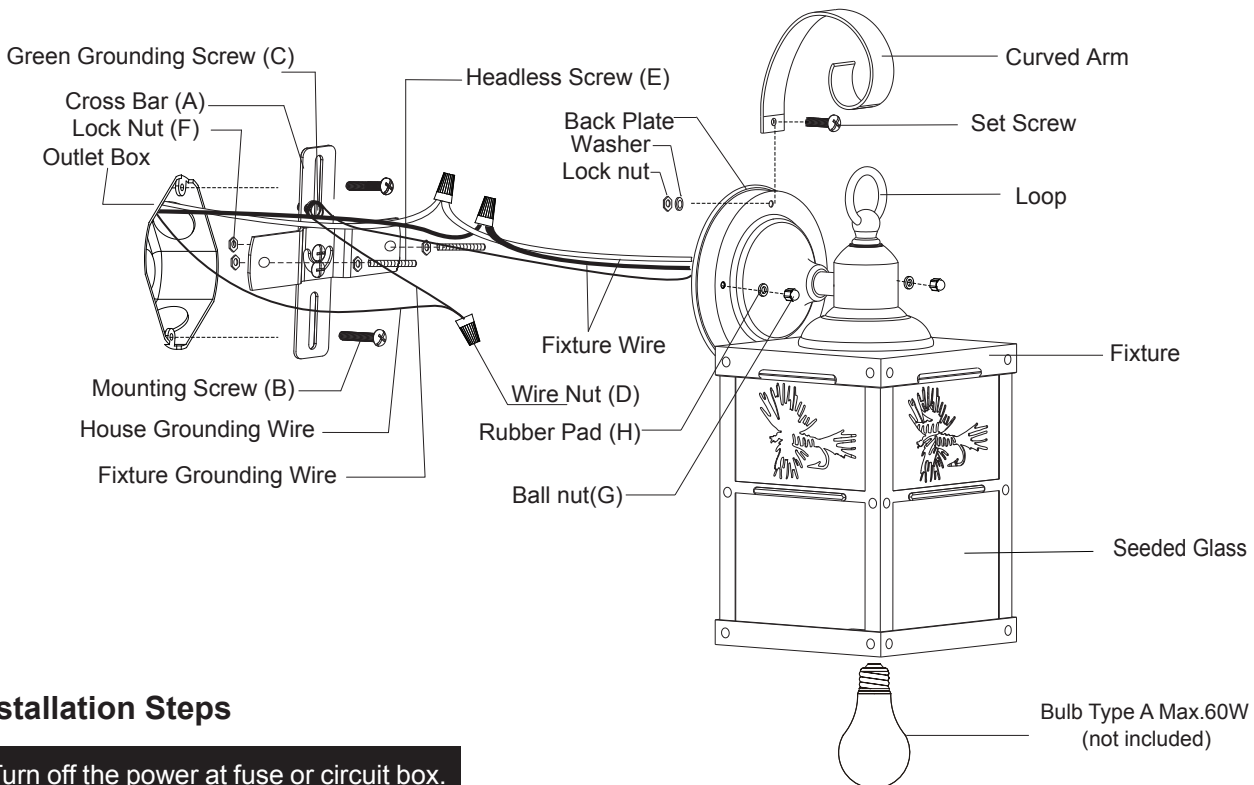
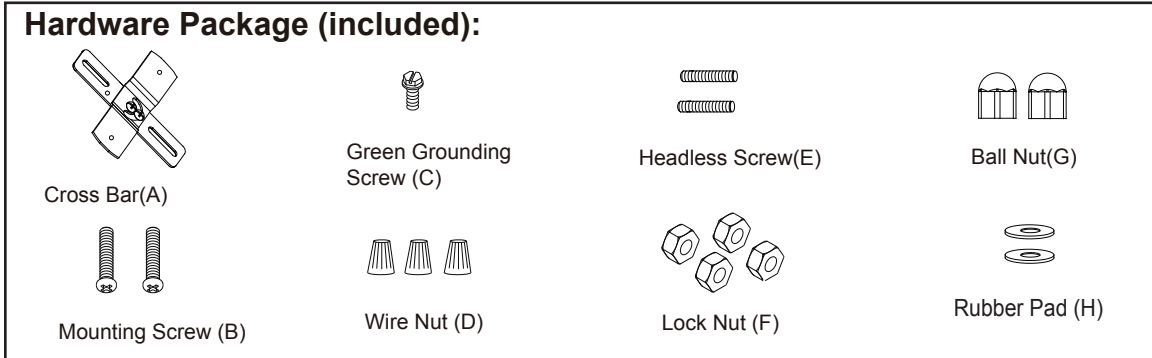
ASSEMBLY AND INSTALLATION INSTRUCTIONS

T0116

WARNING: TO AVOID RISK OF ELECTRICAL SHOCK, BE SURE TO SHUT OFF POWER WHILE INSTALLING OR SERVICING THIS FIXTURE.

NOTES: 1. Before installing, consult local electrical codes for wiring and grounding requirements.
2. READ AND SAVE THESE INSTRUCTIONS.

Hardware Package (included):



Installation Steps

Turn off the power at fuse or circuit box.

1. Thread two headless screws through the cross bar, then secure them with four lock nuts (two on each side of the cross bar). Adjust the length of the headless screws if necessary.
Note: Make sure that the headless screws are lined up horizontally, to ensure that the fixture will be level.
2. Attach the cross bar to the outlet box by using two mounting screws.
3. Hook the curved arm to the loop, and then attach the curved arm to the back plate by using the set screw, washer and the lock nut.
4. Pull out the source wires from the outlet box. Make wire connections using wire nuts as follow:
 - Connect the hot wire (usually black insulation) from the fixture to the black wire from the power source.
 - Connect the neutral wire (usually white insulation) from the fixture to the white wire from the power source.
 - Attach the fixture grounding wire (usually green insulation or bare wire) to the cross bar with the green grounding

screw. Then connect it to the house grounding wire with the wire nut.
Carefully put the wires back into the outlet box.

- Attach the back plate to the cross bar by inserting the headless screws, then secure it with rubber pads and two ball nuts.
CAUTION: With silicone caulking compound, caulk completely around where the back plate meets with the wall surface to prevent water from seeping into the outlet box.
- Install bulb (not included). See relamping label at socket area or packaging for maximum allowed wattage.

Turn on the power at the main fuse or circuit breaker box.

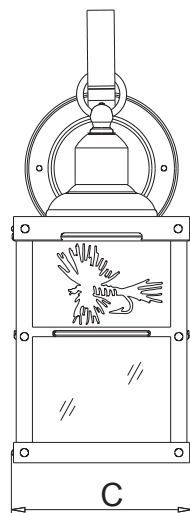
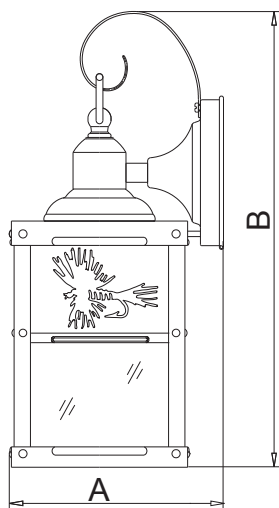
The following parts are available for re-order if damaged or missing.

Spare Parts List:

				→ Assembly Kit 5187MM (1 SET)
Cross Bar (A)	Green Grounding Screw (C)	Headless Screw (E)	Ball Nut (G)	
Mounting Screw (B)	Wire Nut (D)	Lock Nut (F)	Rubber Pad (H)	

				→ Assembly Kit 5188AA (1 SET)
Curved Arm	Lock Nut	Washer	Set Screw	

Seeded Glass
9651S (1SET)



A: 6"
B: 13"
C: 5"