

Accent Furniture



UTTERMOST

Mirrors • Art • Accessories • Botanicals • Clocks • Alternative Wall Décor • Accent Furniture

Accent Furniture Numerical Index

Item	Description	Page	Item	Description	Page	Item	Description	Page
05024	Teak Root, Large	414	23092	Anjali, Small Bench	382	24175	Etoile, Console Cabinet	428
07631	Tehama	416	23094	Raesa, Pet Bed	386	24181	Quatrefoil, Floor Screen	398
07638	Rashane	391	23095	Willa, Armchair	367	24182	Ikona, Console Table	397
08076	Andover	397	23098	Lauralee, Armless Chair	368	24183	Andover, Mirrored Cabinet	397
08081	Ikona	397	23099	Viera, Bench	376	24205	Sylvianne, Tall Hutch	410
08099	Almont	389	23100	Rumi, Armless Chair	360	24209	Lina, Accent Table	421
12631	Valonia	388	23102	Bresselle, Armless Chair	368	24214	Avarona, Accent Chest	435
12853	Aniya	399	23103	Lynna, Armchair	373	24228	Carmel, Lamp Table	441
13364	Avidan, Three Panel Screen	392	23105	Kervan, Pet Bed	387	24231	Corianne, Lamp Table	440
13814	Cesano Square	393	23106	Willa, Ottoman	367	24234	Almont, Console Table	389
20641	Keir, Plant Stands, S/3	405	23107	Willa, Armless Chair	367	24235	Sinley, Accent Table	402
23000	Nia, Corner Chair	357	23108	Marlena, Small Bench	382	24236	Eraman, Accent Table	402
23002	Nala, Armchair	359	23109	Corona, Bench	379	24239	Leontina, Small Bench	381
23003	Kimoni, Armchair	358	23110	Corona, Armchair	370	24240	Valli, Accent Table	405
23004	Derek, Armchair	362	23111	Raku, Bench	378	24241	Ascencion, Accent Table	428
23005	Wattley, Storage Ottoman	385	23112	Onika, Storage Bench	377	24242	Gadoni, Drawer Chest	427
23006	Amani, Armchair	361	23113	Kandy, Armchair	356	24244	Altair, Console Cabinet	411
23008	Brunner, Storage Ottoman	384	23114	Leisa, Armchair	374	24245	Cadey, Side Table	421
23019	Gideon, Storage Bench	385	23115	Detrick, Armchair	360	24247	Stratford, Rolling Box	412
23024	Brunner Small, Storage Ottoman	384	23116	Detrick, Ottoman	360	24248	Stratford, Etageres	412
23025	Lucky, Pet Bed	386	23117	Zyla, Armchair	363	24249	Spiro, Console	417
23026	Beau, Pet Bed	387	23118	Yvanna, Small Bench	383	24250	Stratford, Console	413
23027	Zebring, Bench	381	23600	Conlin, Armchair	359	24251	Stratford, Cocktail Table	413
23030	Clay, Armchair	362	23601	Bonheur, Armchair	369	24252	Stratford, End Table	413
23040	Lanessa, Ottoman	384	23602	Jonas, Armchair	366	24256	Rylance, Accent Table	435
23043	Aarika, Armchair	358	23603	Anesio, Armless Chair	372	24257	Grazia, Round Table	442
23047	Fontaine, Armchair	373	23604	Camdon, Armchair	364	24260	Coyne, Tray Table	422
23048	Channing, Armchair	363	23605	Chahna, Small Bench	380	24261	Cesano, Console Cabinet	393
23049	Trixie, Slipper Chair	372	23606	Bosley, Armless Chair	365	24263	Spiro, End Table	417
23050	Tola, Slipper Chair	372	23607	Gavriele, Armchair	364	24264	Spiro, Cocktail Table	417
23051	Zander, Wing Chair	370	23608	Ruca, Small Bench	380	24266	Tehama, Console	416
23052	Karline, Small Bench	378	23609	Swaun, Armchair	366	24268	Kumberlin, Round Table	420
23057	Fontaine Right, Armchair	373	23610	Fielding, Armchair	365	24274	Anais, Accent Table	403
23066	Keturah, Armchair	361	24003	Baina, Accent Table	402	24275	Aero, Accent Table	403
23073	Sandy, Wing Chair	371	24011	Bolzano, Console Cabinet	408	24276	Henzler, Coffee Table	395
23074	Sandy, Loveseat	371	24015	Ericson, Lamp Table	436	24277	Henzler, Etageres	394
23075	Karline, Bench	378	24040	Sascha, Console Table	441	24278	Henzler, Console Table	395
23076	Viera, Small Bench	376	24086	Jayne, Accent Table	439	24281	Gannon, Coffee Table	390
23077	Yalena, Desk Chair	375	24088	Eli, Game Table	445	24282	Gannon, End Table	390
23078	Cecily, Occasional Chair	375	24091	Matty, Mirrored Cube	400	24283	Hendrex, Lamp Table	400
23079	Anne, Occasional Chair	375	24111	Felicienne, Accent Table	429	24284	Cormac, Sofa Table	437
23080	Quintus, Armchair	374	24126	Brearly, Etageres	409	24285	Scout, Benches, S/2	424
23082	Beckham, Storage Bench	377	24127	Monteith, Lamp Table	439	24287	Ignado, Pedestal	428
23084	Bovary, Armchair	374	24140	Carmel, End Table	441	24288	Khoury, Accent Table	421
23085	Majandra, Small Bench	383	24142	Bergman, End Table	440	24289	Razi, Coffee Table	390
23086	Tehama, Small Bench	383	24149	Brakefield, Round Table	440	24290	Razi, Drawer Chest	391
23087	Tandy, Pet Bed	386	24157	St. Owen, End Table	439	24291	Huxley, Coffee Table	420
23088	Mariko, Armchair	357	24158	Phineas, Magazine Table	443	24292	Wren, Accent Table	426
23089	Aleara, Small Bench	380	24162	Gorham, Accent Table	443	24293	Senia, Accent Table	405
23091	Shea, Small Bench	382	24163	Breton, Accent Table	443	24294	Cashlin, Storage Coffee Table	419
			24168	Dice, Accent Table	444			

Accent Furniture Numerical Index

Item	Description	Page	Item	Description	Page
24295	Mardonio, Side Table	420	26111	Lyra, Accent Table.	429
24297	Frederique, Accent Table.	442	26115	Mindy, Console Table.	429
24298	Lexia, Desk.	401	26117	Lilah, Magazine Table.	404
24299	Lexia, Side Table	401	26118	Lilah, Etagere	404
24300	Lexia, Drawer Chest.	401	26120	Henzler, Lamp Table.	395
24301	Genessis, Accent Table	419	26122	Manoj, Small Bench	381
24302	Genessis, Console Table	418	26126	Generosa, Bench	423
24303	Bijan, Accent Table	406	26128	Generosa, Flower Cart.	422
24304	Carino, Coffee Table.	406	26129	Danicio, Coat Rack.	423
24305	Carino, Trunk Table.	406			
24306	Aniya, Console Table	399			
24307	Nicoline, Serving Cart	400			
24308	Martel, Console Cabinet	396			
24309	Abelardo, Console Cabinet	411			
24310	Brynmore, Round Table.	407			
24311	Kendellen, Accent Table	426			
24312	Hanford, Accent Table.	426			
25002	Riveter, Round Stool.	444			
25012	Freewheel, Coat Rack	444			
25500	Asher, Accent Table	425			
25504	Rishi, Three Drawer Chest.	430			
25508	Anya, Round Table	433			
25519	Driftwood, Cocktail Table	415			
25522	Lawton, Drum Table.	430			
25523	Asher Black, Accent Table.	425			
25524	Minorca, Accent Table.	445			
25526	Maguire, Console Cabinet	437			
25534	Gunnar, Small Bookshelf.	419			
25543	Francisco, Armchair	369			
25550	Antero, Console Table	408			
25561	Riyo, Hall Tree	432			
25564	Irina, Console Table	431			
25565	Kerridon, Coffee Table.	434			
25566	Kerridon, Lamp Table.	434			
25569	Quito, Accent Table	415			
25572	Finnian, Side Table	436			
25573	Ergo, Lamp Table.	436			
25574	Colter, Writing Desk.	431			
25576	Lachlan, Console Table	438			
25577	Lachlan, Coffee Table.	438			
25579	Talano, Lamp Table.	435			
25580	Bristan, Coffee Table	418			
25582	Teak Root, Console Table	414			
25583	Teak Root, Lamp Table.	415			
25584	Asher Blue, Accent Table.	425			
25585	Valent, Accent Table.	424			
25586	Valent Blue, Accent Table	424			
25587	Ronica, Accent Table	433			
25588	Takia, Accent Table.	446			
26011	Leilani, Accent Table.	403			
26104	Valonia, Console Table	388			



23113 Kandy, Armchair
29" x 44" x 34" Lush taupe velvet on a black stained, solid poplar frame
with antiqued brass accent nails. Teflon® brand stain resistant fabric. *Caroly Kuida*





23088 Mariko, Armchair
27" x 37" x 30" Brushed, light moss tailoring with nailhead over fabric trim and dark walnut hardwood legs. *Uttermost*

23000 Nia, Corner Chair
25" x 32" x 25" Sueded toffee covering with brass accent button, decorative stitching, and dark walnut wooden legs. *Uttermost*

23088



23000





23043

23043 Aarika, Armchair

38"x 41"x 36" Luxurious collage of golden brown and black animal print, coordinating chenille seat cushion, and striped lumbar accent pillow. Encased in breathable, cleanable, black faux leather with brass nail accents and medium walnut stained, hardwood legs.

23003 Kimoni, Armchair

31"x 43"x 34" Plush, golden brown and black animal print with black cording and side trim, nail head detail, and ebony wooden legs.



23003



23002 Nala, Armchair

32" x 38" x 35" Midnight black lounge chair has fabric with subtle swirl sculpting, nail head trim, and sunwashed pecan finished legs. *Uttermost*



23002

23600 Conlin, Armchair

31" x 39" x 33" Soft, rubbed black finish on solid, plantation grown mango wood with plush hazelnut seat and a supple, black polyurethane surround. *Uttermost*



23600





23115

23115 Detrick, Armchair
26" x 46" x 30" Hardwood frame tailored in sienna and black faux leathers with polished nickel accent nails and ebony stained legs. *Caroly Kuida*



23116

23116 Detrick, Ottoman
27" x 18" x 22" Hardwood frame tailored in sienna and black faux leathers with polished nickel accent nails and ebony stained legs. *Caroly Kuida*



23100

23100 Rumi, Armless Chair
25" x 45" x 29" Button tufted, black faux leather with rolled back and solid hardwood frame with weathered ebony finish, accented with polished nickel nail head detail and arrow foot metal cladding. *Caroly Kuida*





23006

23006 Amani, Armchair
30" x 37" x 33" Plush flaxen seating area with surrounding fabric coordinated in softly sculpted reptile. Double row nail head accents and legs in rich dark walnut.

23066 Keturah, Armchair
31" x 35" x 34" Hardwood frame and comfortable, loose box cushions tailored in a soft, dobbie chenille in neutral driftwood. Accented with oversized, brass nails and sun washed pecan, tapered block feet.



23066





23030

23030 Clay, Armchair
33" x 37" x 33" Velvety soft fabric that captures the look of natural tanned leather. Antiqued brass nail head details and weathered hickory stained legs and base. Pillow included. *Uttermost*

23004 Derek, Armchair
29" x 34" x 30" Plush, chestnut swirl fabric with saddle brown faux leather surround, double row nail head detail and rich walnut wooden legs. *Uttermost*



23004





23048

23048 Channing, Armchair

26" x 38" x 28" Plush animal print, self decked with removable cushion, accented by brass nails and framed in hand rubbed, weathered black finish. Constructed in solid, white mahogany with double doweled, reinforced joinery. *Carolyn Kunkin*

23117 Zyla, Armchair

29" x 49" x 33" Light taupe chenille channel back surrounded by animal stripes in coordinating neutrals, outlined in matte champagne accent nails. Solidly constructed in pine and select hardwoods with reinforced joinery and washed in a light tan, rubbed finish. *Carolyn Kunkin*



23117
Back



23117





23607



23604

23607 Gavriele, Armchair
26" x 35" x 31" Mocha gray, solid mango
wood frame with honey-stained undertones
and double layer caning. Antique velvet
cushions in silvered taupe. *W. Wilson*

23604 Camdon, Armchair
25" x 36" x 24" Carved in solid mango
wood and finished by hand in antique red
with black undertones with steel gray woven
seat cushion. *W. Wilson*





23610

23610 Fielding, Armchair

23" x 38" x 23" Ornately carved, solid mango wood in mocha gray heavily mottled with black and tea-stained undertones and cushioned in steel gray with antique brass nail accents.

23606 Bosley, Armless Chair

24" x 44" x 26" Hand carved, solid mango wood finished in mocha gray with honey undertones, paired with a collage of rich, earth toned fabrics and antique brass nail head detail.



23606





23609 Swaun, Armchair
30" x 38" x 30" Hand carved details in antique bone finished, solid mango wood with woven, Vienna chocolate tailoring and dark brass accent nails. *Uttermost*

23602 Jonas, Armchair
30" x 43" x 28" Solid, carved mango wood in antique bone finish with woven cover in Vienna chocolate and dark brass accent nails. *Uttermost*

23609



23602





23095, 23106

23095 Willa, Armchair

27" x 42" x 30" Pine and white mahogany frame with reinforced joinery, hand carved and hand finished in an ash gray wash over natural wood grain. Woven polyester in steel gray and tan with individually hammered nail accents. *Caroly Kuida*

23106 Willa, Ottoman

28" x 19" x 20" Solid, hand carved pine and hardwood with an ash gray wash and woven polyester covering in steel gray and tan with nail accents. *Caroly Kuida*

23107 Willa, Armless Chair

22" x 41" x 25" Pine and white mahogany frame with reinforced joinery, hand carved and hand finished in an ash gray wash over natural wood grain. Woven polyester in steel gray and tan with individually hammered nail accents. *Caroly Kuida*



23107





23098

23098 Lauralee, Armless Chair
20" x 40" x 24" Natural, solid birch wood with light glazing paired with antique parchment linen blended with cotton *Caroly Kuida*

23102 Bresselle, Armless Chair
20" x 40" x 24" Solid pine frame with a light tan wash to highlight wood grain and carvings, and soft, woven fabric reminiscent of script-printed burlap. *Caroly Kuida*



23102





23601

23601 Bonheur, Armchair

24" x 38" x 24" Solid mango wood, hand carved and finished in mocha gray with honey stained undertones and French script printed, antiqued parchment fabric with brass nail accents. *Uttermost*

25543 Francisco, Armchair

25" x 35" x 24" Craftsman built of solid mahogany, hand carved and hand finished in jet black rubbed through to show natural wood grain undertones. Neutral parchment seat cushion is cleanable polyester accented with brass nails. *Uttermost*



25543





23110



23051

23110 Corona, Armchair
24" x 44" x 25" Solid poplar, hand finished in weathered black with light tan linen and antiqued brass accent nails. *Caroly Kuder*

23051 Zander, Wing Chair
29" x 41" x 30" White mahogany, solid wood construction with doweled, reinforced joinery and hand applied, weathered black finish showing natural wood undertones. Tailored upholstery is light tan linen accented by solid brass nails. *Caroly Kuder*





23074 Sandy, Loveseat
53" x 42" x 32"

Shimmery, sandy white woven tailoring features Teflon® fabric protector and brass nail accents. Exposed wood frame is solid, white mahogany with reinforced joinery and hand applied, weathered black finish. *Cathy Keeler*

23073 Sandy, Wing Chair
29" x 41" x 30"





23050



23049



23603

23050 Tola, Slipper Chair

26" x 31" x 25" Hand carved, white mahogany frame with double doveled joinery and antiqued whitewash finish. Covering is natural linen blended with polyester. *Caroly Kiebler*

23049 Trixie, Slipper Chair

24" x 31" x 25" Velvety smooth, cream brushed fabric is button tufted and accented with a double row of steel nails. White mahogany frame is crafted with double doveled joinery and finished in antiqued black, mottled with natural wood undertones. *Caroly Kiebler*

23603 Anesio, Armless Chair

28" x 44" x 26" Solid, carved mango wood with antique bone finish and ivory woven cotton cover. *Caroly Kiebler*





23047



23057

23047 Fontaine, Armchair

40" x 31" x 26" Tailored seat is covered in parchment linen/cotton blend with Teflon® fabric protector. White mahogany, solid-wood frame finished in weathered black with natural wood undertones. *Caroly Kiefer*

23057 Fontaine Right, Armchair

40" x 31" x 26" Tailored seat is covered in parchment linen/cotton blend with Teflon® fabric protector. White mahogany, solid-wood frame finished in weathered black with natural wood undertones. *Caroly Kiefer*

23103 Lynna, Armchair

24" x 43" x 31" Channel tufted, ivory velvet accented by polished nickel nails. Frame is solidly constructed of white mahogany with light almond finish. *Caroly Kiefer*



23103





23080

23080 Quintus, Armchair
27" x 37" x 28" Almond stained, distressed solid white mahogany with antique toffee crackle finish and soft linen covering blended with cotton, trimmed in welt and Teflon® treated for soil resistance. *Carolyn Kuida*

23114 Leisa, Armchair
33" x 33" x 31" Soft linen and cotton slub weave in alabaster white, accented by rows of polished nickel nails and black stained, hardwood legs. *Carolyn Kuida*

23084 Bovary, Armchair
27" x 34" x 27" Tufted channels tailored in woven vanilla hue and accented by nickel nails. Solid, white mahogany exposed frame is finished in antiqued black crackle with walnut undertones. *Carolyn Kuida*



23114



23084



23114 Back Detail





23078

23078 Cecily, Occasional Chair
 24" x 40" x 25" Plush black velvet with antique brass nail accents on a solid, white mahogany frame with fluted carvings and a rich, black crackle finish. *Carolyn Krider*



23077

23077 Yalena, Desk Chair
 26" x 39" x 26" Solid, white mahogany wood in distressed black with dark espresso undertones, featuring adjustable height and swivel casters. Comfortable seating in woven antique white and black accented by nickel nail head detail. *Carolyn Krider*



23079

23079 Anne, Occasional Chair
 30" x 44" x 30" Graceful, curved arms and cabriole legs carved from solid, white mahogany finished in antiqued black crackle. Covering is 100% linen treated with Teflon® stain protection and accented by champagne nail head detail. *Carolyn Krider*





23076



23099

23076 Viera, Small Bench
24" x 20" x 16"

23099 Viera, Bench
42" x 21" x 18"

Shimmery, sandy white woven tailoring features Teflon® fabric protector, silver nail accents, and black crackled, wooden frame in solid white mahogany.

Carlye Kender





23082

23082 Beckham, Storage Bench

32" x 18" x 17" Sturdy, hardwood construction with lined interior, brass hinges with added safety hinge, and supple, black polyurethane covering accented by antique brass nails. Tapered wooden feet in dark ebony. *Caroly Kuida*

23112 Onika, Storage Bench

53" x 20" x 21" Supple, black faux leather with brass accent nails, safety hinges, and lined inner storage. *Caroly Kuida*



23112





23111

23111 Raku, Bench
54" x 21" x 19" Soft, heather white tweed seat cushion over a sun-washed, weathered hardwood frame with brass accent nails. *Caroly Kivder*

23052 Karlina, Small Bench
24" x 19" x 17" Hand carved, white mahogany frame with antiqued almond finish. Covering is natural linen accented with brass nails. *Caroly Kivder*



23052

23075 Karlina, Bench
42" x 20" x 18" Hand carved, white mahogany frame with antiqued almond finish. Covering is natural linen and cotton with Teflon® fabric protector accented with brass nails. *Caroly Kivder*



23075





23109 Corona, Bench
37"x 22"x 20" Solid poplar, hand finished in weathered black with welt-trimmed, light tan linen seat and rolled arms. *Carlye Kinder*





23605

23605 Chahna, Small Bench
22" x 19" x 18" Aqua blue finish on solid, plantation grown mango wood with cushioned seat in plush, dark chocolate and milky white velvet.



23608

23608 Ruca, Small Bench
22" x 19" x 18" Solid, plantation grown mango wood in soft, rubbed black with tufted seat in plush, river stone beige.

23089 Aleara, Small Bench
24" x 19" x 16" Weathered, wrought iron scrolled bench with soft cushioned top in cream and olive linen-cotton blend.



23089





23027



24239

23027 Zebring, Bench

61" x 21" x 20" Plush stripes in sea glass blue, sand, and cocoa brown buttoned and tufted on solid wood framework with a deep, cognac stained finish. *William*

24239 Leontina, Small Bench

24" x 17" x 16" Hand forged, fluted metal frame with warm beige wash and cocoa glaze. Cushioned seat cover is crocodile embossed, buff faux leather. *Gene Ferguson*

26122 Manoj, Small Bench

24" x 17" x 16" Dark, coffee brown metal work with mahogany undertones and a padded seat covered in distressed, saddle brown fabric.



26122





23092

23092 Anjali, Small Bench
24" x 16" x 19" Ornate, forged metal in dark rusted bronze finish with cushioned seat in light buff polyurethane. *Gene Ferguson*



23091

23091 Shea, Small Bench
24" x 16" x 21" Curvy frame in satin nickel with a light champagne wash, topped with a padded seat in plush ivory. *Gene Ferguson*

23108 Marlana, Small Bench
24" x 21" x 16" Brushed bisque, plush seat cushion inset to an antique gold, forged metal frame. *Gene Ferguson*



23108





23118

23118 Yvanna, Small Bench
24" x 19" x 16" Forged metal in heavily oxidized silver finish with cushioned seat in soft, sandy linen. *Gene Ferguson*

23086 Tehama, Small Bench
25" x 17" x 19" Weathered, sanded and lightly burnished, natural fir wood with a light dusty wash and cushioned seat in ivory linen-weave texture. *Gene Ferguson*

23085 Majandra, Small Bench
25" x 19" x 17" Cushioned, embossed seat in sueded, henna brown with shimmering, metallic undertones. Graceful, cabriole legs are wide grained, natural fir wood. *Carolyne Kieder*



23086



23085





23008



23024



23040

23008 Brunner, Storage Ottoman
37" x 21" x 37" Rugged, saddle brown faux leather cover, decorative stitching with nail head accents, lift off top with walnut stained hardwood, and casters for easy movement. *Alisa*

23024 Brunner Small, Storage Ottoman
23" x 20" x 23" Rugged, saddle brown faux leather cover, decorative stitching with nail head accents, lift off top with walnut stained hardwood and casters for easy movement. *Alisa*

23040 Lanessa, Ottoman
18" x 21" x 18" Tailored handwork flaunting rows of brass nails, button accents, and silken rope trim. Plush covering is satiny taupe reptile chenille with antiqued velvet cushioned top. Rich, walnut stained hardwood feet. *Alisa*





23019 Gideon, Storage Bench
54" x 21" x 28" The casual, time worn feel of natural tanned leather in velvety smooth fabric with a tufted, lift off top and dark walnut stained legs. *M. Wilson*

23019

23005 Wattle, Storage Ottoman
31" x 19" x 31" Rugged sable brown with decorative stitching, nail head detail, removable top, and wooden legs finished in weathered hickory. *M. Wilson*



23005





23094

23094 Raesa, Pet Bed

27" x 15" x 27" White mahogany with other hardwoods elegantly carved and finished in weathered, ash gray with sun washed undertones. Reversible cushion is woven polyester in light granite. *Carlye Kiefer*

23087 Tandy, Pet Bed

28" x 13" x 22" Antiqued, medium walnut hardwood frame with plush, quilted sage polyester covering and tufted cushion. *Walt*

23025 Lucky, Pet Bed

35" x 16" x 32" Durable, faux leather pet sofa features a plush, russet brown cushion that is tufted and reversible and buckles to the hardwood frame. *Walt*



23087



23025





23026

23026 Beau, Pet Bed

50" x 17" x 32" Cleanable and breathable, saddle brown faux leather with brass nails detailing an exposed hardwood frame. Plush tan, reversible foam cushion buckles into place and removes for cleaning. *Uttermost*

23105 Kervan, Pet Bed

37" x 16" x 24" Walnut stained zebra wood accents and metallic bronze dog figure head on a carved bed, with pillow-soft cushion in breathable, cleanable, saddle brown polyurethane. *Uttermost*



23105





12631



26104

12631 Valonia
42"x 59"x 2" Combination of heavily antiqued gold leaf
and distressed chestnut brown with black speckling. *Gene Ferguson*

26104 Valonia, Console Table
60"x 37"x 14" Combination of heavily antiqued gold leaf and distressed
chestnut brown with black speckling and antiqued mirror top. *Gene Ferguson*



08099 Almont
34" x 50" x 3"

24234 Almont, Console Table
48" x 32" x 18"



08099



24234

Distressed, rust bronze finish with silver champagne undertones and antiqued, beveled mirror inlays. *Uttermost*





24281 Gannon, Coffee Table
36" x 22" x 23" Forged iron frame in antiqued silver leaf
with clear, tempered glass top and mirrored gallery shelf. *Alison*



24282 Gannon, End Table
23" x 24" x 19" Forged iron frame in antiqued silver leaf
with clear, tempered glass top and mirrored gallery shelf. *Alison*

24289 Razi, Coffee Table
47" x 19" x 28" Industrial silver metal with champagne
stain accented with individually hammered rivets. *Cathy Kuder*





07638 Rashane
45" x 65" x 4" Lightly stained, silver champagne aluminum with decorative nail head trim. *Caroly Kuida*

24290 Razi, Drawer Chest
54" x 36" x 17" Supple, black faux leather finish accented by industrial silver metal sheeting with champagne stain and rivet accents. *Caroly Kuida*





13364 Avidan, 3 Panel Screen
62" x 80" x 3" Heavily antiqued gold with antique mirrors. *Gene Ferguson*





13814

24261

13814 Cesano, Square
34" x 34" x 2" Brushed, heavily
antiqued, rustic bronze finish. *Cathy Kinke*

24261 Cesano, Console Cabinet
36" x 36" x 18" Brushed, rustic bronze metal
clad cabinet with double doors, interior shelf,
and clear glass top. *Cathy Kinke*





24277

24277 Henzler, Etagere
34" x 62" x 14"

24278 Henzler, Console Table
45" x 33" x 14"

26120 Henzler, Lamp Table
26" x 26" x 18"

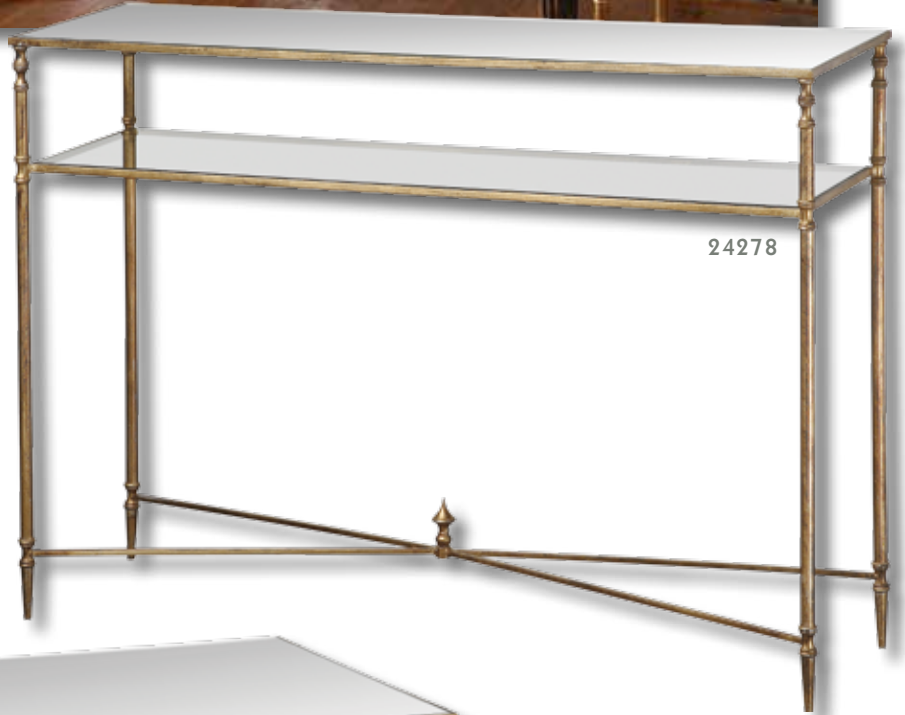
24276 Henzler, Coffee Table
38" x 19" x 28"

Gold leaf with heavy antiquing on iron frame with iron cross stretchers.
Table tops are reinforced mirror, and gallery shelves are clear, tempered glass.

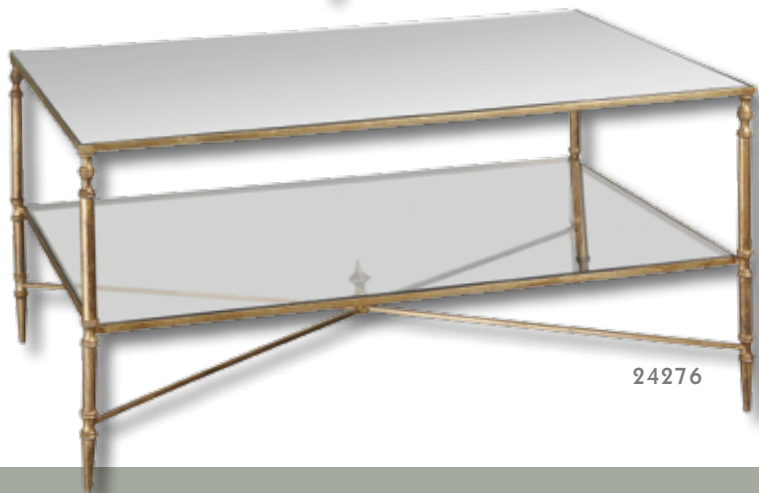




26120



24278



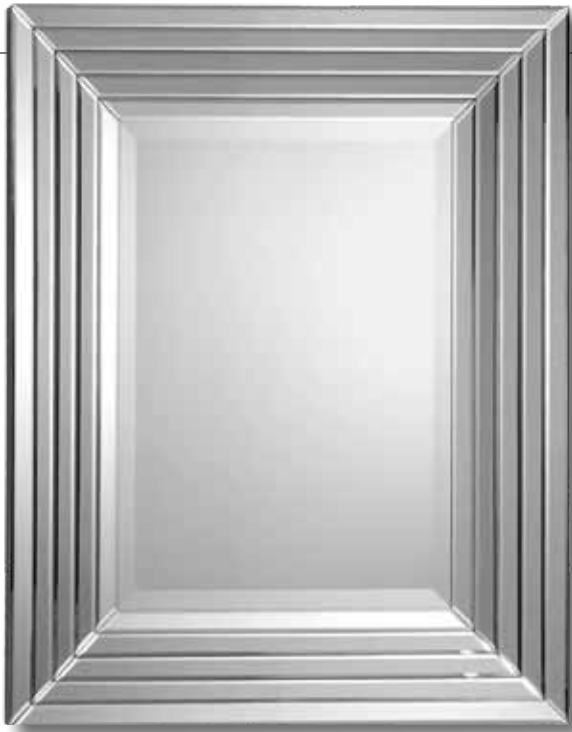
24276





24308 Martel, Console Cabinet
42" x 38" x 14" Sturdy case wrapped in the soft sheen of aluminum clad
with black interior, one fixed shelf, and clean, metal bar door pulls.





08081



08076



24182



24183

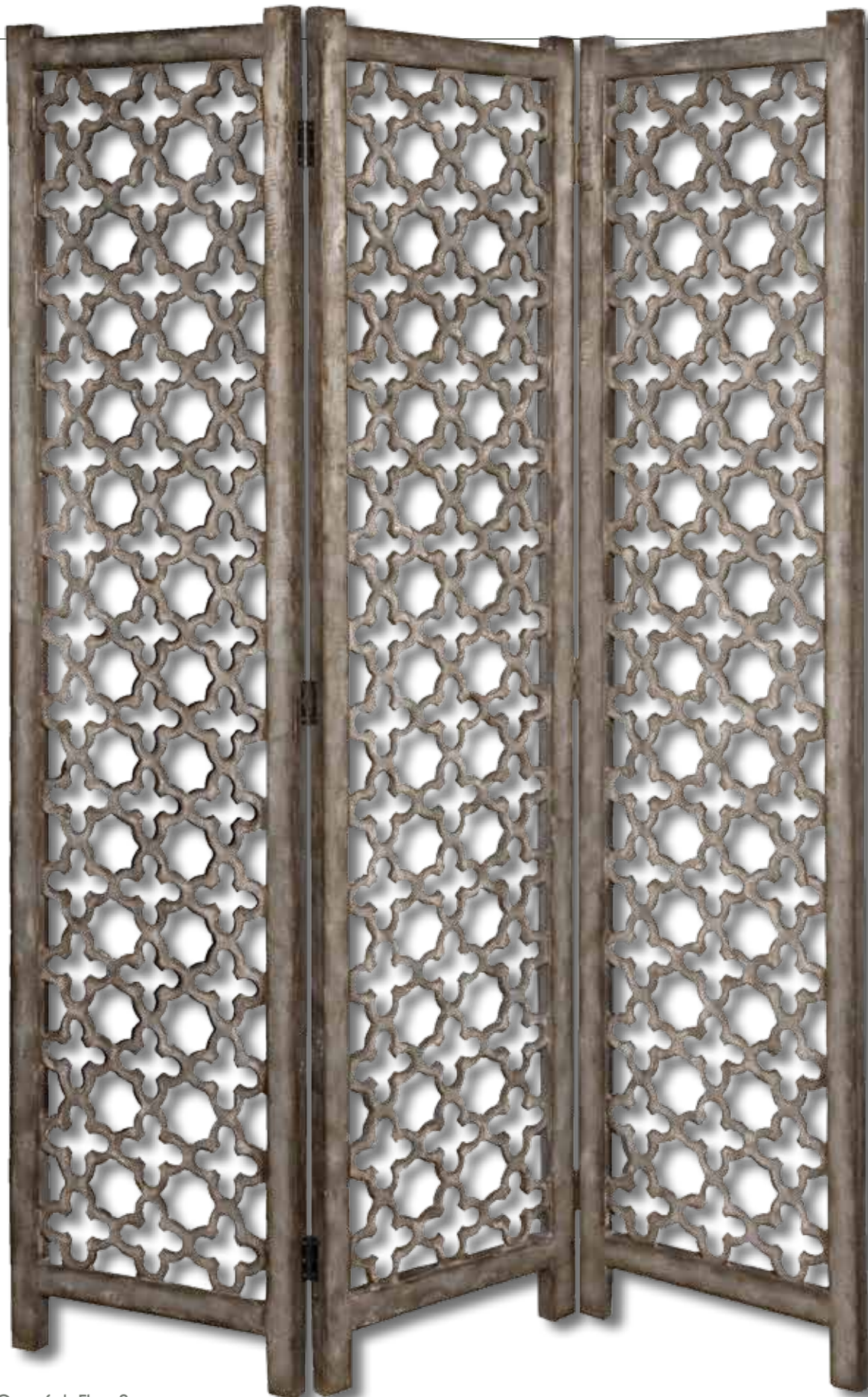
08081 Ikona
32" x 40" x 2" Stair-stepped bevel mirrors. *Caroly Kuida*

24182 Ikona, Console Table
48" x 37" x 16" Beveled mirror facets on curved apron, top, and legs. *Caroly Kuida*

08076 Andover
32" x 36" x 2" Filigree of pale butterscotch antiqued mirror with layered, center beveled mirrors. *Caroly Kuida*

24183 Andover, Mirrored Cabinet
42" x 38" x 14" Filigree of pale butterscotch antiquing over mirror facets with chrome door pulls set into plain mirror back plates. Black interior has an adjustable shelf. *Caroly Kuida*



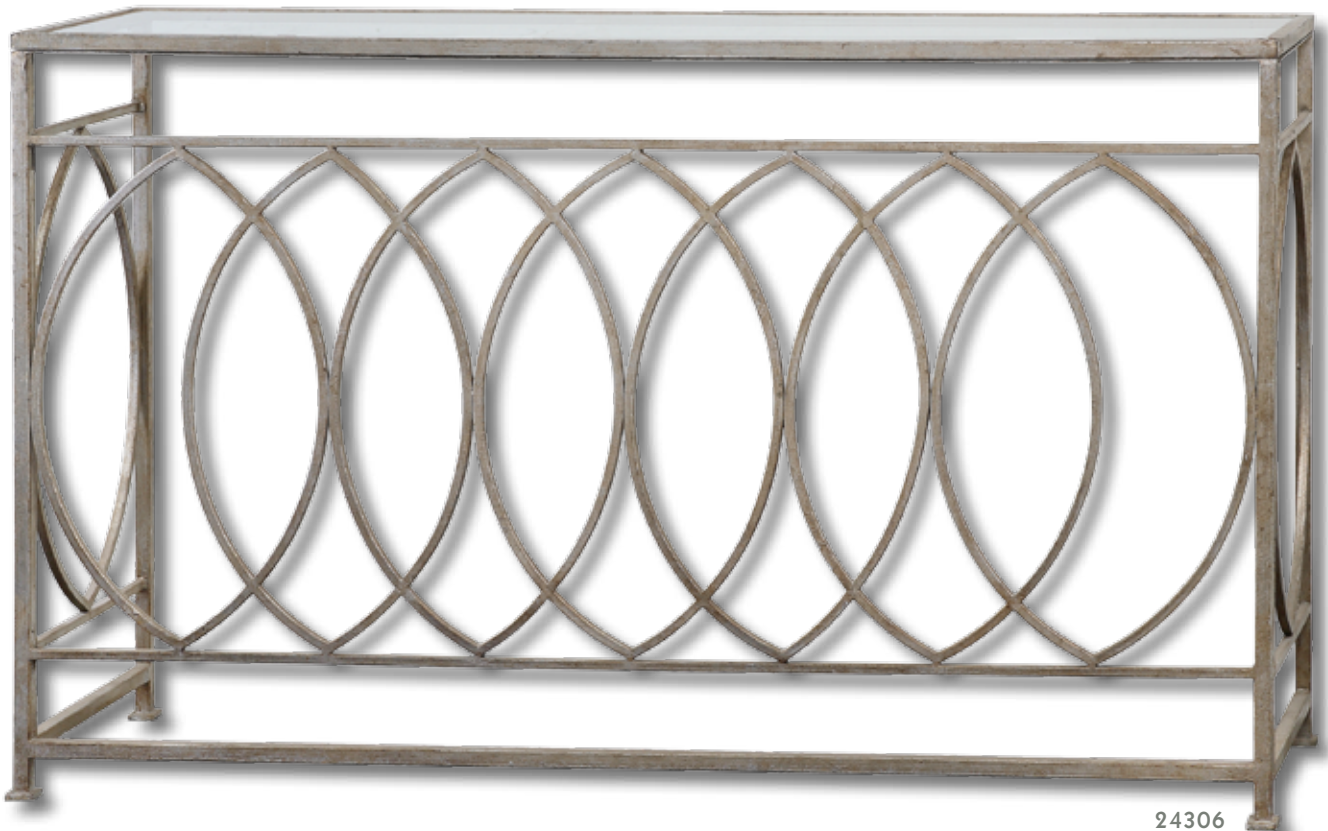


24181 Quatrefoil, Floor Screen
55" x 73" Burnished aluminum with darkened gray
undertones and two-way hinges.





12853



24306

12853 Aniya
51" x 40" Antiqued silver leaf iron. *John Johnson*

24306 Aniya, Console Table
60" x 37" x 16" Antiqued silver leaf iron with
clear glass top. *John Johnson*





24307 Nicoline, Serving Cart
34" x 32" x 16" Forged iron with brass patina
and clear, tempered glass. Stemware hanger
and rolling casters. *Gene Zepher*

24091 Matty, Mirrored Cube
16" x 18" x 16" Aged black with red undertones,
faceted with antiqued mirrors. *William*

24283 Hendrex, Lamp Table
27" x 30" x 27" Coffee bronze, forged iron
framework with floating, tempered glass top
and inset mirror gallery shelf. *William*



24283



24091





24299

24299 Lexia, Side Table
20" x 26" x 20" Bronze mirror faceted on all sides with a stainless steel base. *Caroly Kuida*



24300

24300 Lexia, Drawer Chest
26" x 26" x 18" Bronze mirror facets accented by chrome ball feet and drawer pulls over white mirror plates on two drawers that are sized and equipped for file storage. *Caroly Kuida*

24298 Lexia, Desk
52" x 30" x 24" Bronze mirror-faceted desk with generous, wide drawer accented by a chrome bar pull over a beveled, white mirror plate fixed atop a stainless steel stretcher base. *Caroly Kuida*



24298





24003

24003 Baina, Accent Table
24" x 30" x 24" Burnished silver finish with champagne highlights and antiqued mirror top and base. *M. Uttermost*

24236 Eraman, Accent Table
25" x 27" x 25" Antiqued, rustic gold inset with beveled, antiqued mirrors on table top, pedestal, and legs. *M. Uttermost*

24235 Sinley, Accent Table
28" x 28" x 28" Distressed, ebony stained wood inset with beveled, antiqued mirrors. *M. Uttermost*



24236



24235





24275



24274



26011

24275 Aero, Accent Table
20" x 20" x 20" Artistically forged iron with antiqued gold leaf, and tempered glass top encircled by an antiqued mirror accent. *[Signature]*

24274 Anais, Accent Table
19" x 28" x 19" Coffee bronze, forged iron base with antiqued mirror inset top. *[Signature]*

26011 Leilani, Accent Table
23" x 23" x 23" Antique gold mottled with tarnished brown distressing and a gray glaze with clear glass top and shelf. *[Signature]*





26118



26117

26118 Lilah, Etagere
20" x 66" x 20"

26117 Lilah, Magazine Table
18" x 26" x 14"

Lightly burnished silver leaf with
subtle champagne patina.

Gene Trapp





24240

24240 Valli, Accent Table
26" x 27" x 15" Ebony stained box tray affixed to a gracefully arched, champagne steel stand. *Gene Ferguson*

24293 Senia, Accent Table
19" x 27" x 19" Sleek combination of gloss black and chrome with a fixed glass top. *Chad*

20641 Keir, Plant Stands, S/3
S-11" x 29" x 11", M-12" x 35" x 12",
L-14" x 41" x 14" Matte black finish.



24293



20641





24303

24303 Bijan, Accent Table
25" x 28" x 20" Forged, black iron base with natural, planked fir wood top. *Carlye Kieker*

24304 Carino, Coffee Table
44" x 21" x 28" Black satin finish on knotty, deep-grained fir wood, with copper brown metal corner plates and drawer hardware. *Carlye Kieker*

24305 Carino, Trunk Table
41" x 30" x 17" Generous storage inside black satin, solid fir wood with natural knots and deep grains, and copper brown metal accents. Non-latching top with safety hinges. *Carlye Kieker*



24304



24305





24310 Brynmore, Round Table
42" x 31" x 42" Elegant, satin black finish
with subtle pine wood grain. *Cathy Kincaid*





25550 Antero, Console Table
54"x 30"x 12" Javanese mango wood stained dark, satin espresso.
Impeccably constructed dovetail drawers are accented with antiqued,
solid brass hardware. *Uttermost*

25550

24011 Bolzano, Console Cabinet
34"x 37"x 18" Distressed, aged mahogany red with black undertones
and tarnished silver hardware with antiqued mirrors. *Uttermost*



24011





24126 Brearly, Etagere
40" x 78" x 15" Stately framework of poplar solids
with sapele veneer in rich, dark bourbon finish. *Uttermost*



24205 Sylvianne, Tall Hutch

47" x 83" x 15" Solidly constructed of select hardwoods with three adjustable shelves and one fixed shelf with two drawers.

Soft, beige washed exterior is hand carved in classic detail and interior is tongue and groove birch in natural, sealed finish. *Uttermost*





24309

24309 Abelardo, Console Cabinet
 42" x 38" x 14" Lightly stained, rustic solid
 fir wood with wrought iron metal details and
 one interior shelf. *Gene Ferguson*

24244 Altair, Console Cabinet
 42" x 32" x 10" Weathered, reclaimed fir
 wood, sun faded and glazed with a stony
 gray wash. Solid wood construction with
 adjustable shelf. *Alison*



24244





24248

24248 Stratford, Etagere
 39" x 79" x 18" Naturally weathered, reclaimed fir wood with a light gray glaze. *Uttermost*

24247 Stratford, Rolling Box
 24" x 16" x 12" Weathered, reclaimed fir wood sanded and sealed with a light gray wash on black, metal swivel casters. *Uttermost*

24247





24252



24251




24250

24252 Stratford, End Table
26"x 27"x 26"

24251 Stratford, Cocktail Table
60"x 19"x 40"

24250 Stratford, Console
71"x 30"x 18"

Solidly constructed of salvaged fir lumber and hand turned balusters. Sun faded, distressed patina is finished with a stony gray wash. 





05024

05024 Teak Root, Large
50"Rd x 4" Lightly stained natural teak roots. Due to the natural material used each piece will vary. *Uttermost*

25582 Teak Root, Console Table
54"x 34"x 18" Natural, unfinished teak wood sculpted into sturdy table pedestals with a clear glass top. *Uttermost*



25582





25583



25519



25569

25583 Teak Root, Lamp Table
24" x 26" x 24" Lightly stained natural teak roots. Due to the natural material used each piece will vary. *Uttermost*

25519 Driftwood, Cocktail Table
36" x 20" x 36" Natural, unfinished teak driftwood sculpted into a sturdy table with a clear glass top. *Uttermost*

25569 Quito, Accent Table
32" x 29" x 28" Natural, solid teak wood.
Indoor/Outdoor use. *Uttermost*





07631

24266

07631 Tehama, Small
36" x 47" x 2" Light walnut stained wood with burnished details and an aged black metal inner lip. *Gene Ferguson*

24266 Tehema, Console
55" x 32" x 18" Weathered, sanded and lightly burnished natural fir wood with aged black metal accents and a light, dusty wash. *Gene Ferguson*



24249 Spiro, Console
52" x 30" x 18"

24264 Spiro, Cocktail Table
56" x 17" x 30"

24263 Spiro, End Table
20" x 22" x 20"



24249



24264



24263

Solid, reclaimed fir wood hand finished in brushed black with natural wood undertones. Tops are salvaged fir lumber, sun faded and left natural with only a light gray glaze.



25580

25580 Bristan, Coffee Table
36" x 20" x 36" Constructed entirely of solid, carved golden mango wood with light, driftwood stain and subtle antique glazing.

24302 Genesis, Console Table
54" x 33" x 14" Solid, reclaimed fir wood in natural, sun bleached finish with light antiquing glaze.



24302





24294



24301

24294 Cashlin, Storage Coffee Table
33" x 20" x 33" Pine boards with soft
black saw mark antiquing and limestone wash
on hardwood bun feet. Each side lifts for
generous storage, with corners finished in
verdigris bronze metal plates.

24301 Genesis, Accent Table
25" x 29" x 25" Solid, reclaimed fir
wood in natural, sun bleached finish
with light antiquing glaze.

25534 Gunnar, Small Bookshelf
18" x 63" x 18" Acacia wood with
natural, golden teak oil finish.



25534





24295

24295 Mardonio, Side Table
20" x 25" x 12" Solid fir wood with saw mark distressing and a rustic, waxed limestone finish. *William*



24268

24268 Kumberlin, Round Table
22" x 26" x 22" Solid, natural fir wood weathered and sanded smooth with aged black metal banding. *James Ferguson*

24291 Huxley, Coffee Table
42" x 19" x 30" Antique crackled, solid fir wood frame with inset, tempered glass top and weathered iron base. *William*



24291





24209



24288



24245

24209 Lina, Accent Table
23" x 27" x 23" Darkened bronze metal with top made of hand finished, fir wood planks with a natural gray wash. *Carlye Kuida*

24288 Khoury, Accent Table
24" x 28" x 24" Stylized lion's paw pedestal in rubbed pewter with top and base in mottled ivory marble tones. *Carlye Kuida*

24245 Cadey, Side Table
22" x 26" x 22" Distressed and weathered, reclaimed fir wood with dusty charcoal finish and whitewash glaze. *Carlye Kuida*





24260 Coyne, Tray Table
30" x 33" x 16" Folding iron base and tray handles in distressed verdigris bronze with two trays and tabletop made of solid, weathered fir wood. *Carly Kiska*

24260



26128 Generosa, Flower Cart
52" x 37" x 27" Forged iron wheel base and handle with traces of turquoise broken away to weathered black undertones and an antiqued white, wooden cart box.

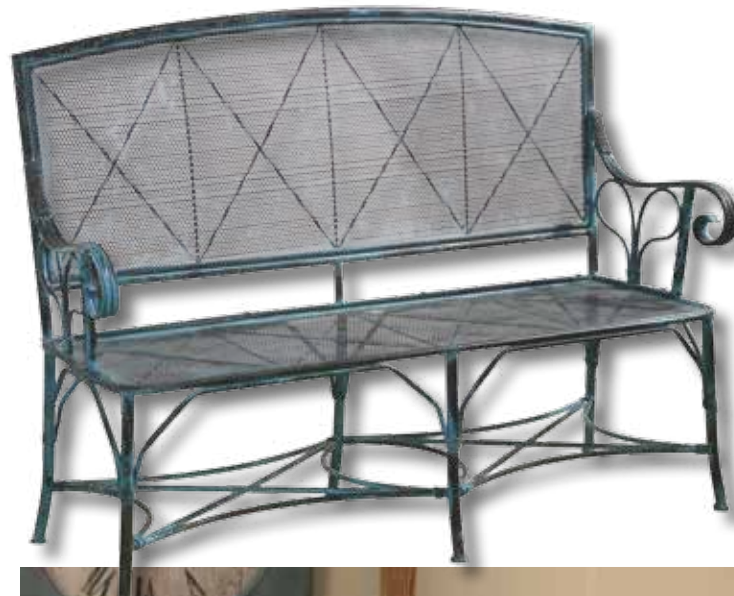
26128





26129

26129 Danicio, Coat Rack
17" x 77" x 16" Antiqued red crackle on iron, scrolled hangers and umbrella stand, with easy pull-out tray for emptying collected water.



26126

26126 Generosa, Bench
57" x 47" x 21" Sturdy, forged iron bench in turquoise crackle with oxidized black undertones.





24285

24285 Scout, Benches, S/2

S- 18" x 20" x 9", L- 26" x 22" x 13" Rustic, sage paint rubbed through to show antiqued undertones of solid fir wood.

25585 Valent, Accent Table

15" x 26" x 15" Petite, carved mango wood with mindi veneer, hand finished in raspberry with rubbed through distressing.

25586 Valent Blue, Accent Table

15" x 26" x 15" Petite, carved mango wood with mindi veneer, hand finished in robin's egg blue with rubbed through distressing.



25585

25586





25523

25523 Asher Black, Accent Table
 11" x 32" x 32" Solid, plantation grown mango wood hand painted black with heavy distressing rubbed through to natural wood grain. *(Signature)*



25584

25584 Asher Blue, Accent Table
 11" x 32" x 32" Solid mango wood, hand finished in sea glass blue with honey-stained undertones. *(Signature)*

25500 Asher, Accent Table
 11" x 32" x 32" Plantation grown mango wood, hand painted dark red over black and rubbed through to natural wood grain. *(Signature)*



25000





24311



24312



24292

24311 Kendellen, Accent Table

23" x 28" x 16" Hand-turned hardwood with woven cane shelves in natural, weathered finish with burnished edges and light antiquing glaze. *Carolya Kinder*

24312 Hanford, Accent Table

22" x 27" x 16" Sun-washed, weathered pine with burnished edges and light antiquing glaze. *Carolya Kinder*

24292 Wren, Accent Table

21" x 27" x 21" Wrought iron frame, hand finished in garden white with heavily oxidized patina. Top is inset with solid, unpolished white marble. *M. J. ...*



24242 Gadoni, Drawer Chest
47" x 34" x 18" Opulent carvings and generous
storage in heavily distressed, spring moss green
with auburn undertones. *Carly Kuida*





24241



24287



24175

24241 Ascencion, Accent Table

24" x 32" x 17" Enclosed storage case features textured cloth stretched over embossed wood with copper metallic highlights and a rust brown wash accented by Jacobean stained, distressed hardwood legs.

24287 Ignado, Pedestal

10" x 36" x 10" Varied tones of gold metal patina with a tan wash and black tipping. Recessed plant basin under removable flat surface. *Carlye Kinder*

24175 Etoile, Console Cabinet

39" x 35" x 18" Painted black finish with rub through distressing. Curved doors are rust brown with cloth texture and raised relief. One fixed shelf.





24111



26111



26115

24111 Felicie, Accent Table
25" x 24" x 25" Warm, chestnut brown burl veneer with a distressed, hand forged metal base in deep wood tones and a clear glass shelf. *Gene Ferguson*

26111 Lyra, Accent Table
26" x 28" x 26" Scrolled metal in ancient bronze finished with studded, faux leather top. *Alison*

26115 Mindy, Console Table
43" x 33" x 19" Heavily antiqued gold leaf with red undertones and burnished edges. *Gene Ferguson*





25504

25504 Rishi, Three Drawer Chest
36" x 31" x 19" Plantation grown mango wood with sungkai veneer in distressed honey finish with carved drawer accents hand painted in antiqued black. *W. Williams*

25522 Lawton, Drum Table
19" x 25" x 19" Solid, plantation grown mango wood finished by hand in dark cinnamon with black rubbed edges. Hinged door with two adjustable shelves. *W. Williams*



25522





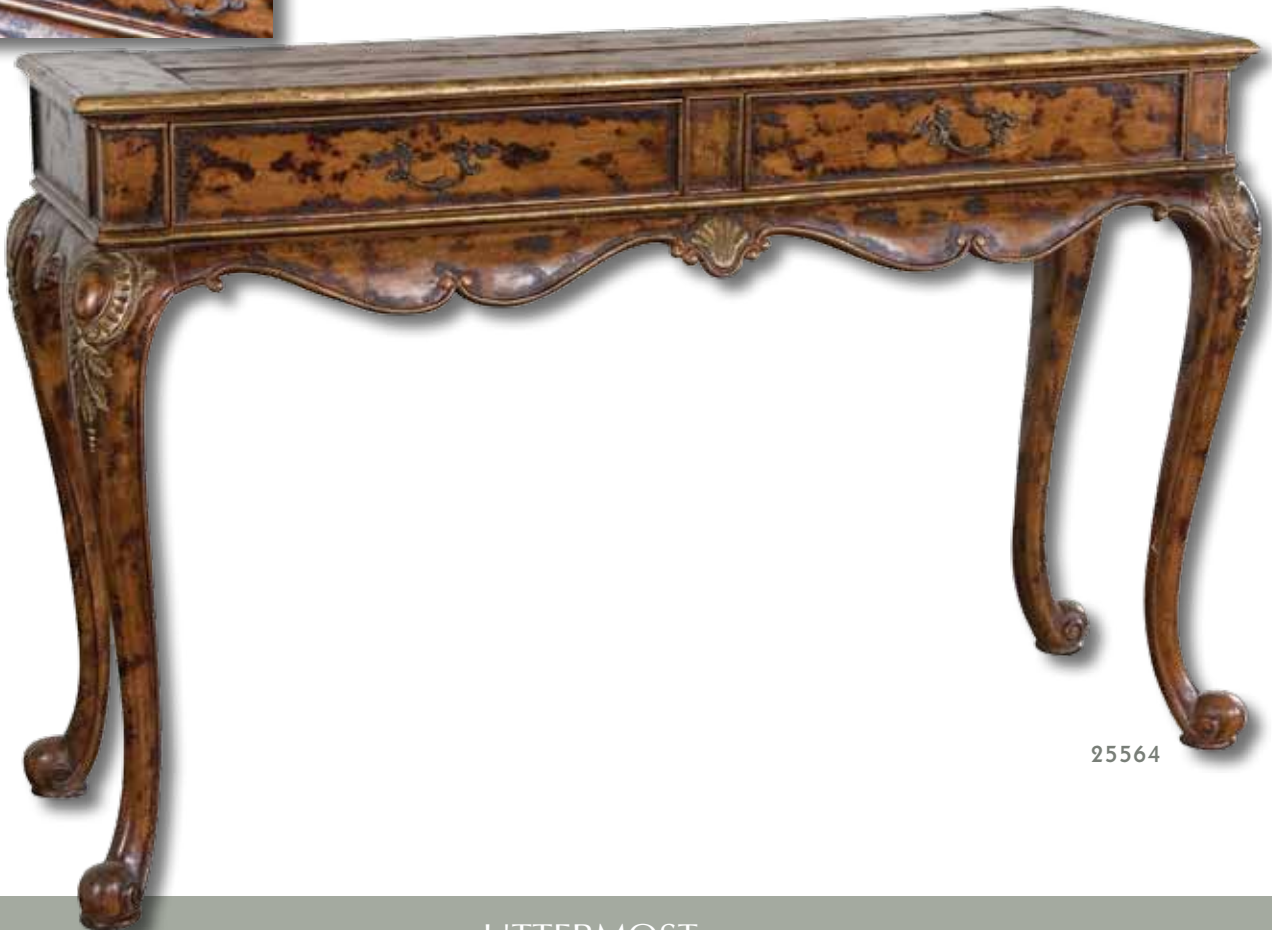
25574 Colter, Writing Desk

56" x 30" x 24" Solid, distressed mango wood with hand rubbed honey stain and dark burnishing to accent turned legs, carved details, and weathered top. Three dovetail drawers with antiqued, solid brass hardware. *Uttermost*

25574

25564 Irina, Console Table

52" x 34" x 18" Plantation grown mango wood with mindi wood veneer. Finished in hand rubbed cinnamon with heavy antiquing, gold leaf, carved accents, and two dovetail drawers. *Uttermost*



25564





25561 Riyo, Hall Tree
44" x 74" x 18" Honey stained, solid mango wood with hand painted, distressed charcoal gray accents, aged brass coat hooks, and antiqued mirror. Seat lifts with safety hinge for storage.



25587 Ronica, Accent Table
27" x 29" x 27" Solid mango wood and
mindi veneers, honey stained and hand painted
in distressed charcoal gray.

25508 Anya, Round Table
32" x 28" x 32" Plantation grown mango
wood hand painted charcoal gray and rubbed
through to natural wood grain.



25587



25508





25565



25566

25565 Kerridon, Coffee Table
40" x 20" x 26"

25566 Kerridon, Lamp Table
24" x 26" x 24"

Hand painted in ash gray with a walnut antiquing glaze to highlight the wood grain undertones from rubbed through distressing.





24214

24214 Avarona, Accent Chest
 19" x 26" x 19" Almond stained, distressed birch veneer with antiqued, ivory crackle paint finish. Dovetail drawers are accented by old iron finished metal pulls. *Carolyn Kuida*



24256

24256 Rylance, Accent Table
 18" x 25" x 18" Almond stained, distressed birch veneer and solid wood with antiqued toffee crackle paint. *Carolyn Kuida*

25579 Talano, Lamp Table
 26" x 26" x 26" Plantation grown mango wood, hand carved and hand painted in distressed cocoa gray. Subtle artwork on top is broken away to honey stained, natural wood undertones. *William*



25579





25572



25573



25572 Finnian, Side Table
 26" x 31" x 11" Turned legs and stretcher in solid mango wood with carved drawer moldings and hand distressed details on dovetail construction. Finish is rubbed mahogany with antiqued gold accents. Hardware is solid brass. *Uttermost*

25573 Ergo, Lamp Table
 26" x 28" x 26" Dark, mahogany stained solid mango wood with a touch of gold around the carved apron and shelf with a clear glass top. *Uttermost*

24015 Ericson, Lamp Table
 28" x 30" x 28" Richly antiqued, sun-washed pecan finish over inlay of zebra wood, cedar burl, and cherry. *Uttermost*

24015





24284

24284 Cormac, Sofa Table
40" x 30" x 18" Reeded, hardwood legs
and feet with brass casters and cherry veneer
tabletop. Finished in classic dark cherry stain
with hand rubbed antiquing. *[Signature]*

25526 Maguire, Console Cabinet
35" x 36" x 9" Made from plantation grown
mango wood, hand painted in warm oatmeal
with heavy distressing. Two adjustable shelves. *[Signature]*



25526





25576

25576 Lachlan, Console Table
52"x 34"x 20"

25577 Lachlan, Coffee Table
42"x 20"x 36"

Distressed, solid mango wood with rustic, hand rubbed
mahogany finish and dovetail drawers.



25577





24157



24127



24086

24157 St. Owen, End Table
19" x 25" x 17" Sun washed natural wood in time worn shades of wheat and russet with a French dovetail drawer and antiqued mirrors on top, sides and back. *Uttermost*

24127 Monteith, Lamp Table
28" x 29" x 28" Dark rubbed aubergine finish on solid poplar with antiqued mirror display surfaces. *Uttermost*

24086 Jayne, Accent Chest
38" x 31" x 20" Deep espresso with antiqued mirror drawers and side panels accented by carved moldings and polished nickel drawer pulls. *Uttermost*





24231



24149



24142

24231 Corianne, Lamp Table
32" x 28" x 24" Expert inlay of cedar burl, cherry, primavera, and mahogany veneers on carved, solid bass wood with glowing, hand rubbed pecan finish. *W. Uttermost*

24149 Brakefield, Round Table
32" x 30" x 32" Polished pecan finish over solid, carved hardwood base with top inlayed in cherry, primavera, zebra wood, and cedar burl veneers. *W. Uttermost*

24142 Bergman, End Table
30" x 29" x 30" Sleek legs carved from solid poplar with book matched, cherry veneer top in warm, antique pecan finish. *W. Uttermost*





24040

24040 Sascha, Console Table
48" x 33" x 19" English burl walnut with dark distressing on the turned legs, curved apron, and sculpted edges. Forged metal stretcher is antiqued pewter with a gold accent band.

24228 Carmel, Lamp Table
22" x 27" x 22" Casual styling in warm, old barn finish with distressed primavera veneer.



24228

24140 Carmel, End Table
22" x 28" x 15" Casual styling in warm, old barn finish with three dovetail drawers, pewter finished knobs and distressed primavera veneer.



24140





24297

24297 Frederique, Accent Table

20" x 25" x 20" Carved hardwood solids in antiqued black, broken away to glowing, walnut-stained primavera veneer with dovetail drawer and brass hardware. *William*

24257 Grazia, Round Table

24" x 26" x 24" Classic, hardwood construction finished in antiqued black crackle with rich, walnut undertones. *Cathy Kuder*



24257





24163

24163 Breton, Accent Table
 24" x 27" x 24" Heavily aged oak and mahogany veneers showing traces of distressed black paint with an ash gray wash to detail the hand carved pedestal. *Uttermost*



24158

24158 Phineas, Magazine Table
 24" x 31" x 16" Painted slate black with red undertones and rub through distressing. Table has four vertical slots for books, French dovetail drawer, carved finials, and antiqued casters. *Uttermost*



24162

24162 Gorham, Accent Table
 24" x 26" x 24" Detailed, hand painted embellishments in ivory over slate black with undertones of mahogany and black walnut veneer. *Uttermost*





25012

25012 Freewheel, Coat Rack
12"x 69"x 12" Antiqued, silvery black, vintage bicycle metal crafted into a freestanding holder for hats, coats and umbrellas.

24168 Dice, Accent Table
19"x 19"x 19" Burnt red with antiqued ivory accents and walnut wood undertones. Finished on all sides. *Uttermost*

25002 Riveter, Round Stool
17"x 29"x 17" Natural iron pipe fitted with antique, old wood seat.




24168




25002



24088 Eli, Game Table

26"x 29"x 26" Rich, honey toned zebra wood with hand painted, reversible game board which offers checkers and backgammon playing surfaces. Distressed red and black game pieces are included and store easily in two drawers. 

25524 Minorca, Accent Table

28"x 29"x 22" Solid, plantation grown mango wood hand painted in distressed apple red with turned legs, carved stretcher, and two dovetail drawers. 



24088



25524





25588 Takia, Accent Table
24" x 26" x 24" Hand carved, solid mango wood
with layers of distressed, burnt red under black. *Uttermost*

