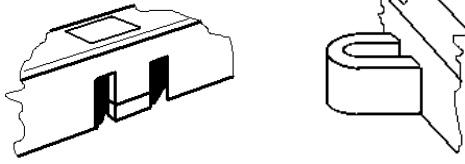


## **GENERAL INFORMATION**

There are two parts to the inter-locking system.

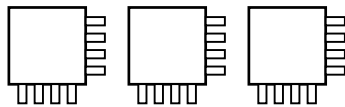


*The Male Peg / The Female Loop*

All tiles on any given installation should always have the female loops going in the same direction. (*Illustration 1*)

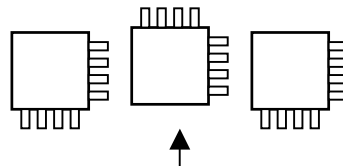
**CAUTION:** If you inadvertently rotate a tile 90 degrees it will snap into place (*Illustration 2*) but you will not be able to complete the installation properly.

*Illustration 1*



*Correct*

*Illustration 2*



*Incorrect*

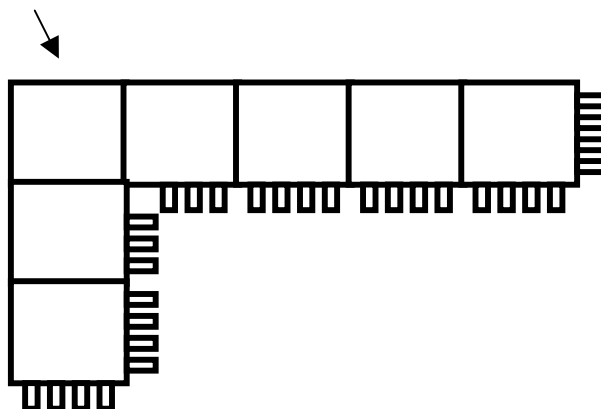
It is important that all debris be removed from the underlying surface before laying tiles, eliminating lumps.

## **ASSEMBLY**

Always begin the installation in one corner. Pointing the female loops in the directions that additional tiles are to be added. (*Illustration 3*)

*Garage Entrance*

Start Here



*Illustration 3*