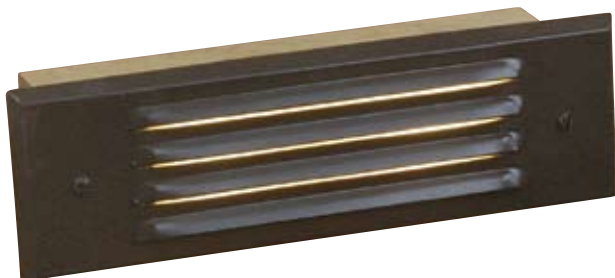


## S10 Long Step Light Brass



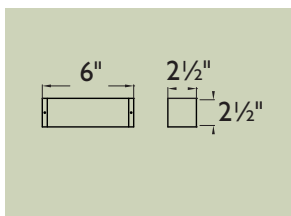
**15 Louver**  
Natural Antique  
Bronze  
(NAZ)



**16 Window**  
Natural Antique Bronze  
(NAZ)



**17 Grille**  
Natural Antique  
Bronze  
(NAZ)



### Housing

- Recessed mount
- Solid Brass housing with a choice of three Solid Brass covers

### Lens

- Heat and impact resistant glass

### Socket and Wiring

- Bi-pin type G4/GU5.3 with stainless steel spring.
- Pre-wired w/ 3 foot 16 gauge wire leads.

### Ordering Example

**S10 B 18 NAZ**

Model	Material	Cover	Socket/Lamp	Natural Finishes	Powder Coat
<b>S10</b>	<b>B</b> Solid Brass	15 Louver	G4/GU5.3	<b>NAP NAR</b>	<b>PAB PBZ</b>
		16 Window	10W L-JCB-10	<b>NAS NAZ</b>	<b>PDV POC</b>
		17 Grille		<b>NOC UFB</b>	<b>PRI PSD</b>
					<b>PTB PWB</b>
					<b>PTW</b>

\*We reserve the right to change specifications without notice.