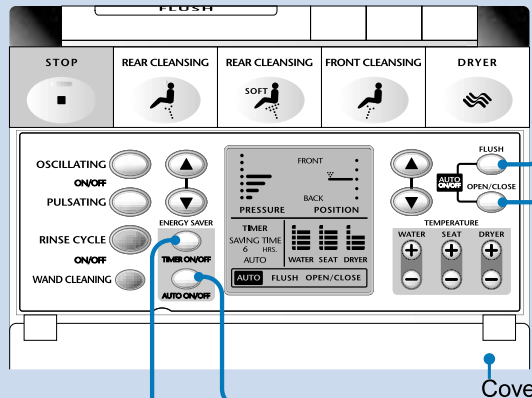


Comfort functions

For details, refer to pages 17 ~ 25 of the Instruction Manual



Auto Flush

When you leave the seat, the toilet is flushed automatically.

For troubleshooting, refer to page 42 of the Instruction Manual.

Auto Open/Close

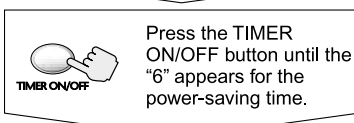
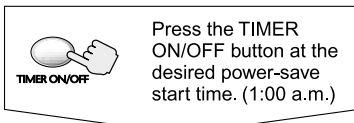
The sensor senses a person and the lid opens and closes itself.

For troubleshooting, refer to page 41 of the Instruction Manual.

Timer Energy Saver

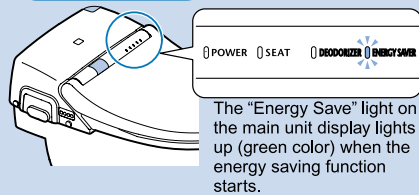
Once set, the seat heater turns off at the preset hour everyday to save power. (You can choose the duration of power save mode from 3, 6 or 9 hours.)

Example To save power for 6 hours. (1:00 ~ 7:00 a.m.)



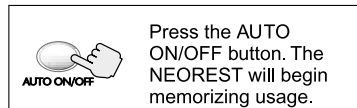
Power save mode starts.

Main Unit Display



Auto Energy Saver

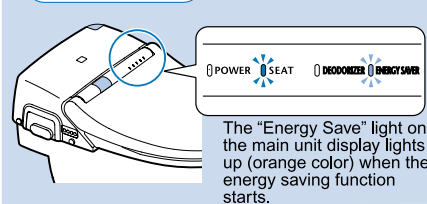
Hours in which the toilet is not so frequently used are memorized. The seat temperature is automatically kept low during these hours to save power.



Finish

Memory power save mode starts.

Main Unit Display



The timer energy saver and auto energy saver functions can be used simultaneously.

TOTO

NEOREST 500
MS950CG

How to use

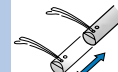
For details, refer to pages 13 and 14 of the Instruction Manual

For adjusting water pressure and wash position



Comfort Washing

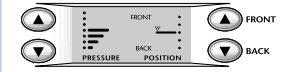
The wand moves back and forth.



The water pressure changes for washing the bottom.



Water pressure and wash position are adjusted.



Open and close the seat and lid

To close both the seat and lid.

To open the lid and close the seat.

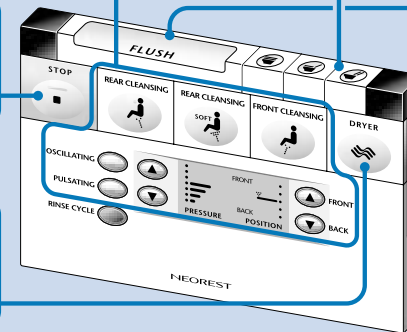
To open both the seat and lid.

Stopping

To stop the washing and drying.

Drying

To blow warm air and dry your bottom.

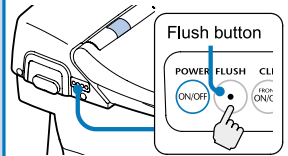


Flushing

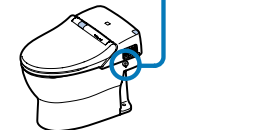
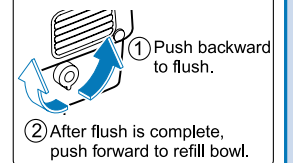


The toilet can be flushed with the remote controller.

When the remote controller battery has run down.

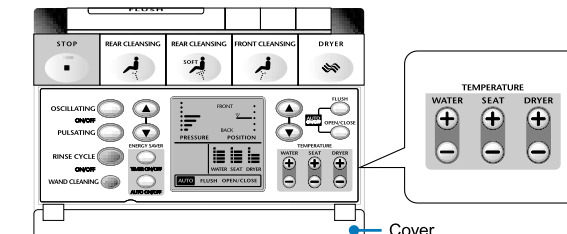


In case of power failure



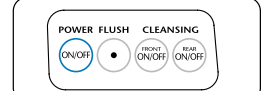
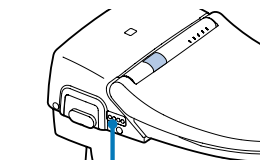
Temperature adjust

Press the temperature change buttons (+ or -) for the feature



For details, refer to page 15 of the Instruction Manual.

Main control panel



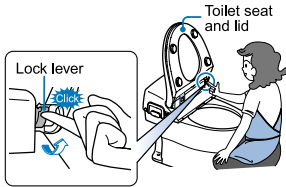
Use in case of necessity.

Caring for your NEOREST

Toilet seat, lid

Removing

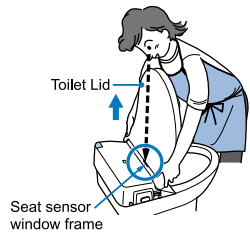
- 1 Raise the toilet seat and lid and lift up the seat lock lever (gray) until it clicks.



- 2 Align the toilet lid with the upper edge of the seat sensor window frame (Black).

Pull the toilet seat and lid straight up with both hands.

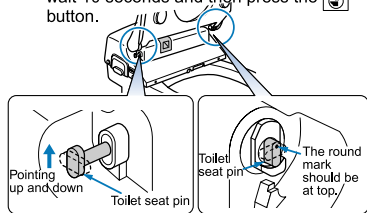
- ❖ The toilet seat cord is approximately 2 inches (5 cm) long. Please do not pull with unnecessary force. (Doing so could damage the cord.)



Reattaching

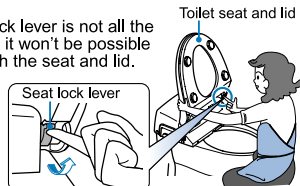
- 1 Make certain that the toilet seat pins are pointing up and down.

- ❖ When they are not pointing up and down, please press the button on the remote, wait 10 seconds and then press the button.



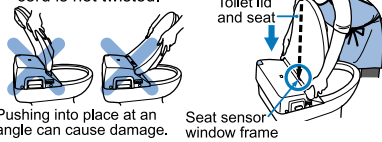
- 2 Make certain that the seat lock lever (gray) is up.

- ❖ If the lock lever is not all the way up, it won't be possible to attach the seat and lid.



- 3 Align the toilet seat and lid with the upper edge of the seat sensor window frame (black) and press firmly down.

- ❖ Please attach them so that the blue line of the of the toilet seat cord is not twisted.



- ❖ Pushing into place at an angle can cause damage.

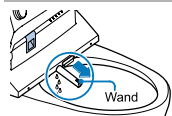
- 4 Lower the seat lock lever (gray) until it clicks into place.

- ❖ If the lock lever won't go back into place, the toilet seat and lid will not be attached. Mount the seat and lid again in position.

For details, refer to page 33 of the Instruction Manual.

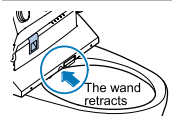
Cleaning the wand

Extending the wand



- Push the **WAND CLEANING** button on the remote controller.

Retracting the wand



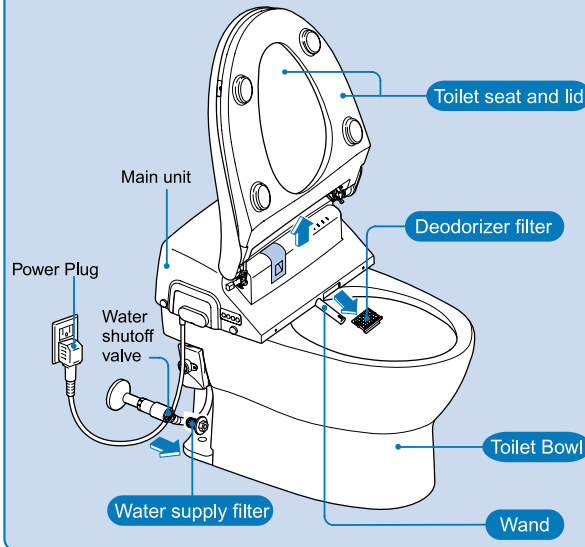
- Push the **WAND CLEANING** button on the remote controller again.

Before Cleaning

Turn OFF the **FLUSH** **OPEN/CLOSE** before cleaning. Otherwise, auto flush or auto open/close functions may work during cleaning.

Tips for cleaning NEOREST

- Each component can be disassembled for thorough cleaning
- Wet and wring out a soft cloth for wiping the seat, lid and wand.
- Use a small brush, such as a toothbrush to remove any dirt that is clogged in the filter.



Toilet Bowl

For details, refer to pages 34 and 35 of the Instruction Manual.

- 1 Push the **RINSE CYCLE** ON the remote control.
- 2 Water swirls to wash the bowl for 30 seconds.
- 3 The wash mode lasts 30 seconds.
- 4 The toilet flushes the wash water.

Clean the inside of the toilet bowl. Press the **RINSE CYCLE** button to start the wash mode before detergent stands for 3 minutes.

For your safety, be sure to inspect your Neorest 500 occasionally.

- Is the power plug abnormally hot?
- Is the power plug covered with dust?
- Is the outlet loose?
- Is the Neorest 500 operating differently than usual?

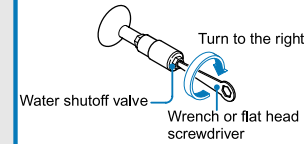
* In case anything is abnormal, contact TOTO USA to prevent a fire or an electrical shock.

Water supply filter

For details, refer to page 31 and 32 of the Instruction Manual.

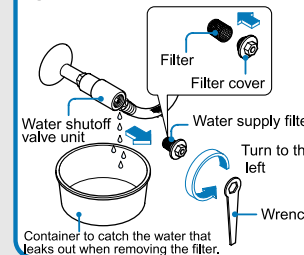
Removing

- 1 Shut off the water valve and turn off the water supply.



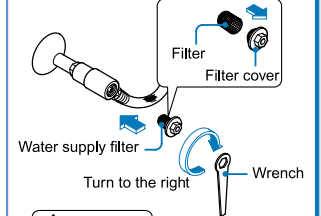
Caution
Do not remove the water supply filter with the water shutoff valve in the OPEN position to prevent sudden water discharge.

- 2 Remove the water supply filter.



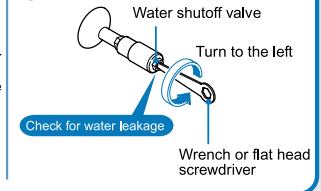
Reattaching

- 1 Reattach the water supply filter.



Caution
Be sure to tighten the water supply filter securely. A loose filter may result in water leakage.

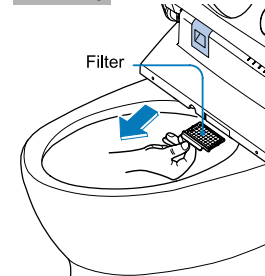
- 2 Open the water shutoff valve.



Deodorizer filter

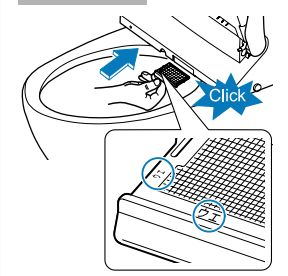
For details, refer to page 30 and 31 of the Instruction Manual.

Removing



- Pull the filter (gray) forward.

Reattaching



- Look for the "ウエ" markings on the top of the filter.