

NEOREST® 500 Installation Instructions

● Read and follow all of the instructions before installing the NEOREST.

Safety Instructions

Always follow the safety precautions/warnings when using and installing the NEOREST.

⚠ WARNING: Improper use of this product may result in death or serious injury.

⚠ CAUTION: Improper use of this product may result in injury or property damage.

⊘ This symbol indicates a prohibited use of the product.

! This symbol is used to indicate a required step in the use of this product.

⚠ WARNING:

<p>⊘ Do not use this product in wet or damp places, such as a shower or bathtub area. (This may cause fire or electrical shock.)</p> <p><small>Prohibited Use of This Product:</small></p>	<p>⊘ This product should be used with 120V electrical voltage only to avoid the risk of fire of electrical shock.</p>	<p>⚡ Always plug into a grounded (3 prong) plug to prevent electrical shock in the case of malfunction or short circuit.</p>
<p>⊘ Connect to a proper water source to avoid the risk of skin irritation.</p>	<p>⊘ Do not use a damaged plug or cord or insert into a faulty electrical outlet, as this may result in fire or electrical shock.</p>	<p>! Always insert the electrical plug securely into the wall outlet. Failure to do so may result in fire or electrical shock.</p>

⚠ CAUTION:

<p>! Always follow the installation instructions when installing the product. Improper installation may result in water leakage, electrical shock or fire.</p>	<p>⊘ Do not lift the Washlet section by grabbing the seat or lid. The seat or lid may detach and drop or damage the Neorest.</p>	<p>⊘ Do not bend or crush the flexible connecting hose as this may result in water leakage.</p>
<p>⊘ To prevent sudden water leakage, do not remove the water supply filter before closing the water shutoff valve.</p>	<p>! When installing the water supply filter, make sure that it is tightened securely. Improper installation of the water supply filter may result in water leakage.</p>	<p>! Be sure to attach the connecting hose and the diverter in place correctly. Improper installation could result in leaks and property damage.</p>

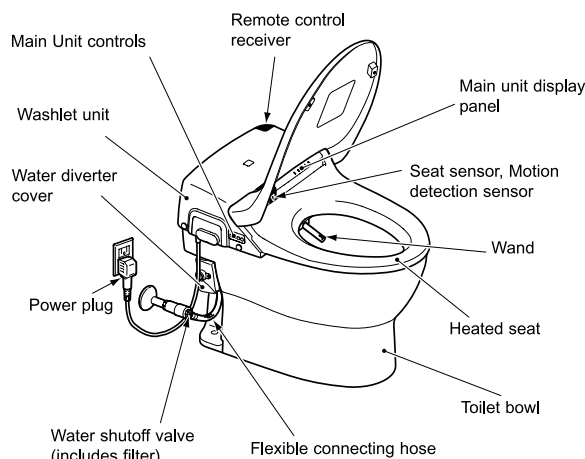
Before Installation

1. **Do not apply power or supply water to the unit until the installation process is complete.**
2. **Please do not damage the tip of the connecting hose.**
3. The power supply voltage is 120V (60Hz). The rated power consumption is 1281W. Use wiring and electrical outlet appropriate for this level of power.
4. The power cord is 3 feet (1 meter) in length, The electrical outlet should be mounted on the wall, within reach of the power plug.
5. **Use a minimum water supply pressure of 10 PSI (0.07 MPa) flowing.**
6. The water temperature range should be 0 ~ 35°C (32 ~ 95°F).
7. Only use the flexible connecting hose that comes with the unit.

Parts Identification

<p>Remote Controller parts</p> <p>Remote Controller </p> <p>Remote Controller Hanger </p> <p>Batteries (AA x 2) </p> <p>Screws (3) </p> <p>Anchor Bolts (3) </p>	<p>Bolt Caps</p> <p></p> <p>(2)</p> <p>Decorative Cover</p> <p></p> <p>Cap Screw</p>
<p>Washlet unit installation hardware</p> <p>Bolts (2) </p> <p>Screws (2) </p> <p>Wrench (For water line) (1) </p> <p>Fastener (for connecting hose) (1) </p> <p><i>*Please give the wrench to the owner after installation.</i></p>	<ul style="list-style-type: none"> • Instruction Manual (3) • Installation Instructions (3) • Warranty Card • "How To" Sheet (3) • Hook <p></p>

Features



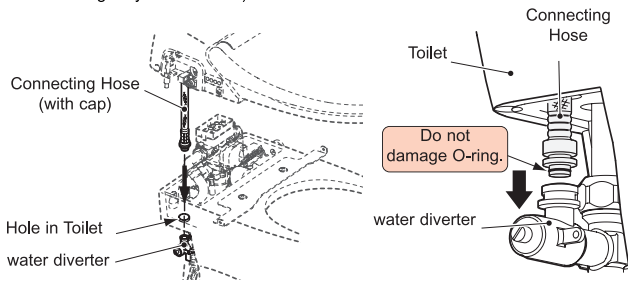
The installation procedure

Please install the Washlet™ unit correctly and according to this installation procedure. Please see the "Installing the Washlet unit" for more detail.

- 1 Position the Washlet on the toilet.
*Do not secure to toilet bowl.
- 2 Connect the connecting hose and water diverter.
*Leave the water shut off until trial operation.
- 3 Install the toilet flush valve connector wire.
- 4 Affix Washlet to the toilet.
- 5 Check the power plug.
- 6 Install the Remote Controller
Trial Operation (Check function and leaks.)
Attach water diverter cover.

Caution

- When the connecting hose is placed through the hole in the toilet, be careful that the hose is not bent. (Bending may cause leaks.)
- Do not damage the O-ring on the end of the connecting hose. (Damage to the O-ring may cause leaks.)



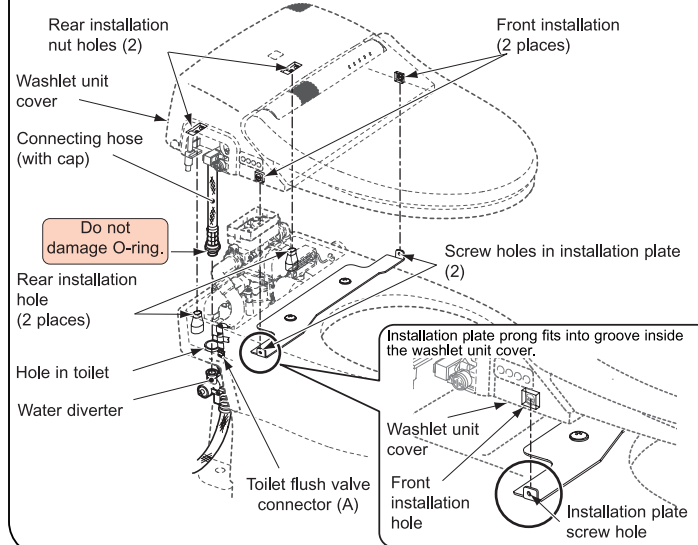
Installing the Washlet™ unit

1 Position the Washlet™ on the toilet.

Caution

Please secure the Washlet to the toilet after the connecting hose has been connected. Securing the Washlet first makes it harder to connect the connecting hose.

- ① Remove the cap from the end of the connecting hose.
- ② Install the connecting hose in the hole in the toilet as you lower the entire Washlet unit onto the bowl.
- * Please check that the toilet washing valve connector (A) is not pinched.
- ③ Align the front installation holes with the screw holes of the installation plate and position the unit on the toilet.



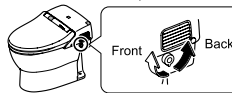
2 Connecting the Connecting Hose and Water diverter

Caution

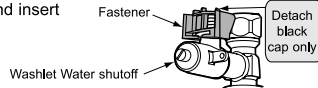
* Please do not open the water shutoff valve before connecting the connector hose. The water pressure could make it hard to connect the connecting hose.

* Releasing Water Pressure

- ① Close the water shutoff valve.
- ② Operate the manual flush switch with the Washlet water line on the water diverter open.

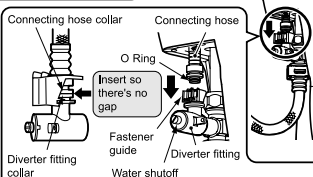


- 1 Turn the connecting hose to the horizontal position and insert it into the elbow joint. Depending on the time of manufacture, there may or may not be a fastener guide.



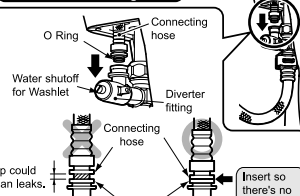
③ Close the water shutoff valve.

With a fastener guide



* Please do not set the connecting hose at an angle. (It could scratch the O ring and cause leaks.)

Without a fastener guide



* Please do not set the connecting hose at an angle. (It could scratch the O ring and cause leaks.)

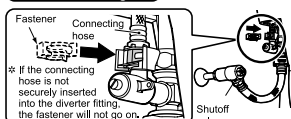
② Fix the connecting hose in place with the fastener.

* Please check that it is secure and that the hose will not come out.

* The Washlet will be unusable if it is not set properly.

* Please attach the diverter cover after checking for leaks during the trial run.

With a fastener guide



* If the connecting hose is not securely inserted into the diverter fitting, the fastener will not go on.

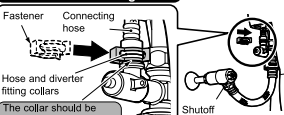
How to remove the fastener



Caution

Be sure to fix the connecting hose and diverter fitting in place with the fasteners. (If they are not securely in place, the hose may come out and spray water.)
Always Do

Without a fastener guide

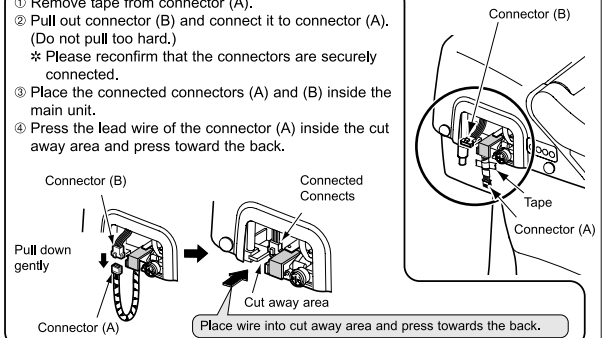


The collar should be completely in the groove.

3 Install the toilet Flush Valve connector wire

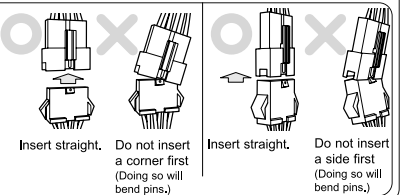
- 1 Connect the toilet flush valve connector.

- ① Remove tape from connector (A).
- ② Pull out connector (B) and connect it to connector (A). (Do not pull too hard.)
* Please reconfirm that the connectors are securely connected.
- ③ Place the connected connectors (A) and (B) inside the main unit.
- ④ Press the lead wire of the connector (A) inside the cut away area and press toward the back.



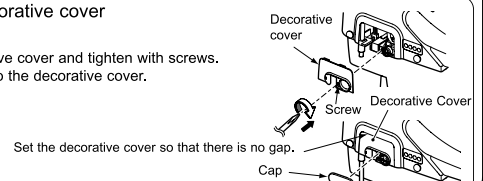
Caution

Insertion at an angle can result in malfunctions.



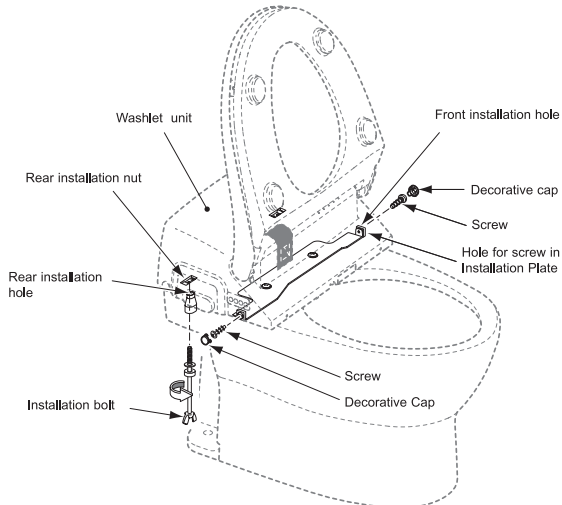
- 2 Attach decorative cover

- ① Set the decorative cover and tighten with screws.
- ② Attach the cap to the decorative cover.



4 Affixing the Washlet to the Toilet

- ① Lift the toilet lid and seat (to facilitate installation and avoid damage).
- ② Align the front installation hole with the screw hole in the installation plate and tighten the screws (both sides).
* If it is hard to tighten the screws, push down on the Washlet unit.
- ③ Insert the installation bolts (both) into the rear installation holes and tighten them into the rear installation nuts.
- ④ Tighten the screws and installation bolts again and make sure that the unit is fixed in place.
- ⑤ Attach the decorative cap over the front installation holes (the cut-out faces downward).



5 Check the Power Plug.

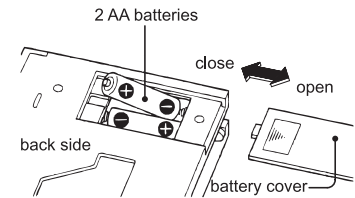
⚠ Caution

If the toilet lid runs into an obstacle when opening the first time the unit is powered up, the lid may stop part-way on subsequent uses. (It learns the initial open position.) Be sure there are no obstacles, remove and reinsert the power supply plug and press the button on the remote control.

- ① Insert the power supply plug into a 120V (60Hz) GFCI (Ground Fault Circuit Interrupt) outlet.
 - Please confirm that the wand extends and retracts, while going through the initial start up.

6 Installing the Remote Controller

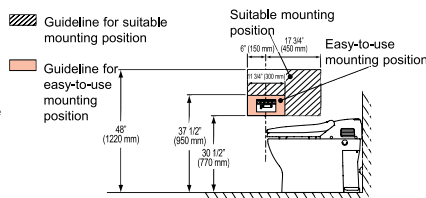
- ① Insert the alkaline batteries into the battery holder on the remote controller.
 - * Be sure to install the batteries in the correct +/- positions.



- ② Select the desired position for hanging the remote controller.

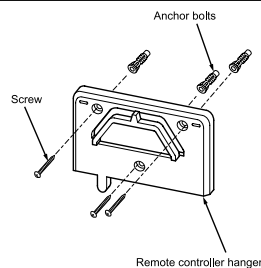
⚠ Precaution

- Before attaching the remote controller to the wall, make certain that the controller works in that spot. Sit on Neorest to activate sensor. Press 'wand extending' button. If wand extends, the remote position is good. Note that no water will be sprayed in 'wand cleaning' mode.
- If the remote controller does not activate the toilet functions from the selected mounting position, try another position on the opposite wall or refer to the figure below for installation guidelines.



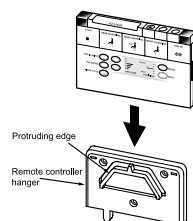
- ③ Attach the remote controller hanger to the wall.

- Drill small holes (1/8" D (3 mm)) in the wall to make it easier to drill in the screws.
- When installing onto sheet rock or tile, first drill 1 5/16" deep (1/4" D (6mm)) holes into the wall and then use anchor bolts to attach the hanger to the wall.



- ④ Insert the remote controller into the wall hanger.

- Insert from the top along the protruding edge.

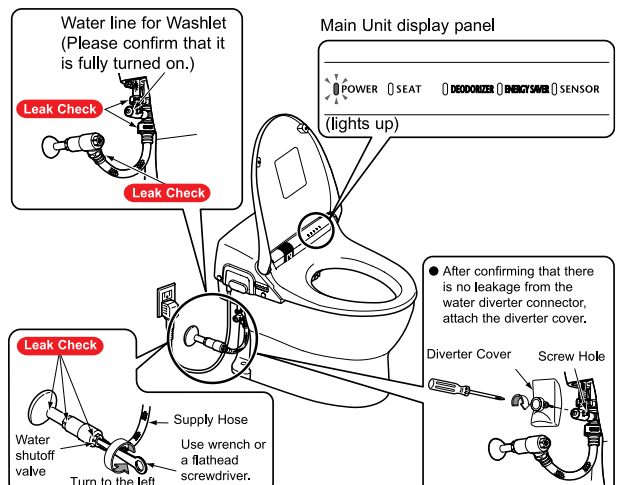


Trial Operation

- Before trial operation, be sure to confirm that the Power On/Off switch is set to On. (When On, the "Power" light will be on.) When the Power On/Off switch is Off, the Washlet will not run even when the power supply plug has been plugged into the power outlet.
Even if it will be a while before the customer uses the unit, please do not turn off the Power On/Off switch.

1 Leak Inspection

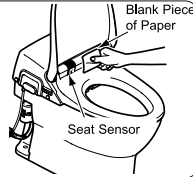
- Before supplying water, make sure that the plumbing connections are tight and the fasteners have been properly set.
- Open up the water shutoff valve and confirm that there are no leaks from the plumbing connections.
- Confirm that there are no leaks from the water supply connectors of the Washlet itself.
- * If there happens to be leaking, turn the water off and go through the installation procedure again to stop the leaks.



Trial Operation (Continued)

2 Checking the functions (If the toilet lid is not closed, the seated sensor will not work.)

- 1** Cover the seat sensor with a blank piece of paper.
- * When covered with a blank piece of paper, the seat sensor will "detect" someone sitting there. When it does, water will spray from around the wand for a few seconds.



- 2** Check the deodorizer function.
- Does air blow out of the right side surface of the main unit?



- 3** Check the washing functions.
- When the "Bottom/Soft/Front" buttons are pressed, is warm water sprayed from the wand?
 - * If there is no water, check Installing the Washlet unit [2].
 - Does the water pressure change when the "Water Pressure" button is pressed?
 - When the "Stop" button is pressed does the water stop?
 - Please catch the water with a cup or other container.



- 4** Check the drying function.
- When the "Dry" button is pressed, does warm air come out of the right side of the wand?
 - When the "Stop" button is pressed, does it stop?

- 5** Check heated toilet seat function.
- It takes approximately 15 minutes for the toilet seat to heat up.

- 6** Remove the blank piece of paper from the seat sensor.

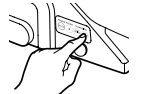
- 7** Check the Auto Flush function.
- Raise the toilet seat and lid and stand in front of the toilet for 6 seconds or more. When you stepped away from the toilet, did the toilet automatically flush within approximately 3 seconds?
 - * When the water flow to the toilet is poor, it could be that the supply water pressure is low. If that is the case, please adjust the supply water pressure as set forth in the toilet installation manual.

- 8** Check the remote control toilet seat and lid open/close function.
- When the "Lid/Seat" buttons are pressed, do the toilet seat and lid open and close?

- 9** Check the remote toilet flush function.
- * Please wait at least 10 seconds after the automatic flush before checking the remote toilet flush function.
 - Does water flow through the toilet when the "Flush" button is pressed?

- 10** Check the automatic open/close function.
- Please close the toilet seat and lid and step away from the toilet. Does the toilet lid open automatically when you stand in front of the toilet?
 - After the toilet lid opens, please open the toilet seat. After stepping away from the toilet, does the toilet seat and lid close after approximately 90 seconds?

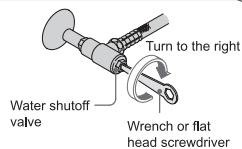
- 11** Check anti-freezing protection.
- Freezing can be prevented for a specific period of time by following the procedure below.
- ① Press and hold the "Rear Wash" button on the main unit controls for 10 seconds.
 - Does the "Power" light blink?
 - Does water spray out of the base of the wand after five minutes?
 - Does the toilet flush after another five minutes?
 - ② After checking, press and hold the "Rear Wash" button for 10 seconds again. (This turns off anti-freezing mode.)
 - Does the "Power" light on the main unit change from blinking to steady?
- * Please be sure not to leave the "Power" light in blinking.



Cleaning the Water Supply Filter

- A clogged water supply filter will affect the performance of the product. Be sure to clean the filter after performing Trial Operation using the procedure described below.

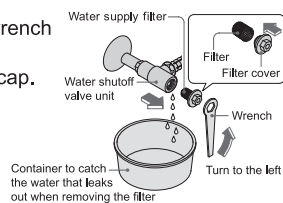
- 1** Close the water shutoff valve to turn off the water supply.
- Use the wrench provided in the installation kit to close the water shutoff valve.



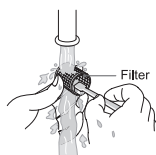
Caution

Do not remove the water filter while the shutoff valve is open to prevent the water from spewing out.

- 2** Remove the water supply filter.
- Remove the filter cap with the wrench provided.
 - The filter will come out with the cap.



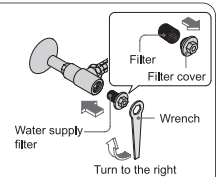
- 3** Clean the filter.
- Remove the filter and run the strainer under water to remove dirt and debris.
 - * Use a small brush, such as a toothbrush, to remove fine particles.
 - * Use a cotton swab to wipe the entire strainer free of dirt.



- 4** Reinstall the water supply filter.
- Reassemble the filter and cap, insert and tighten the cap with the provided wrench.

Caution

Be sure to tighten the water filter securely to prevent possible water leakage.



- 5** Open the water shutoff valve.
- Open the shutoff valve with the wrench provided.
 - Check to make sure there is no water leakage from the valve or the fitting.

- 6** Confirm that there is no water leaking from the water line or the plumbing connections.

To the Installer:

- Please be sure to give the wrench and manuals to the customer upon completion of the installation.
- Fill out necessary warranty information on the included warranty card and leave it with the customer.
- Please tell the customer about the Washlet's functions and how to use it. If new home construction means that the customer will not be taking delivery for a while, please unplug the power plug. (However, if freezing temperatures are anticipated, please do not unplug the power plug.)