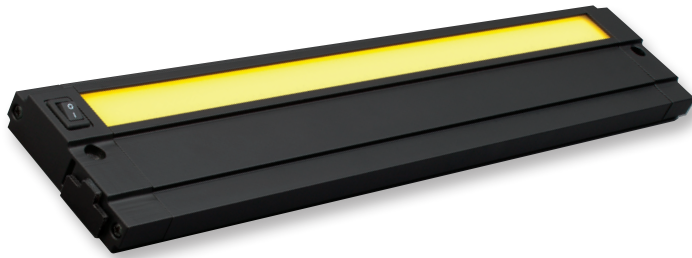
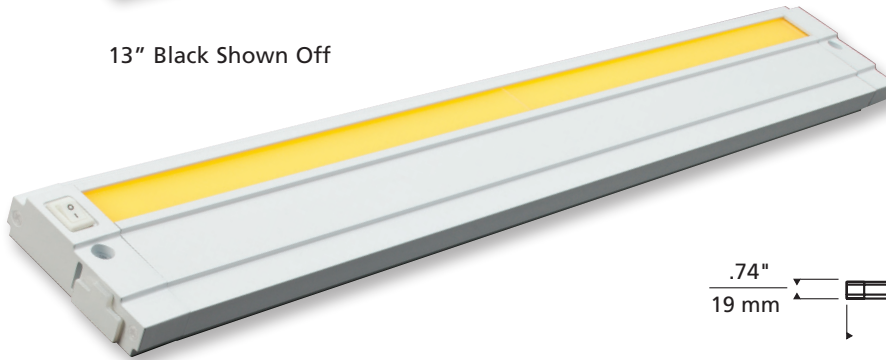
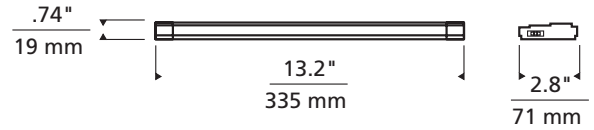


Unilume LED Undercabinet

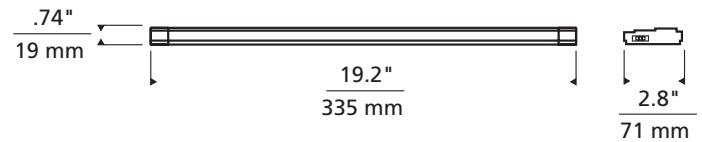
title
24



13" Black Shown Off



19" White Shown Off



DESCRIPTION

Utilizing tightly clustered blue pump LEDs, a 98% reflective mixing chamber and an Intematix ChromaLit™ remote phosphor lens, the result is consistent illumination with ultra high efficiency – all in a housing that is less than 3/4 of an inch deep. An integrated LED driver makes installation easy and allows smooth dimming down to 15% using a standard or ELV dimmer. Available in two color temperatures: 2700 and 3000K and choice of CRI: +80 or +90 in black or white housing.

INTEGRATED DRIVER AND SMOOTH DIMMING

120 volt input makes installation easy. Smooth dimming down to 15% using a TRIAC or ELV dimmer. Jumper cables make it easy to link one unit to another (sold separately). Each unit has an integrated on-off switch.

TECHNICAL SPECIFICATIONS*

	13" Length	19" Length
System Power:	8.5 watts	10.5 watts
System Lumens:	432	645
System Efficacy:	51 lms/watt	61 lms/watt
Color Temperature:	2700K, 3000K	
Color Rendering Index:	80+, 90+	
Rated Average Life:	50,000 hours to 70%	
Power Factor:	0.94	
Dimming:	To 15% with standard or ELV Dimmer	
Warranty:	5 Years	

*Based on 3000K, 80+ CRI option

ORDERING INFORMATION

700UCF	LENGTH	CRI	COLOR TEMPERATURE	FINISH	LAMP TYPE
	13 13.2"	8 80+	2 2700K	B Black	-LED LED
	19 19.2"	9 90+	3 3000K	W White	



TECH LIGHTING®

7400 Linder Avenue T 847.410.4400
Skokie, Illinois 60077 F 847.410.4500

www.techlighting.com

700UCF _____ -LED

FIXTURE TYPE: _____

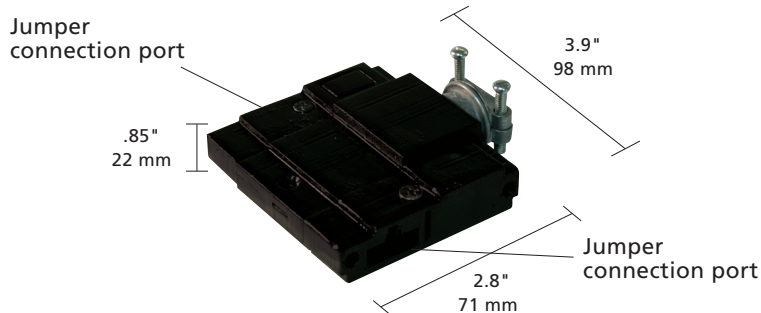
JOB NAME: _____



Unilume LED Undercabinet Accessories

SPLICE BOX

Required for hardwire applications. A connection port is located on each side to feed runs in both directions. The 1" Jumper Connector can be used to place the Splice Box next to the Undercabinet Housing or a longer Jumper Connector can be used to place the Splice Box in a more convenient or remote location. Includes Romex/½ conduit connector.



700UCSB FINISH

- B** BLACK
- W** WHITE

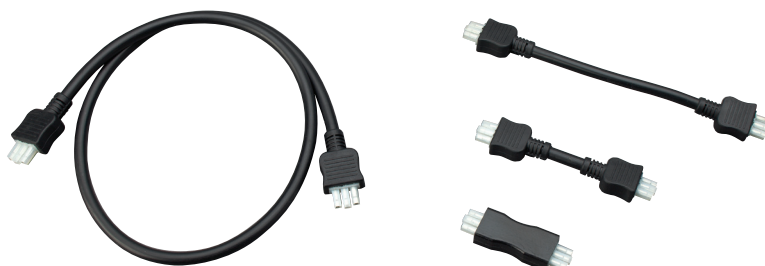
*Requires jumper cable, to be ordered separately

JUMPER CONNECTORS

Used to link one Undercabinet Housing to another or to a Splice box

700UCJC	LENGTH*	COLOR
01	1"	B BLACK
03	3"	W WHITE
12	12"	
24	24"	

*For custom lengths, contact our factory



WALL PLUG-IN

Can be used to plug one Undercabinet Housing directly into an outlet.

700UCPL	LENGTH*	COLOR
24	24"	B BLACK
72	72"	W WHITE

*For custom lengths, contact our factory



UNILUME LED UNDERCABINET 2012 AWARDS



TECH LIGHTING®

7400 Linder Avenue T 847.410.4400
 Skokie, Illinois 60077 F 847.410.4500

www.techlighting.com

Tech Lighting

LED lighting facts®
A Program of the U.S. DOE

Light Output (Lumens)	645
Watts	10.5
Lumens per Watt (Efficacy)	61
Color Accuracy	
Color Rendering Index (CRI)	80
Light Color	
Correlated Color Temperature (CCT) 3074 (Bright White)	
2700K	3000K
4500K	6500K
All results are according to IESNA LM-79-2008: Approved Method for the Electrical and Photometric Testing of Solid-State Lighting. The U.S. Department of Energy (DOE) verifies product test data and results.	
Visit www.lightingfacts.com for the Label Reference Guide .	
Registration Number: YKL8-V4HBBP (9/25/2012) Model Number: 700 UCF 1983 W-LED Type: Under-cabinet or Shelf-mounted light	

