

Cabo Grande Wall (Compact Fluorescent)

700WSCBOGH_-CF

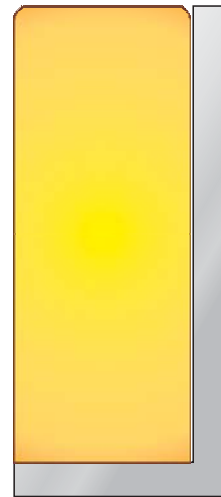
1.0



GENERAL PRODUCT INFORMATION:

This product is suitable for damp locations.

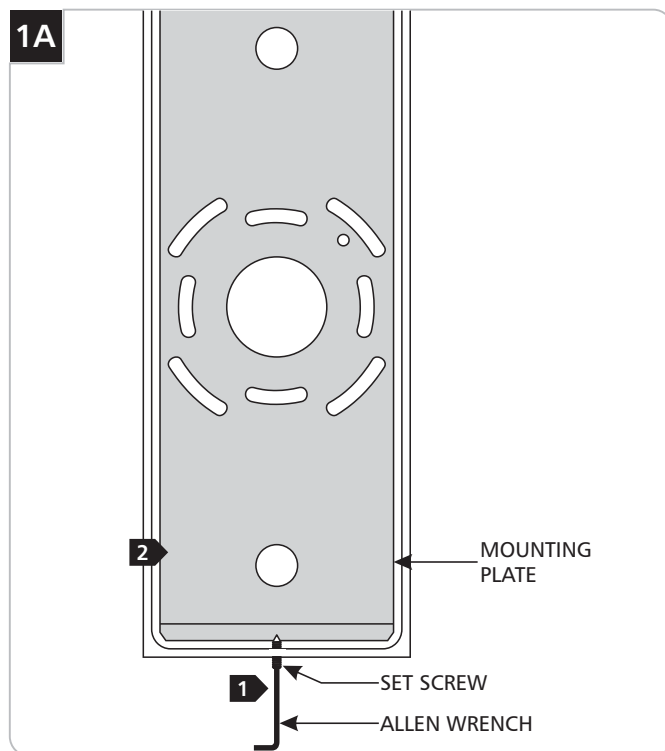
This product can mount to either a 4" square electrical box with round plaster ring or an octagon electrical box.



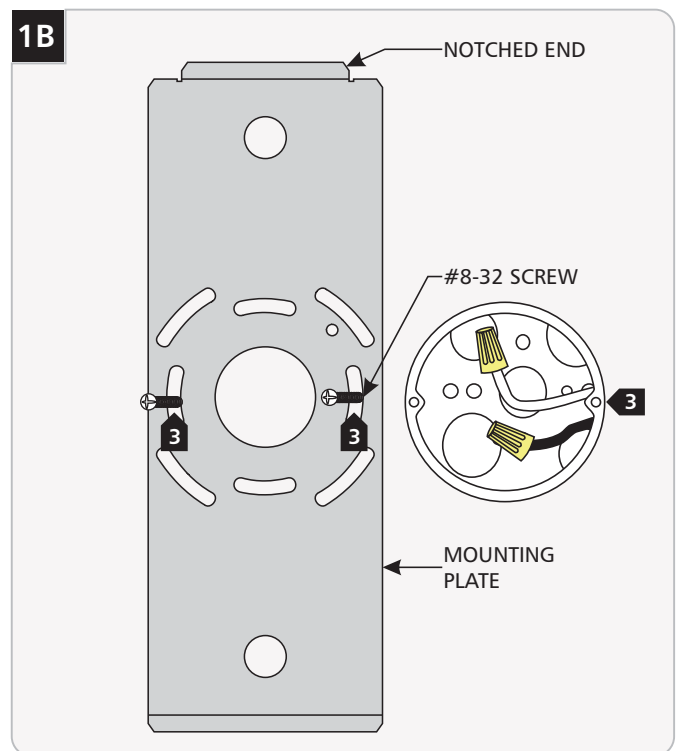
CAUTION—RISK OF FIRE

This product requires installation by a qualified electrician. Before installing be sure to read all instructions and DISCONNECT POWER TO THE ELECTRICAL BOX.

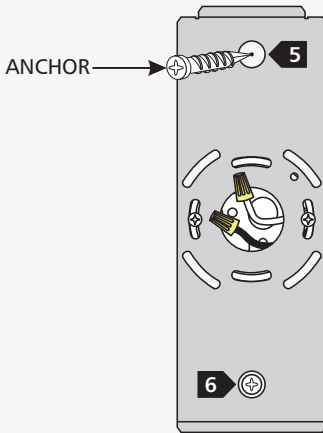
Mount the Sconce to the Electrical Box



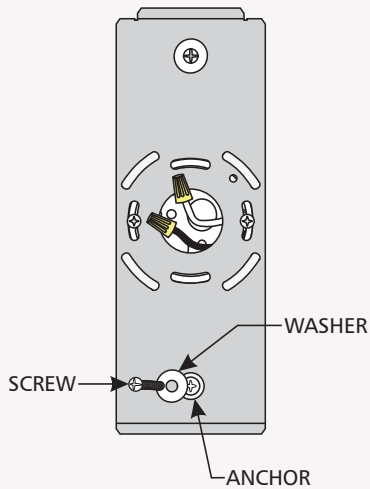
- 1 With the Allen wrench provided, back out (do not fully remove) the set screw at the base of the sconce.
- 2 Remove the mounting plate from the back of the sconce.



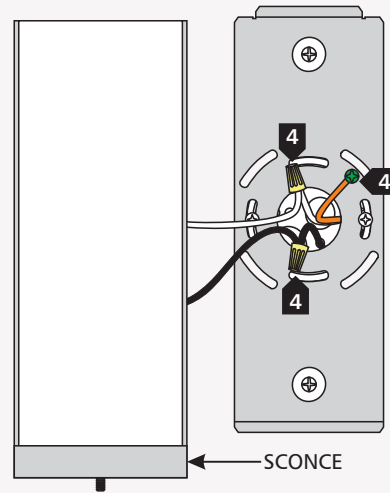
- 3 Attach the mounting plate to the electrical box using the two #8-32 screws provided. Make sure the notched end of the mounting plate is at the top.

1C

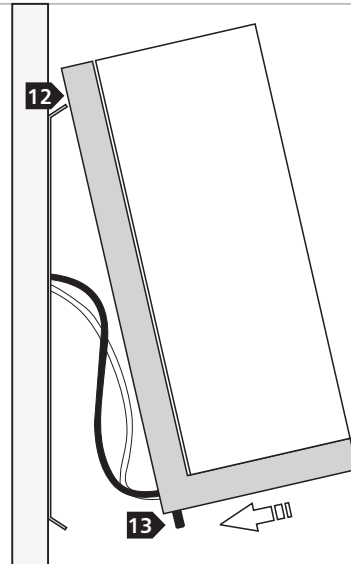
- 4 Verify that the mounting plate is level before continuing.
- 5 Line up an anchor tip with the center a mounting plate hole, and push the anchor into the wall up to the threads.
- 6 Screw the anchors in the rest of the way with a Phillips-head screwdriver.
- 7 Repeat steps 2-3 for the other anchor.

1D

- 8 Slide a #8 screw through a washer and screw it into an anchor. Repeat for the other anchor to secure the mounting plate to the wall.

1E

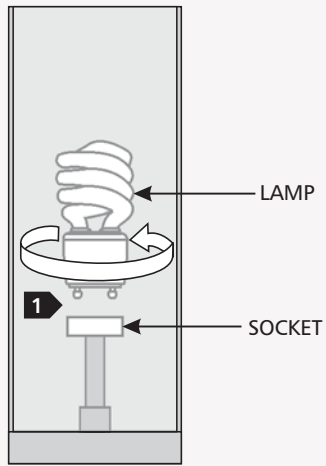
- 9 Connect the mounting plate ground wire to a suitable ground according to local electrical codes.
- 10 Connect the white scence wire to the neutral power line wire with a wire nut.
- 11 Connect the black scence wire to the hot power line wire with a wire nut.

1F

- 12 Hook the top of the scence to the top of the mounting plate and swing the bottom of the scence toward the plate until it is flush with the wall.
- 13 Tighten the set screw at the bottom of the scence to secure it to the mounting plate.

Install the Lamp

2A



CAUTION: To reduce the risk of a burn or electric shock during relamping, disconnect the power to the fixture.

Use **MAX** 120 Volt, **18** Watt Type GU24 Base Self-Ballasted Spiral Compact Fluorescent Lamp.



- 1** Push the lamp pins into the large portion of the socket slots and rotate it clockwise to lock it in place securely.

Statement of Warranty

Tech Lighting warrants all products manufactured to be free from defects in material and workmanship under normal use for 3 years after the date of original purchase. This warranty only applies when components, including power supplies, have been provided by Tech Lighting.

Upon confirmation of a defect or failure, at our discretion we will repair or replace the item or will refund your purchase price if repair or replacement is not possible or practical. Our warranty covers only the product itself; we will assume no liability for labor costs, installation costs, or other losses.

SAVE THESE INSTRUCTIONS!



7400 Linder Ave, Skokie, IL 60077

847.410.4400

www.techlighting.com

© 2008 Tech Lighting, L.L.C. All rights reserved. The "Tech Lighting" graphic is a registered trademark of Tech Lighting, L.L.C. Tech Lighting reserves the right to change specifications for product improvements without notification.

A Generation Brands Company