

2" Square Flush Canopy

700FJ2SQ67_

1.9



SINGLE PORT CANOPIES

GENERAL PRODUCT INFORMATION:

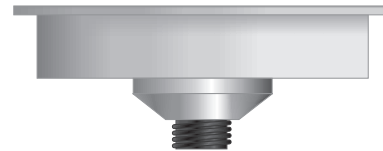


This product is suitable for indoor dry locations only.

Install the 2" electrical box prior to these steps.

Model numbers ending in "-LED" or "-LED277" can be dimmed with a low-voltage electronic dimmer, have a rated maximum output of 10 watts, and are compatible with LED elements.

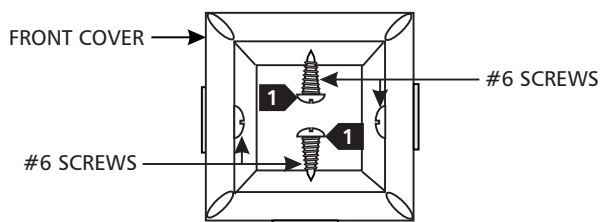
All other model numbers can be dimmed with a standard incandescent dimmer, have a rated maximum output of 75 watts, and are not compatible with LED elements.



CAUTION — RISK OF FIRE

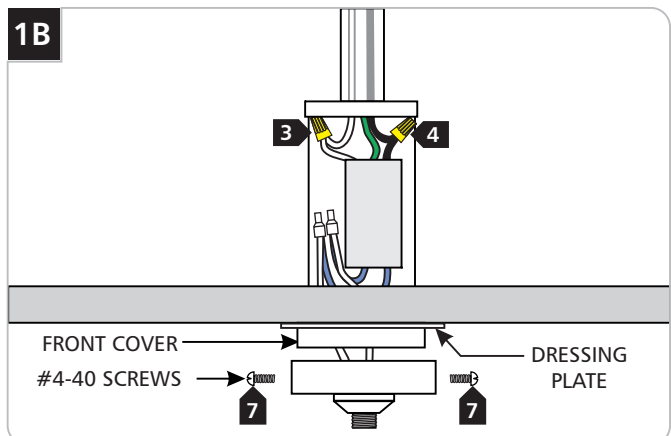
This product requires installation by a qualified electrician. Before installing be sure to read all instructions and **TURN THE POWER TO THE ELECTRICAL BOX OFF.**

1A

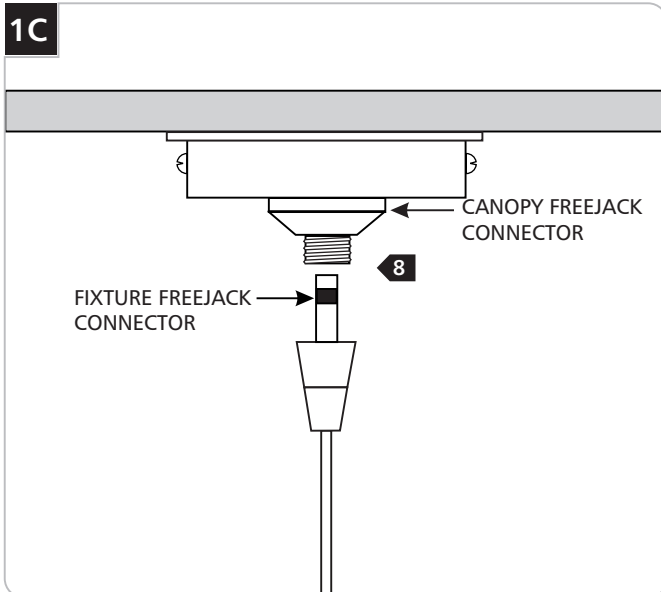


- 1 Remove two #6 opposing screws from the front cover of the 2" Electrical box.

1B



- 2 In accordance with local electrical codes, ground the transformer green wire.
- 3 Connect the white transformer wire to the neutral power line wire with a wire nut.
- 4 Connect the black transformer wire to the hot power line wire with a wire nut.
- 5 Place the transformer and all the wires inside the 2" electrical box. Use the adhesive pads to secure the transformer in the electrical box.
- 6 Replace and tighten the two #6 screws on the front canopy.
- 7 Mount the 2" square canopy to the 2" electrical box with two #4 screws from the both sides.



- 8** Screw the fixture FreeJack connector into the canopy FreeJack connector.

SAVE THESE INSTRUCTIONS!



TECH LIGHTING®

7400 Linder Ave, Skokie, IL 60077

847.410.4400

www.techlighting.com

© 2011 Tech Lighting, L.L.C. All rights reserved. The "Tech Lighting" graphic is a registered trademark of Tech Lighting, L.L.C. Tech Lighting reserves the right to change specifications for product improvements without notification.

A Generation Brands Company