

Location:



Shower-Hand Shower System 3505-H321-V-CYL-B

Specification Submittal



Feature Highlights

- Symmons Shower-Hand Shower System with Symmons Temptrol® pressure-balancing mixing valve with adjustable stop screw to limit handle turn
- Screwless brass escutcheon (-B)
- Cylinder (-CYL) style lever handles
- Separate dual outlet diverter valve
- Showerhead, single mode #352SH
- Mounting bracket and flange for showerhead
- Standard flow rate is 2.5 gpm (9.5 L/min)
Optional lower flow rate restrictor available
- Wall/hand shower, single mode, #H321-V with 5 foot flexible metal hose, in-line vacuum breaker, wall connection and cradle for hand shower mounting
- 30 inch slide bar for mounting hand shower
- Polished chrome finish (standard)

Model Numbers

- 3505-H321-V-CYL-B
Tub-Hand Shower System with Symmons Temptrol® mixing valve p/n 4000-BODY
- 3505-H321-V-CYL-B-TRM
Trim only, valve must be ordered separately
- 4000-BODY
Symmons Temptrol® mixing valve without trim
- 4000-X-BODY
Symmons Temptrol® mixing valve without trim. Valve includes integral service stops
- 4-458E-BODY
Symmons dual outlet diverter valve without trim

Handle Options / Modifications

Append appropriate -suffix to model number



- LR Lever handle
- LP Loop style lever handle

Warranty

- 5 years - for commercial installations

Options / Modifications

Append appropriate -suffix to model number

- IPS IPS connections: 1/2 inch female IPS connections on Temptrol® mixing valve
- X Service Stops: Temptrol® mixing valve includes integral service stops to allow water shut-off for service, p/n 4000-X-BODY (available when ordering 3505-H321-V-CYL-B)
- CHKS Check Stops: Temptrol® mixing valve includes integral check stops (Requires integral service stops, suffix -X. Used in installations where a positive shut-off device is used downstream of mixing valve.)
- REV Reverse core: Temptrol® mixing valve with reverse core. (Requires integral service stops, suffix -X. Used in back-to-back system installations. HOT on the right, COLD on the left)
- B Chrome plastic escutcheon (when -B is selected, -B suffix is deleted from model number, chrome plastic escutcheon is supplied instead of standard brass escutcheon)
- 352SH-3 Showerhead is three-mode in place of standard single mode
- 2.0 Flow rate restrictor, 2.0 gpm (7.6 L/min)
- 1.5 Flow rate restrictor, 1.5 gpm (5.7 L/min)
- L/HS Hand Shower wand not included, Includes hose, in-line vacuum breaker, wall connections and flange only
- L/HD Showerhead not included, Includes mounting bracket and flange
- 72 6 foot metal hose in place of 5 foot hose
- R60 Vinyl 5 foot hose in place of metal hose
- R72 Vinyl 6 foot hose in place of metal hose
- B48 48 inch slide bar in place of standard 30 inch

Finish Options / Modifications

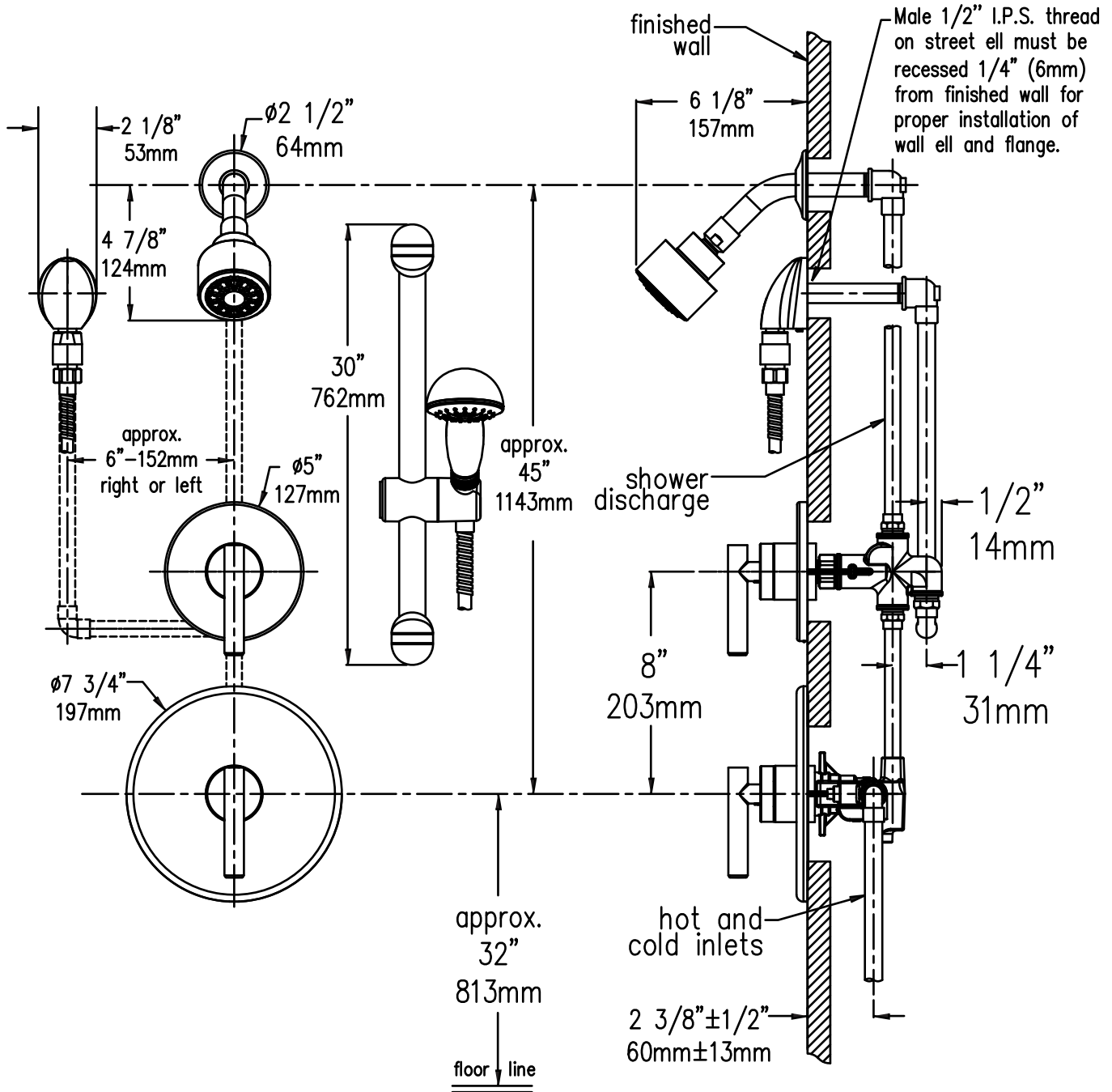
Append appropriate -suffix to model number

- STN Satin nickel
 - Polished chrome (standard finish)

Standards / Certifications

ASME A112.18.1-2005 / CSA B125.1-05
Americans with Disabilities Act (ADA) compliant

Dimensions Shower-Hand Shower System, 3505-H321-V-CYL



Note: Dimensions subject to change without notice