



A KOHLER COMPANY

SOUTHHAVEN™ SERIES

SELF-RIMMING KITCHEN SINK 11401

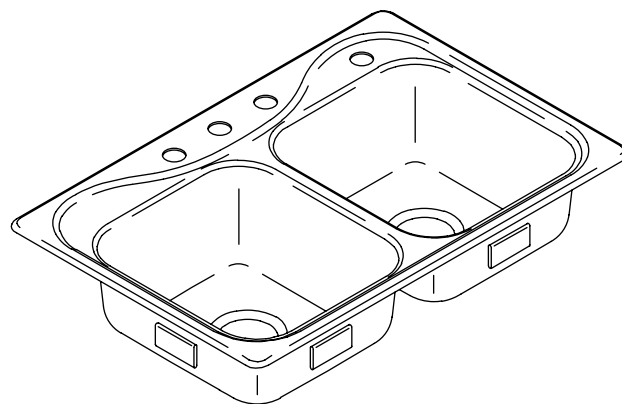
Features

- 21 gauge stainless steel
- Self-rimming; rolled rim
- SilentShield™ sound deadening
- Double basin, ledge back sink
- Satin finish
- 33" (83.8 cm) x 22" (55.9 cm) x 7" (17.8 cm)

Codes/Standards Applicable

Specified model meets or exceeds the following:

- ASME A112.19.3
- IAPMO/UPC
- State of Massachusetts



Colors/Finishes

- NA: None applicable

Specified Model

Model	Description	Faucet Holes	Quantity	Basin Depth	Colors/Finishes
11401-3	Stainless steel double basin sink	3	1	7" (17.8 cm)	☐ NA
11401-4	Stainless steel double basin sink (shown)	4	1	7" (17.8 cm)	☐ NA
11401-5	Stainless steel double basin sink	5	1	7" (17.8 cm)	☐ NA
F11401-3	Stainless steel double basin sink	3	40	7" (17.8 cm)	☐ NA
F11401-4	Stainless steel double basin sink	4	40	7" (17.8 cm)	☐ NA
F11401-5	Stainless steel double basin sink	5	40	7" (17.8 cm)	☐ NA

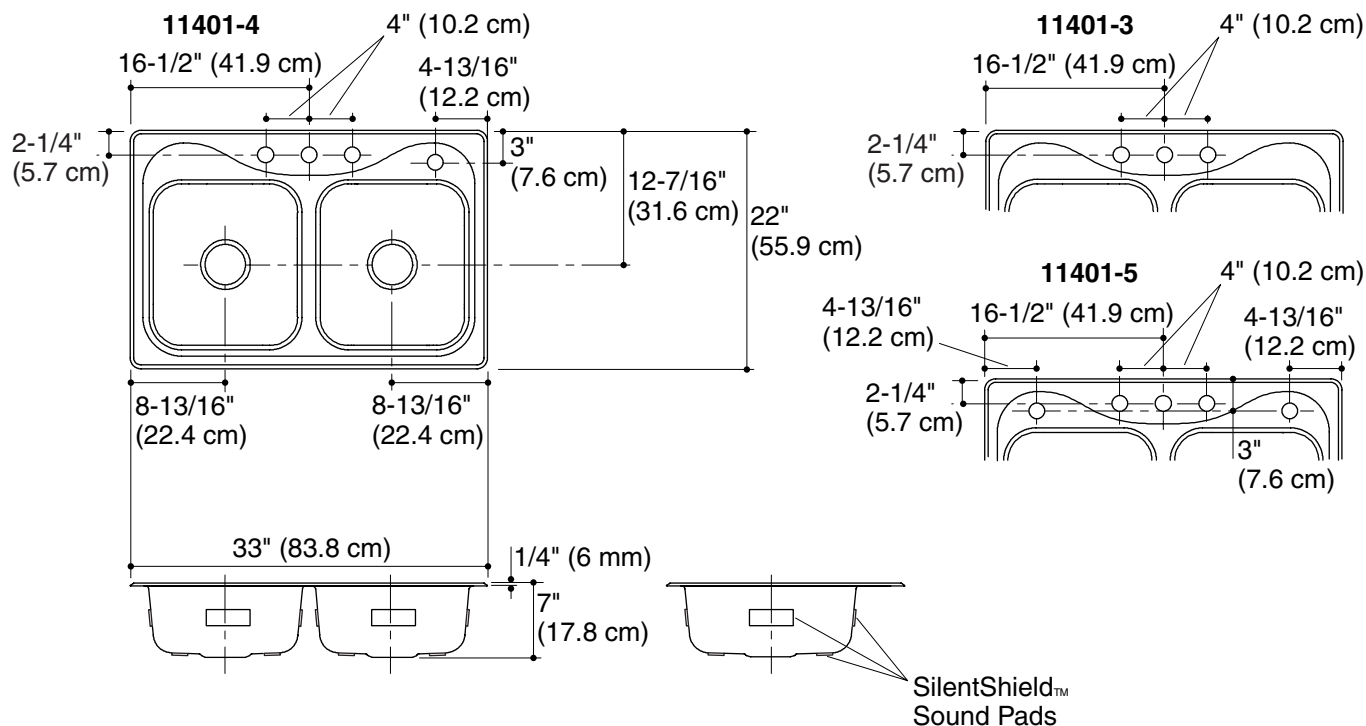
SterlingPlumbing.com

Visit us online for fixture color choices, detailed product information, color photos, installation instructions, care guides, and warranties. Sterling offers additional lines of plumbing products to complement the Sterling product you've chosen. Sign up for the Sterling monthly e-newsletter which showcases our latest product innovations. You may also call our Sterling Plumbing Answer Center from within the USA at 1-888-STERLING in addition to consulting with your local dealer. Sterling. Strong. Professional. Design.

SOUTHAVEN™ SERIES

Technical Information

Fixture*:	cut-out size	basin area
Sink	32-1/2" (82.6 cm) x 21-1/2" (54.6 cm) with 1/2" (1.3 cm) radius corners	14" (35.6 cm) x 15-1/8" (38.4 cm)
Drain holes	3-5/8" (9.2 cm) D.	
Faucet holes	1-7/16" (3.7 cm) D.	
Cut-out template	1032929-7 (available at sterlingplumbing.com)	
* Approximate measurements for comparison only.		



Product Diagram