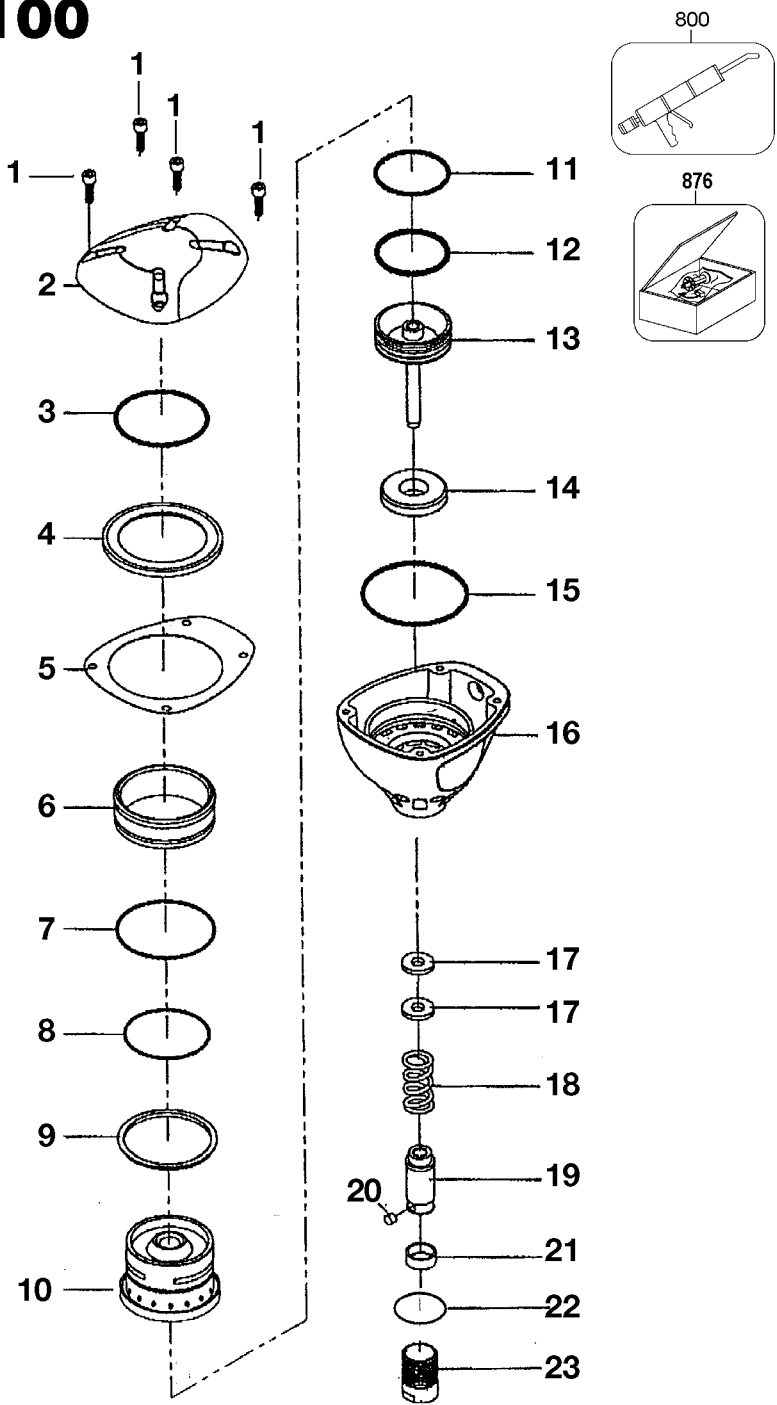


PN100



IP1138-1 REVC 11/00
TO BE USED WITH IP1138-2 AND 120914 OPERATION AND MAINTENANCE MANUAL

Parts List for PN100 Type 0

| Item Number | Part Number | Description | Qty Required |
|-------------|-------------|----------------------|--------------|
| 1 | 174064 | SCREW-SHCS-M5X0.8X18 | 4 |
| 2 | P2020000140 | CAP | 1 |
| 3 | S06A013800 | O-RING | 1 |
| 4 | P2040000300 | VALVE SEAT | 1 |
| 5 | P2020000300 | GASKET | 1 |
| 6 | P2042000500 | ASSEMBLY-CYLINDER | 1 |
| 7 | S06Z003200 | O-RING | 1 |
| 8 | S06Z002700 | SEAL | 1 |
| 9 | P2040000800 | BUMPER-VALVE | 1 |
| 10 | P2042000700 | VALVE | 1 |
| 11 | S06A013100 | O-RING | 1 |
| 12 | S06A022300 | O-RING | 1 |
| 13 | G0201600 | ASSEMBLY-DRIVER/PIST | 1 |
| 14 | P2040001300 | BUMPER | 1 |
| 15 | S06A014300 | SEAL | 1 |
| 16 | P2020000232 | FRAME | 1 |
| 17 | P2045203762 | WASHER | 2 |
| 18 | P2045201762 | SPRING | 1 |
| 19 | G3200200 | NOSE | 1 |
| 20 | P2040003100 | MAGNET | 1 |
| 21 | P2040002900 | RETAINER-MAGNET | 1 |
| 22 | S06S002000 | SEAL | 1 |
| 23 | P2045201862 | GUIDE | 1 |
| 800 | 100653 | LUBE (2CC) | 1 |
| 800 | 100679 | LUBE (1LB.CAN) | 1 |
| 876 | 120963 | GRIP-PN100 LEATHER | 1 |
| 876 | 120964 | WRENCH-PN100 | 1 |

COPYRIGHT© 2005. All Rights Reserved.

Parts list, pricing, and availability subject to change. Please visit www.dewaltservicenet.com for current parts information.

Parts List for PN100 Type 0

| Item Number | Part Number | Description | Qty Required |
|-------------|-------------|----------------------|--------------|
| 876 | 120965 | KIT-PN100 O-RING | 1 |
| 876 | 120966 | NOSE-PN100 FINISH NA | 1 |

COPYRIGHT© 2005. All Rights Reserved.

Parts list, pricing, and availability subject to change. Please visit www.dewaltservicenet.com for current parts information.