

# SPEAKMAN®

## Eyesaver® Faucet SEF-1800-CA-TW

SPECIFICATION



### EYEWASH FEATURES:

- Pull handle activator
- Aerated yellow plastic spray outlets with flip-top dust caps
- 2.87 gpm @30 psi performance

### COMPLIANCE:

- ANSI Z358.1

### FAUCET FEATURES:

- Gooseneck faucet with independently operated eyewash
- Lead-free brass construction
- ¼ turn ceramic cartridge
- ½" male connections for hot & cold inlets
- Adjustable center of 6" to 12"
- Vandal resistant 4" wrist blades handles with color-coded indexes or single handle lever
- 2.2 gpm flow rate

### COMPLIANCE:

- ASME A112.18.1, CSA B125 and CA AB1953

### TMV FEATURES:

- 7 gpm capacity supports most single eye or eye/face wash stations
- Provides 5 gpm cold water bypass in case of hot water or thermostatic element failure
- Inlet Connections: ½" NPT
- Outlet Connection: ½" NPT
- Temperature Range: 65°-95° F
- Maximum Pressure 125 PSI
- Inlet Temperature Hot: 120°-180° F
- Inlet Temperature Cold: 33°-80° F
- Minimum Temperature Differential (from valve set point): 20° F

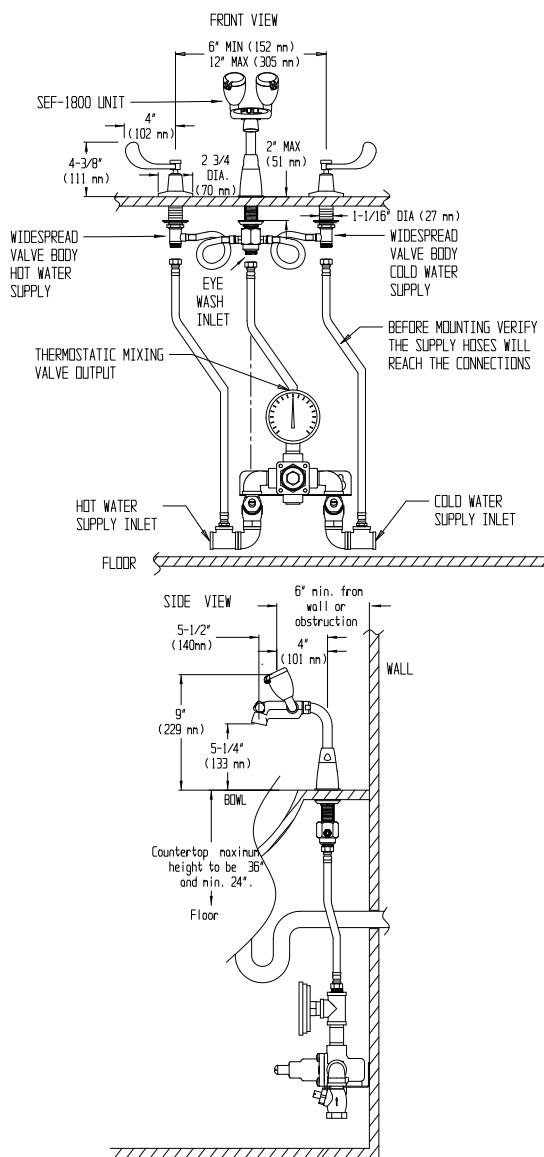
### OPTIONS:

ADD SUFFIX TO MODEL #

- Vandal resistant 0.5 gpm flow control  **-BO** • 6" wrist handles  **-6WH**
- Laminar flow outlet 2.2 gpm  **-LF** • 8" gooseneck spout  **-8**
- Serrated tip with vacuum breaker  **-ST** (not available in lead free option)
- Non-aerated eyewash  **-NA**

### WARRANTY:

- 25 year for ceramic cartridges
- 1 year limited



NOTE: 1. All dimensions are in inches (millimeters) unless otherwise specified and are subject to change without notice.

THIS SPACE FOR ARCHITECT/ENGINEER APPROVAL.

# SPEAKMAN®

400 ANCHOR MILL ROAD | NEW CASTLE, DE 19720  
 P: 800-537-2107 | F: 800-977-2747  
 WWW.SPEAKMANCOMPANY.COM



REVISION DATE: MAY 2012