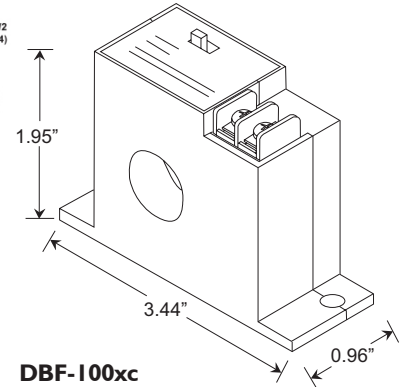
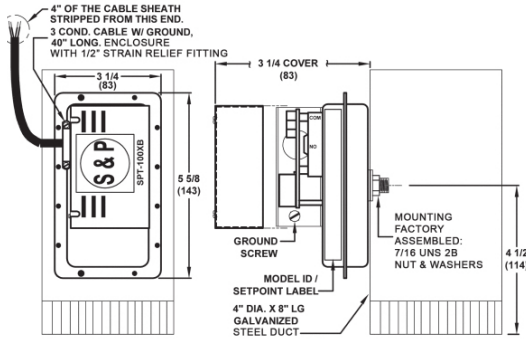
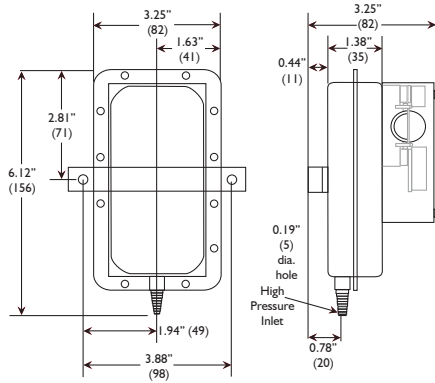


# KIT - DBF-100xp, DBF-100xc and DBM-100xp

(Dryer Boosting Kits)



The World's Leading Producer of  
Air Movement Products  
6393 Powers Avenue  
Jacksonville, Florida 32217-2298  
P: 800.961.7370 F: 800.961.7379  
www.solerpalau-usa.com



## DBF-100xp Clothes Dryer Exhaust Booster Kit with Pressure Sensor Switch

- This Premium Dryer Booster Kit Includes the Following Components:
1. PV-100x Duct Boosting Fan (142 CFM)
  2. Air Pressure Sensing Switch with electronic cycle timing board
  3. Fan Mounting Bracket

## DBM-100xp Clothes Dryer Exhaust Booster Kit with Duct Mounted Pressure Sensor Switch

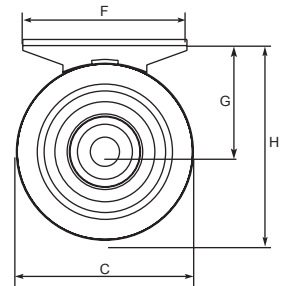
- This Premium Dryer Booster Kit Includes the Following Components:
1. PV-100x Duct Boosting Fan (142 CFM)
  2. Duct Mounted and pre-wired Air Pressure Sensing Switch with electronic cycle timing board
  3. Fan Mounting Bracket

## DBF-100xc Clothes Dryer Exhaust Booster Kit with Current Sensor

- This Premium Dryer Booster Kit Includes the Following Components:
1. PV-100x Duct Boosting Fan (142 CFM)
  2. CS-325 High Current Sensing Switch
  3. Fan Mounting Bracket

### Dimensions inches/mm

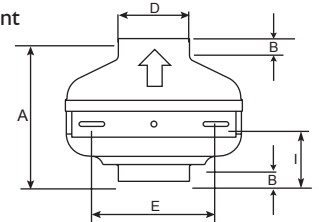
Model	A	B	C	D	E	F	G	H	I	Weight lbs(kgs)
PV-100x	7 5/8 194	1 25	9 1/2 241	3 7/8 98	6 11/16 170	8 7/8 225	6 1/16 154	10 13/16 275	3 1/4 83	7 3.0



### Air Performance

Model No.	Nom. RPM	Volts	Max. Watts	CFM v Static Pressure (SP) Ins. WG								Max. SP	Duct Dia. Ins.	
				0"	0.125"	0.25"	0.375"	0.5"	0.75"	1.0"	1.25"			1.5"
PV-100x	2880	115	84	153	142	130	120	111	96	80	63	34	1.85	4"

For more information contact us at [www.solerpalau-usa.com](http://www.solerpalau-usa.com) or 1.800.961.7370 for additional submittal drawings. Soler & Palau will not be responsible for fabrication changes or errors resulting from customer use of a non-current submittal drawing.



MOTOR DATA					
AMPS	RPM	VOLTS	PH	HZ	ENCLOSURE

ACCESSORIES	1	2	3	4	5	REMARKS

PROJECT: \_\_\_\_\_  
 LOCATION: \_\_\_\_\_  
 FORM NO.: \_\_\_\_\_  
 ENGINEER: \_\_\_\_\_

CONTRACTOR: \_\_\_\_\_  
 REVISION DATE: \_\_\_\_\_  
 SUBMITTED BY: \_\_\_\_\_  
 APPROVED BY: \_\_\_\_\_  
 DATE: \_\_\_\_\_  
 DATE: \_\_\_\_\_