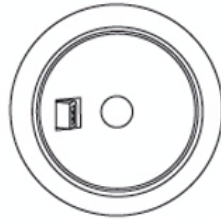


Job Name:		Item Number:	
Specifier Name:		Sales Agency:	
Specifier Contact:		Agency Contact:	
Fixture Type:		Comments:	
Quantity:		Approval:	

**Xenon Disk 24 Degree Beam**



D: 3 1/8" H: 7/8"

**Description**

Ambiance Disk Lighting offers functional and low-profile lighting, while enhancing the appeal of any space. Disk lights easily install as surface mount or recessed for a lower profile. Optional trims are also available for a variety of lighting effects and glare reduction. Ambiance Disk Lights should be used with a Class II transformer, or a Class I transformer with our Fused Plug (9488), track, and cable.

**Specifications**

Item Number	9485-12
Finish	Black
Dimensions	D: 3 1/8" H: 7/8"
Wire / Cord	36" (color/Black)
Mounting Proc.	Dual Mount
Beam Spread	NFL - Narrow Flood 24 °
Safety Listing	UL Listed for Damp Locations cUL Listed for Damp Locations cETL Listed for Damp Locations
Warranty	1-Year Warranty

**Optional Lamping**

- (9774) 18w 12V Clear T5 Wedge Xenon
- (9775) 18w 24V Clear T5 Wedge Xenon
- (9776) 8w 12V Clear T5 Wedge Incandescent
- (9777) 12w 12V Clear T5 Wedge Incandescent
- (9778) 18w 12V Clear T5 Wedge Incandescent

**Instruction Sheets**

- English (HC-207)

**Shipping Information:**

Package Type	Product #	Quantity	UPC	Length	Width	Height	Cube	Weight	UPS Ship
Individual	9485-12	1	785652948527	7	6	1	0.024	0.2	Yes
Master Pack		5	10785652948524	6	5.58	6	0.116	1.1	Yes
Shipping Master		100	20785652948521	30.25	12.5	12.25	2.681	20	Yes

**Photometric Diagram:**

9485 Photometrics using 9774 T5 Wedge Base Lamp

Distance from Source	Diameter in Feet	Footcandles
1.5'	.6	267
2'	.9	150
3'	1.3	67
4'	1.7	38
6'	2.6	17
8'	3.4	9
10'	4.3	6

9858 Photometrics using 9774 T5 Wedge Base Lamp

Distance from Source	Diameter in Feet	Footcandles
1.5'	1.1	68
2'	1.5	42
3'	2.2	19
4'	2.9	11
6'	4.0	5
8'	5.8	3
10'	7.3	2

**Component Diagram:**



**STEP 1**

**Choose Disks & Lamps**  
Select beam spread, number of disks, desired housing color and lamps based on the requirements of your project.



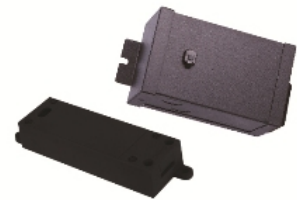
**STEP 2**

**Select Optional Trims**  
Order any desired trims and diffusers for glare control or lamp coverage.



**STEP 3**

**Choose Wiring Accessories**  
Disk lights are supplied with a cord and plug. Additional accessories are available for larger installations or connecting to existing systems.



**STEP 4**

**Select Transformers**  
Multiply the watts consumed per lamp by the number of lamps to determine transformer size. Use transformer 98175 to easily wire multiple 9858 disks using included plug output cords.



**AMBIANCE**  
Lighting Systems

7400 Linder Ave. | Skokie, Illinois 60077 | 800-347-5483  
© 2013 Sea Gull Lighting LLC, a Generation Brands Company.