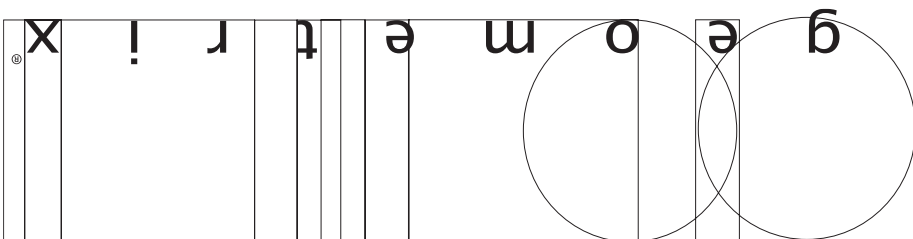


Important: Label on back contains important information on your crystal color. Please save in case you ever need to order matching crystal.

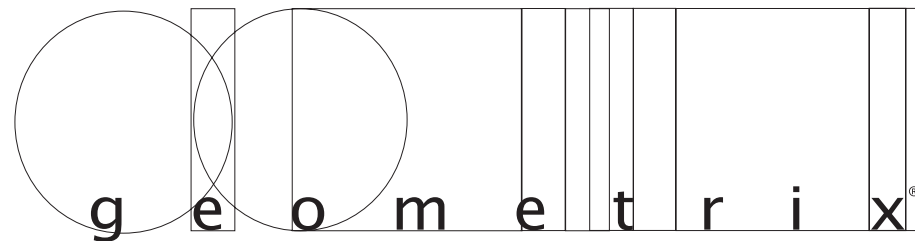
Trim Diagram
Vertex® Wall Bracket VRW0508**



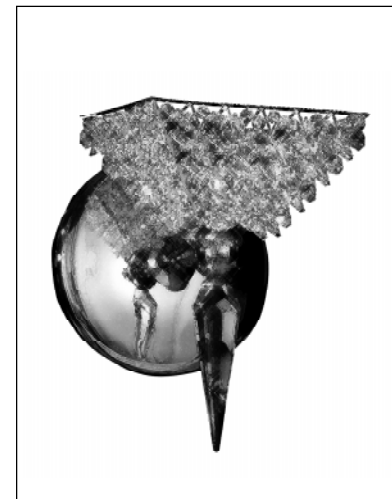
Schonbek Worldwide Lighting Inc., 61 Industrial Blvd., Plattsburgh NY 12901-1908
Tel: 800.836.1892 or 518.563.7500 www.schonbek.com

© 2005 SCHONBEK WORLDWIDE LIGHTING INC., A. SCHONBEK & CO. LTD. WORLDWIDE COPYRIGHT RESERVED

US PATENT #D522,683, #D522,687, #D532,144, #7,347,594 & #7,101,065 / CANADIAN DESIGN © #118322



Trim Diagram
Vertex® Wall Bracket VRW0508**



1 Light
5 x 7 x 7"

Geometrix™ is designed by Schonbek with Strass® crystal by Swarovski.




This design is the proprietary trade dress/trademark of Schonbek Worldwide Lighting Inc

Please save your trim diagram for future reference.


IMPORTANT: Label on back contains important information on your crystal color. Please save in case you ever need to order matching crystal.



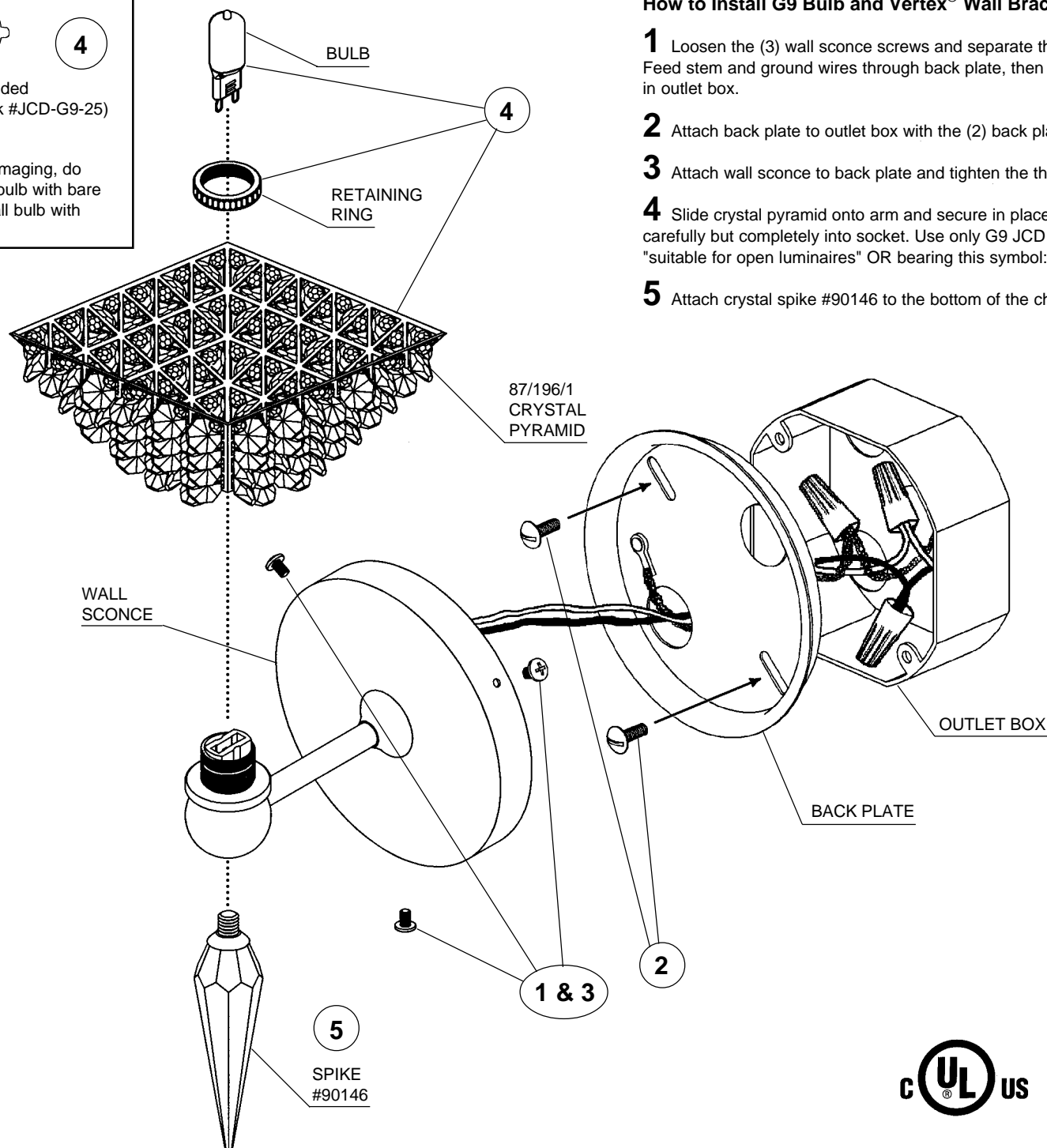


4


1 - G9 JCD
25 Watts Recommended
(Supplied - Schonbek #JCD-G9-25)
60 Watts Max



To avoid damaging, do NOT touch bulb with bare hands. Install bulb with clean cloth or tissue.

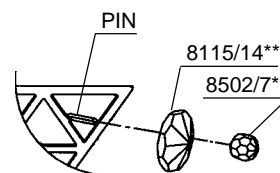


How to Install G9 Bulb and Vertex® Wall Bracket:

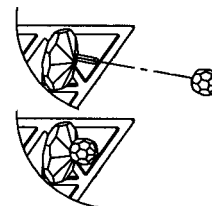
- 1** Loosen the (3) wall sconce screws and separate the back plate from the wall sconce. Feed stem and ground wires through back plate, then attach to power wires and ground wire in outlet box.
- 2** Attach back plate to outlet box with the (2) back plate screws supplied.
- 3** Attach wall sconce to back plate and tighten the three screws loosened previously.
- 4** Slide crystal pyramid onto arm and secure in place with the retaining ring. Plug bulbs carefully but completely into socket. Use only G9 JCD bulbs. Only use bulbs marked "suitable for open luminaires" OR bearing this symbol: 
- 5** Attach crystal spike #90146 to the bottom of the chrome ball under the crystal pyramid.

REPLACING CRYSTAL:

If a crystal breaks, you'll see a bare pin sticking out of a hole in the framework.



A Straighten pin outward.



B Slide crystal octagon and then bead onto pin.



C Bend back into frame to secure crystal in place.