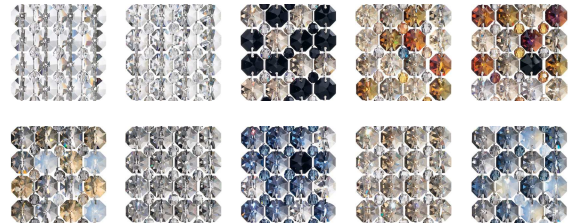


## GEOMETRIX VERTEX - SCHONBEK VRW2808

One of our more cutting-edge designs, Vertex™ draws its energy from ancient pyramids, which celebrated the power of the sun. This triangular pattern marks the stainless steel skin of the structures, bedazzled by colored crystal spikes or ribbons of round gems. The pyramid-shaped chandeliers, culminating in a thick stalactite, are dramatic and geometric.

### OPTIONS



Spectra Crystal (A), CRYSTALS FROM SWAROVSKI (S), CRYSTALS FROM SWAROVSKI (JAG), CRYSTALS FROM SWAROVSKI (OCE), CRYSTALS FROM SWAROVSKI (BOA), CRYSTALS FROM SWAROVSKI (TRA), CRYSTALS FROM SWAROVSKI (BLA), CRYSTALS FROM SWAROVSKI (BUL), CRYSTALS FROM SWAROVSKI (TK), Azurite Crystals from Swarovski (AZU)



-401

### MORE GEOMETRIX VERTEX

VC0405	VC3S42	VC6S42
VCR031	VCR032	VCR033
VCR431	VCR432	VCR433
VCR451	VCR452	VCR453
VP1811	VP2413	VR0306
VR0607	VR0708	VRW0508
VRW2108	VR2524	

- [SWAROVSKI-LIGHTING.COM/SCHONBEK](http://SWAROVSKI-LIGHTING.COM/SCHONBEK)
- VIEW
- CONNECT
- WHERE TO BUY



### SPECIFICATIONS

Width/Length:	28in / 71cm
Height:	8in / 20cm
Depth/Extension:	6in / 15cm
Hang Weight:	8lbs / 3.6kg
Tier Count:	1
Light Source:	Halogen
Bulb Count:	4
Bulb Info:	(4) G9, 60 MAX, G9*

\*Bulb Included \*\*Bulb Not Included



SCHONBEK®