

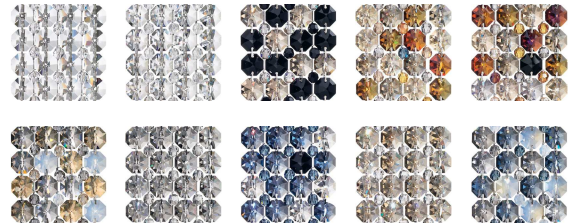
VERTEX 4 - SCHONBEK

VCR453

One of our more cutting-edge designs, Vertex™ draws its energy from ancient pyramids, which celebrated the power of the sun. This triangular pattern marks the stainless steel skin of the structures, bedazzled by colored crystal spikes or ribbons of round gems. The pyramid-shaped chandeliers, culminating in a thick stalactite, are dramatic and geometric.



OPTIONS



Spectra Crystal (A), CRYSTALS FROM SWAROVSKI (S), CRYSTALS FROM SWAROVSKI (JAG), CRYSTALS FROM SWAROVSKI (OCE), CRYSTALS FROM SWAROVSKI (BOA), CRYSTALS FROM SWAROVSKI (TRA), CRYSTALS FROM SWAROVSKI (BLA), CRYSTALS FROM SWAROVSKI (BUL), CRYSTALS FROM SWAROVSKI (TK), Azurite Crystals from Swarovski (AZU)



-401

MORE VERTEX 4

VC0405	VC3S42	VC6S42
VCR031	VCR032	VCR033
VCR431	VCR432	VCR433
VCR451	VCR452	VP1811
VP2413	VR0306	VR0607
VR0708	VRW0508	VRW2108
VRW2808	VR2524	

SPECIFICATIONS

Width/Length:	4.5in / 11cm
↕ Height:	2in / 5cm
📏 Hang Weight:	1lbs / .5kg
Tier Count:	1
Light Source:	Halogen
Bulb Count:	1
Bulb Info:	(1) GU5.3, 50 MAX, MR16*
Notes:	Requires Low Voltage Mounting Hardware (Sold Separately)

\*Bulb Included \*\*Bulb Not Included

- [SWAROVSKI-LIGHTING.COM/SCHONBEK](http://SWAROVSKI-LIGHTING.COM/SCHONBEK)
- VIEW
- CONNECT
- WHERE TO BUY



SCHONBEK®