

SWAROVSKI

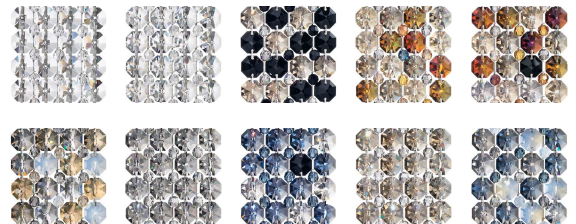
L I G H T I N G



GEOMETRIX VERTEX - SCHONBEK VC0405

One of our more cutting-edge designs, Vertex™ draws its energy from ancient pyramids, which celebrated the power of the sun. This triangular pattern marks the stainless steel skin of the structures, bedazzled by colored crystal spikes or ribbons of round gems. The pyramid-shaped chandeliers, culminating in a thick stalactite, are dramatic and geometric.

OPTIONS



Spectra Crystal (A), CRYSTALS FROM SWAROVSKI (S), CRYSTALS FROM SWAROVSKI (JAG), CRYSTALS FROM SWAROVSKI (OCE), CRYSTALS FROM SWAROVSKI (BOA), CRYSTALS FROM SWAROVSKI (TRA), CRYSTALS FROM SWAROVSKI (BLA), CRYSTALS FROM SWAROVSKI (BUL), CRYSTALS FROM SWAROVSKI (TK), Azurite Crystals from Swarovski (AZU)



-401

MORE GEOMETRIX VERTEX

VC3S42	VC6S42	VCR031
VCR032	VCR033	VCR431
VCR432	VCR433	VCR451
VCR452	VCR453	VP1811
VP2413	VR0306	VR0607
VR0708	VRW0508	VRW2108
VRW2808	VR2524	

SPECIFICATIONS

Width/Length:	4in / 10cm
Height:	4in / 10cm
Chain Length:	72in / 183cm
Hang Weight:	1lbs / .5kg
Tier Count:	1
Light Source:	Halogen
Bulb Count:	1
Bulb Info:	(1) GU5.3, 50 MAX, MR16*
Notes:	Requires Low Voltage Mounting Hardware (Sold Separately)

*Bulb Included **Bulb Not Included

- SWAROVSKI-LIGHTING.COM/SCHONBEK
- [VIEW](#)
- [CONNECT](#)
- [WHERE TO BUY](#)



SCHONBEK®