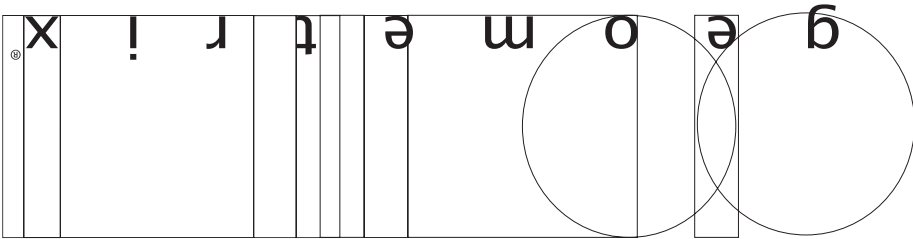




Trim Diagram  
Vertex® Pendant VC0405\*\*

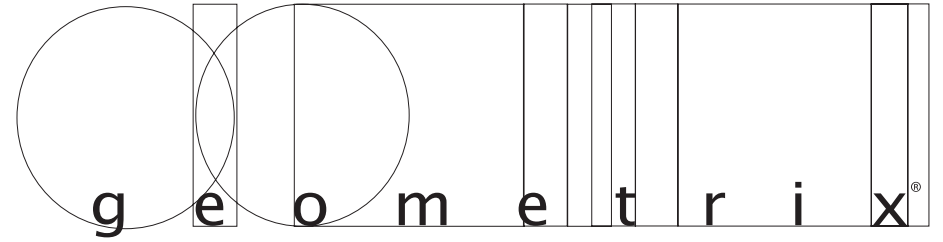
Important: Label on back contains important information on your crystal color. Please save in case you ever need to order matching crystal.



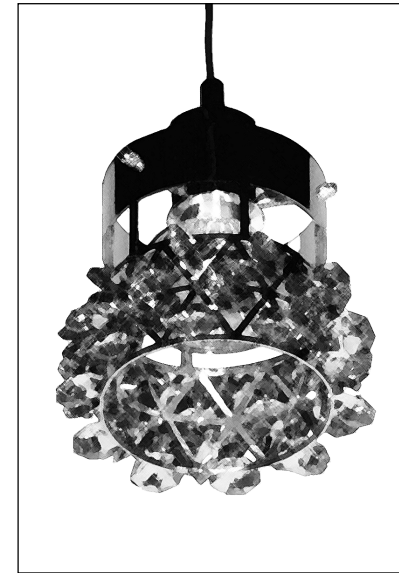
Schonbek Worldwide Lighting Inc., 61 Industrial Blvd., Plattsburgh NY 12901-1908  
Tel: 800.836.1892 or 518.563.7500 [www.schonbek.com](http://www.schonbek.com)

© 2005 SCHONBEK WORLDWIDE LIGHTING INC., A. SCHONBEK & CO. LTD. WORLDWIDE COPYRIGHT RESERVED

US PATENT #D522,169, #D522,687, #7,347,594 & #7,101,065



Trim Diagram  
Vertex® Pendant VC0405\*\*



1 Light  
4" x 4"

Geometrix<sup>®</sup> is designed by Schonbek with Strass<sup>®</sup> crystal by Swarovski.

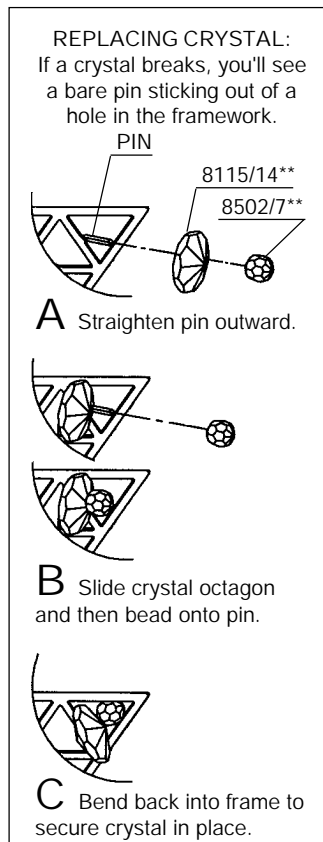
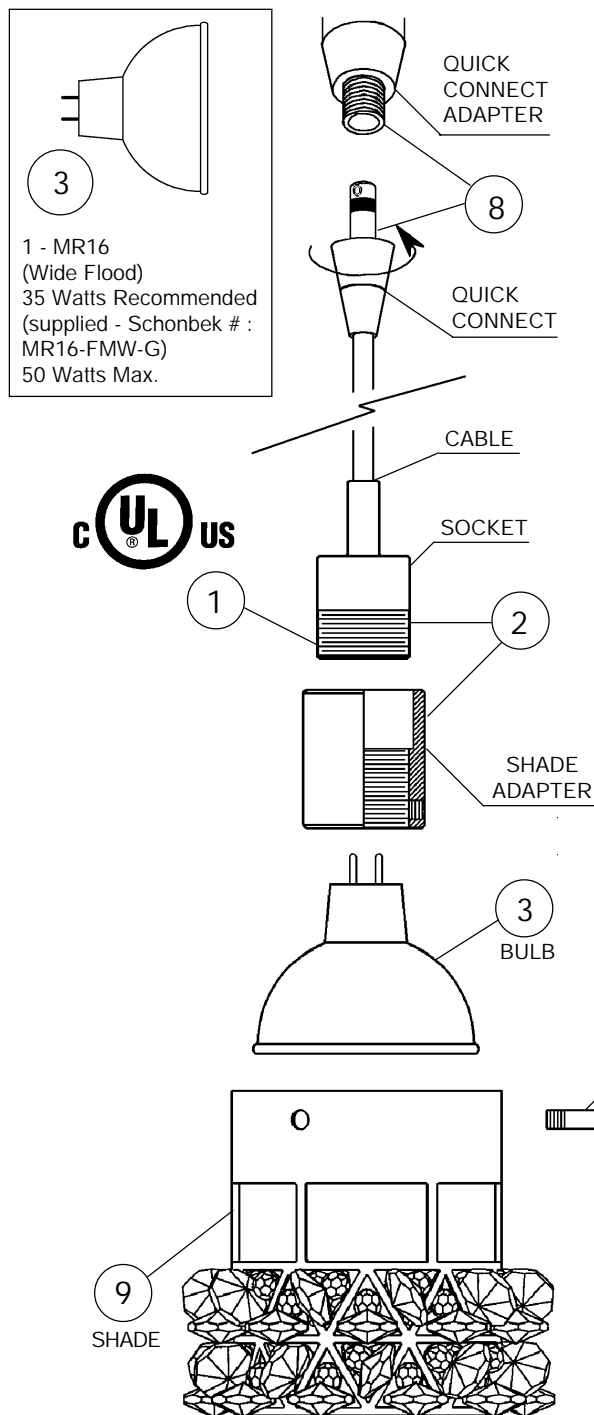


This design is the proprietary trade dress/trademark of Schonbek Worldwide Lighting Inc

Please save your trim diagram for future reference.

IMPORTANT: Label on back contains important information on your crystal color. Please save in case you ever need to order matching crystal.





## How to Install MR16 Bulb and Vertex® Pendant:

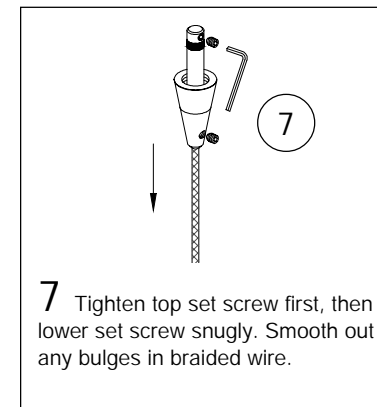
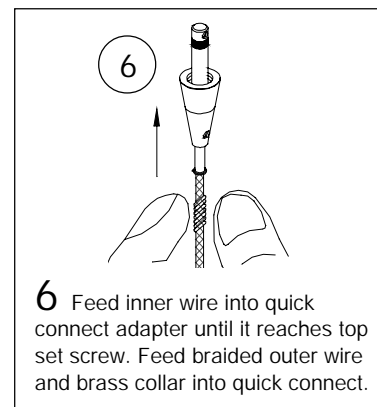
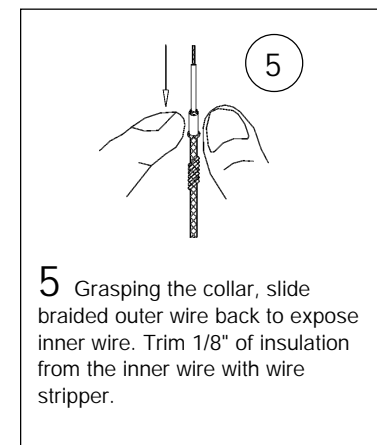
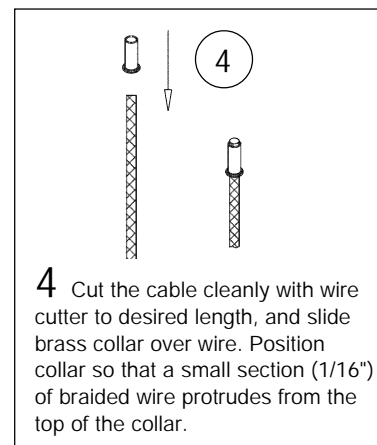
Pendants may be mounted to monorail systems, monopoints or line voltage track by coupling to the quick connect transformer adapter. Attached to the socket is a cable that may be cut on site during installation to any length (see instructions below).

1 This socket ships with two retaining rings. This pendant does not require any retaining rings. Remove both retaining rings.

2 Tighten the shade adapter completely onto the socket. NOTE: The inside threads of the shade adapter must be facing down as shown or the bulb will not plug into the socket.

3 Plug bulb carefully but completely into socket. Use only an MR16 glass covered lamp bulb.

## How to Shorten the Cable:



8 Screw quick connect into quick connect adapter until it seats. If you adjust the orientation of the pendant, be careful not to loosen the connection.

9 Position the shade over the adapter and line holes up for the thumb screws. Secure shade in place by carefully tightening the three (3) thumb screws provided.