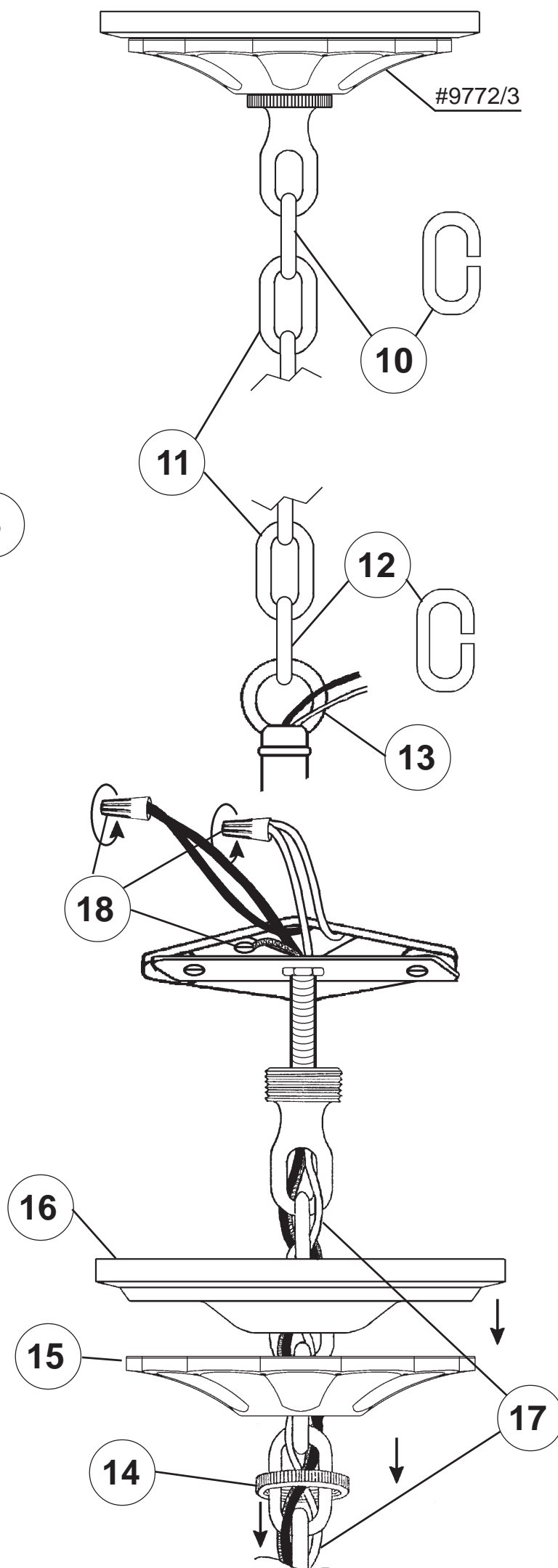
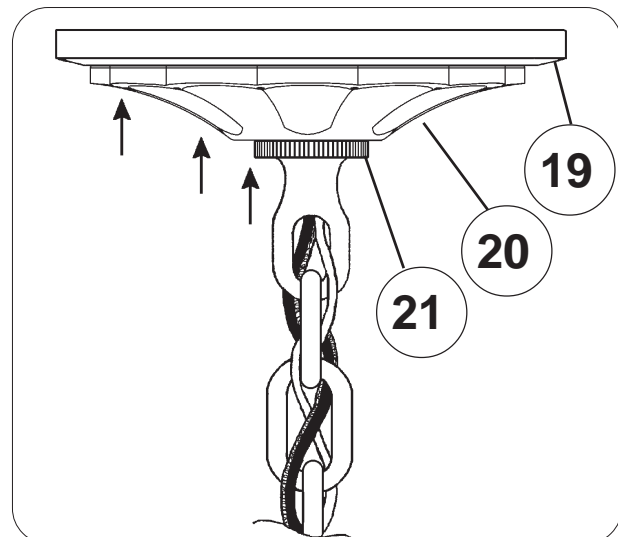
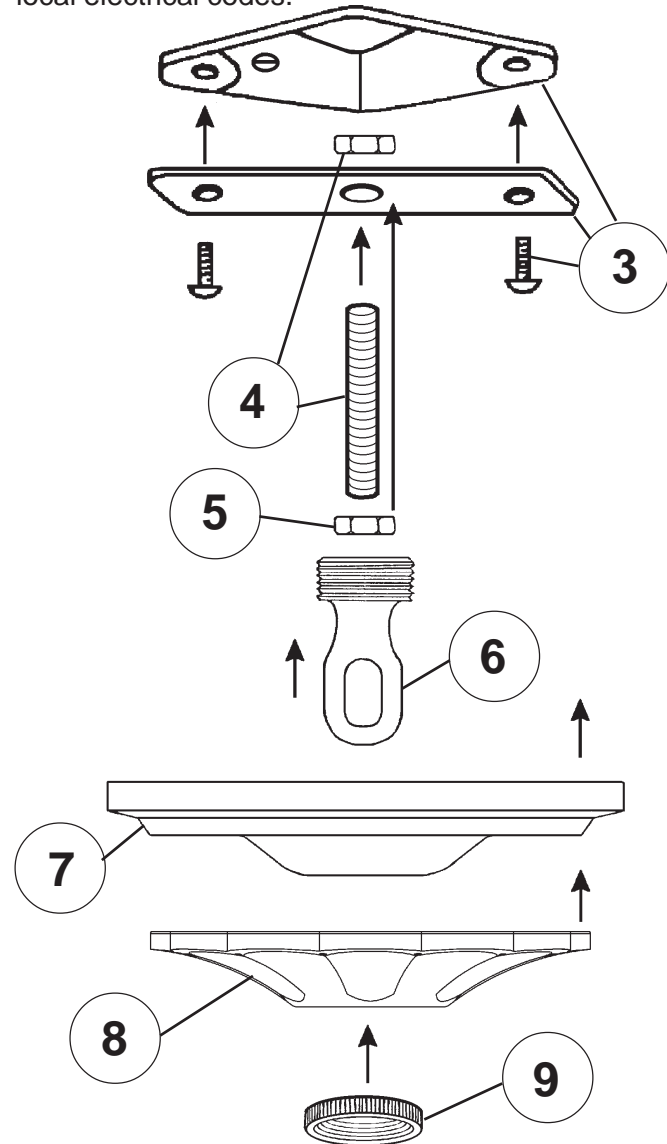


Instructions for electrician
STEPS 2 - 21

2 **WARNING:**

Electrical Danger **Turn Power Off**

All electrical components must be installed by a licensed electrician in accordance with the National Electric Code and the appropriate local electrical codes.



CHANDELIER 1246- _____
(Finish Option) (Trim Option)
TRIM DIAGRAM



6 + 1 Lights
Diameter: 21"
Body Length: 22-1/2"
Hanging Weight: 13 lbs.

T HIS DESIGN IS THE PROPRIETARY TRADE DRESS/TRADE MARK OF SWAROVSKI LIGHTING, LTD.

SCHONBEK®

See diagram on back page
Follow steps in exact order
Save this trim diagram for future reference

1 **IMPORTANT**
Person who opens carton should record the following information for future service.

CODE # _____	Four-digit number on outside of carton.
PACKER # _____	See crystal package label.
ORDER # _____	See crystal package label.



Instructions for crystal trimming

STEPS 22 - 33

22 Slide rosettes with flat side facing towards you onto the screws and secure with balls provided.

23 You will need 6 - B10
25 Watts Recommended
60 Watts Max

You will need 1 - G16-1/2
25 Watts Recommended
60 Watts Max

Install bulbs and be sure to test fixture BEFORE trimming.

