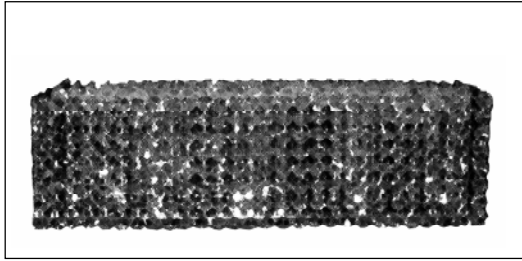
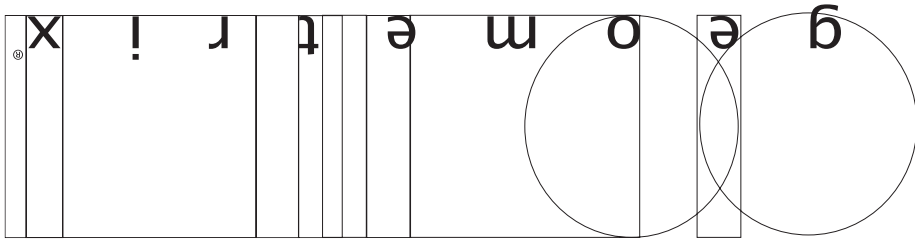


Important: Label on back contains important information on your crystal color. Please save in case you ever need to order matching crystal.



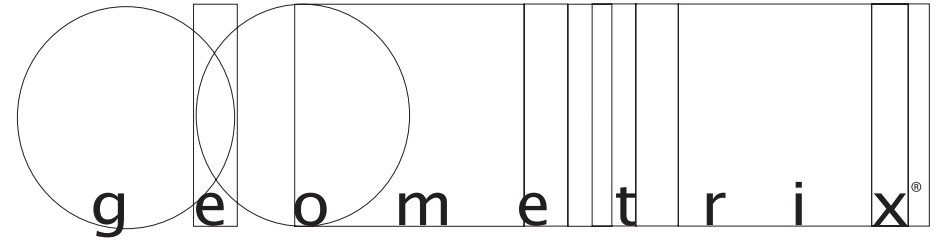
Trim Diagram
Matrix™ Wall Sconce MTW1805A



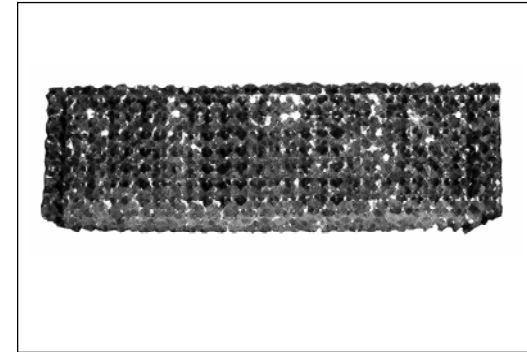
Schonbek Worldwide Lighting Inc., 61 Industrial Blvd., Plattsburgh NY 12901-1908
Tel: 800.836.1892 or 518.563.7500 www.schonbek.com

© 2004 SCHONBEK WORLDWIDE LIGHTING INC., A. SCHONBEK & CO. LTD. WORLDWIDE COPYRIGHT RESERVED

US PATENT 5,144,541 & #D523,579



Trim Diagram
Matrix™ Wall Sconce MTW1805A



3 Lights
Diameter: 17½x5", extends 5"

Geometrix™ is designed by Schonbek with Swarovski Spectra® crystal.



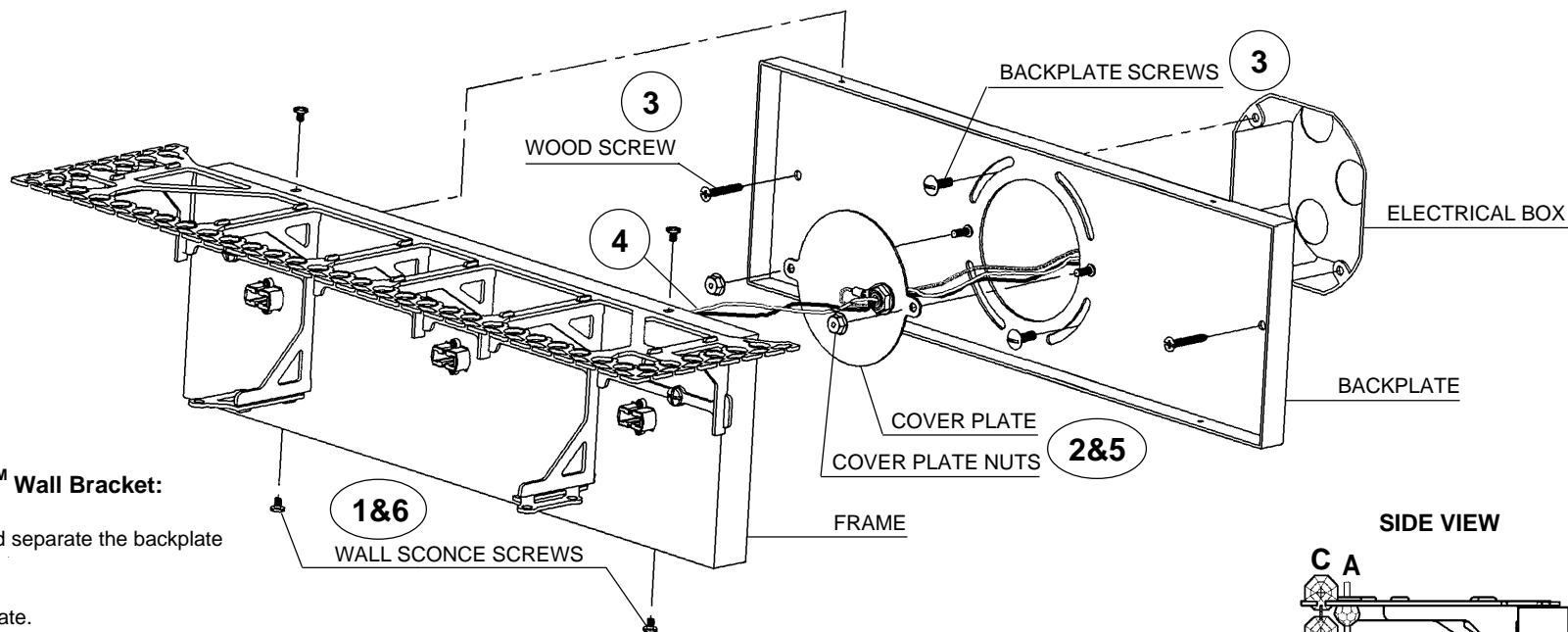
This design is the proprietary trade dress/trademark of Schonbek Worldwide Lighting Inc.

Please save your trim diagram for future reference.

IMPORTANT: Label on back contains important information on your crystal. Please save in case you ever need to order matching crystal.



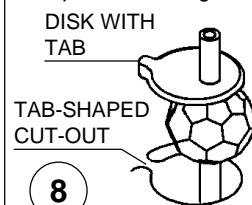
3 - G9 JCD
25 Watts Recommended
(supplied - Schonbek #: JCD-G9-25)
60 Watts Max.



How to Install G9 Bulb and Matrix™ Wall Bracket:

- 1** Loosen the (4) wall sconce screws and separate the backplate from the wall sconce.
- 2** Remove cover plate nuts and cover plate.
- 3** Attach backplate to outlet box with the (2) backplate screws (not supplied). Level and install wood screws.
- 4** Feed stem and ground wires through backplate, then attach to power wires and ground wire in outlet box.
- 5** Reattach cover plate and secure with nuts.
- 6** Attach frame to backplate and tighten the (4) screws loosened previously.
- 7** Plug bulbs carefully but completely into socket. Use only G9 JCD bulbs. Only use bulbs marked "suitable for open luminaires" OR bearing this symbol:
- 8** Hang A bead chains first, following the Crystal Color Map. Drop strands of crystal beads through slots in top grid.
- 9** Grasp C chain of crystal by the top crystal. Slip the chain through side opening of the grid slit. It will nest into position between the top and second crystal.

Above top crystal bead in chain is a disk with tab. Make sure the tab seats firmly and lays flat in tab-shaped cut-out in grid.



SIDE VIEW

