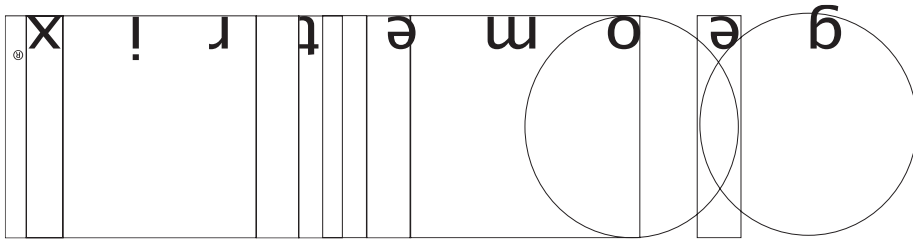


Important: Label on back contains important information on your crystal color. Please save in case you ever need to order matching crystal.

Trim Diagram
Matrix MT0303**

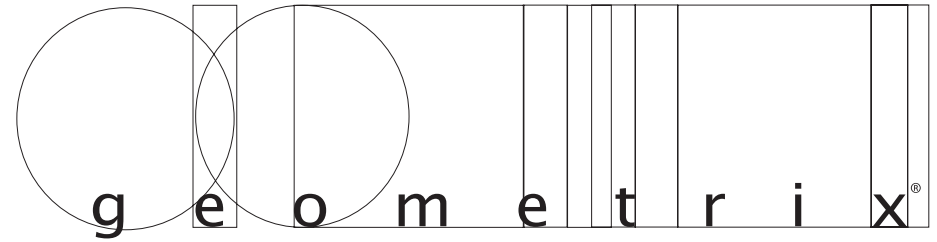


SCHONBEK
BEYOND LIGHTING®

Schonbek Worldwide Lighting Inc., 61 Industrial Blvd., Plattsburgh NY 12901-1908
Tel: 800.836.1892 or 518.563.7500 www.schonbek.com

© 2004 SCHONBEK WORLDWIDE LIGHTING INC., A. SCHONBEK & CO. LTD. WORLDWIDE COPYRIGHT RESERVED

US PATENT 6,712,490 B2 & #D523,579



Trim Diagram
Matrix Pendant MT0303**



1 Light
3 x 3 x 3"

Geometrix™ is designed by Schonbek with Strass® crystal by Swarovski.



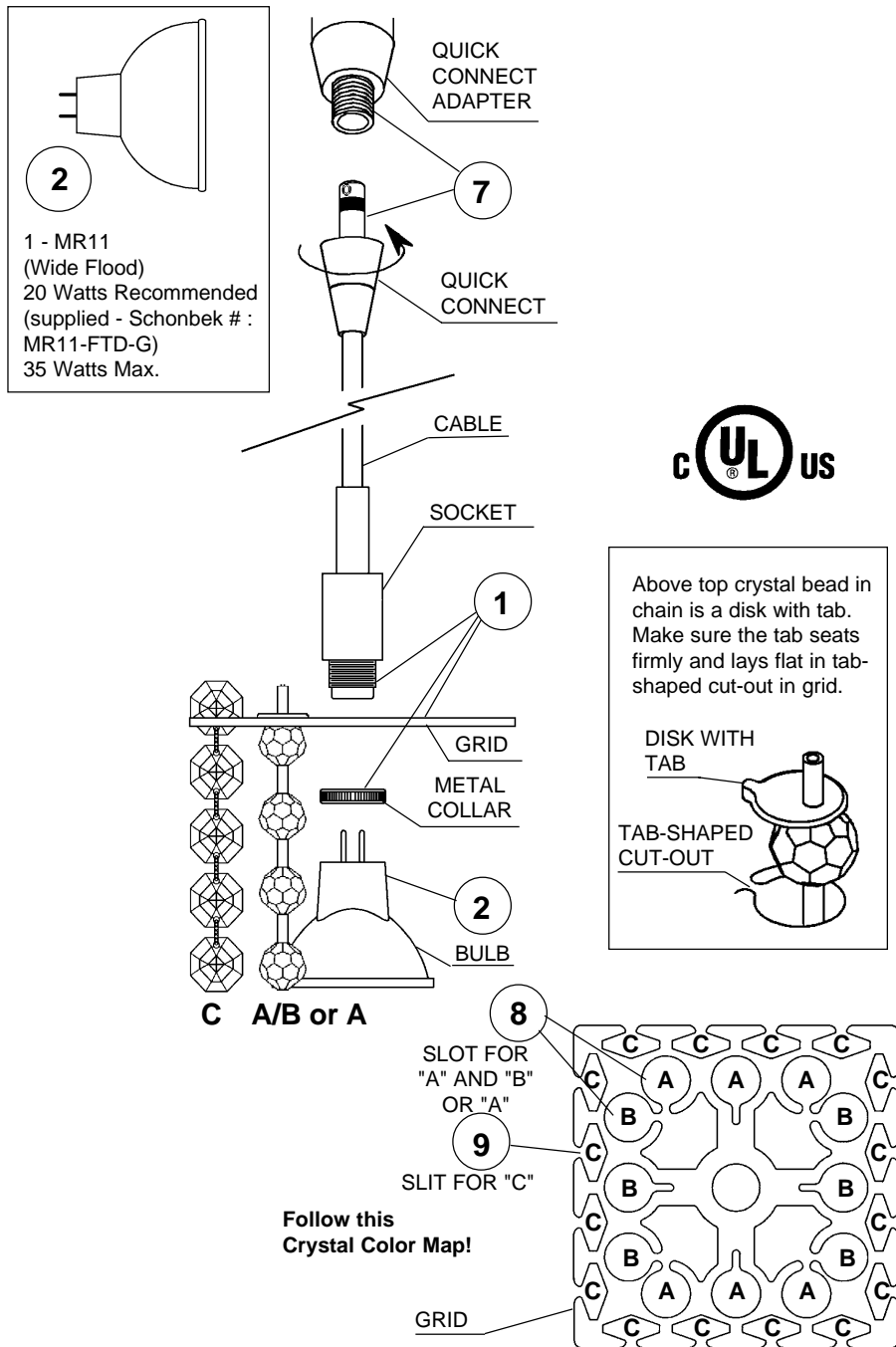
This design is the proprietary trade dress/trademark of Schonbek Worldwide Lighting Inc

Please save your trim diagram for future reference.

IMPORTANT: Label on back contains important information on your crystal color. Please save in case you ever need to order matching crystal.



SCHONBEK
BEYOND LIGHTING®



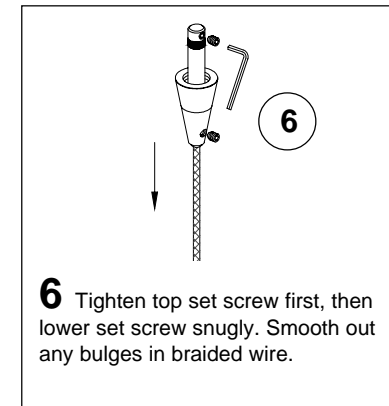
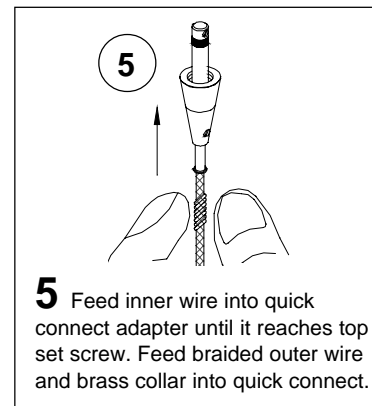
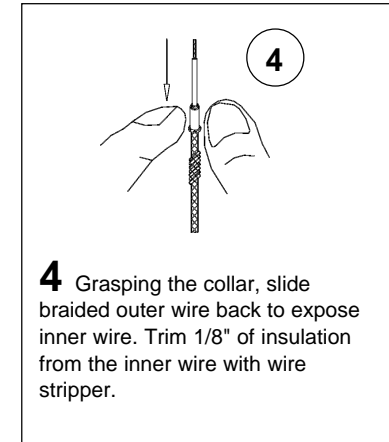
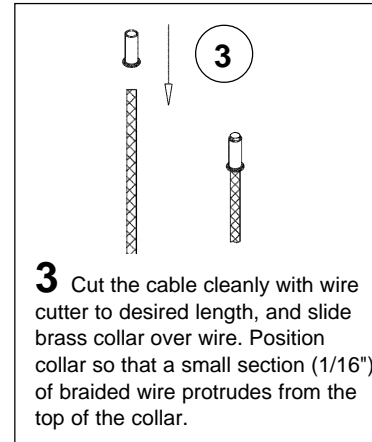
How to Install MR11 Bulb and Matrix™ Pendant:

Pendants may be mounted to monorail systems, monopoints or line voltage track by coupling to the quick connect transformer adapter. Attached to the socket is a cable that may be cut on site during installation to any length (see instructions below).

1 Position the pendant grid against the socket and secure in place by screwing the metal collar onto the socket.

2 Plug bulb carefully but completely into socket. Use only an MR11 glass covered lamp bulb.

How to Shorten the Cable:



7 Screw quick connect into quick connect adapter until it seats. If you adjust the orientation of the pendant, be careful not to loosen the connection.

8 A For Standard Color trimsets: Hang A and B bead chains first, following the Crystal Color Map. Drop strands of crystal beads through slots in top grid. Make sure to follow A - B pattern shown.

B For Premium Color trimsets: Hang A bead chains first, following the Crystal Color Map. Drop strands of crystal beads through slots in top grid.

9 Grasp C chain of crystal by the top crystal. Slip the chain through side opening of the grid slit. It will nest into position between the top and second crystal.