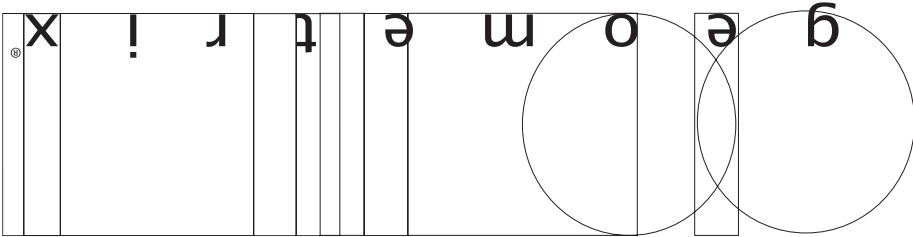


Important: Label on back contains important information on your crystal color. Please save in case you ever need to order matching crystal.

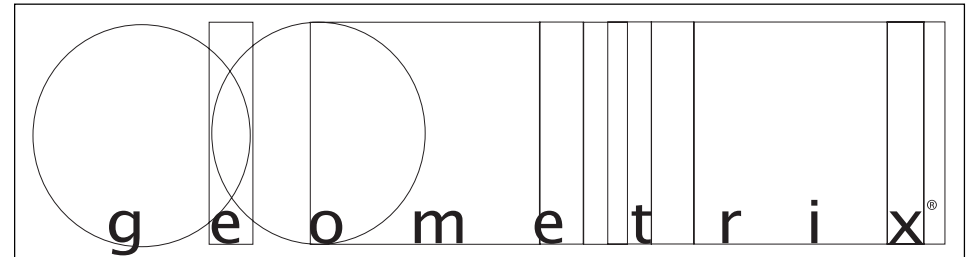
Trim Diagram
Matrix Pendant MC0305A



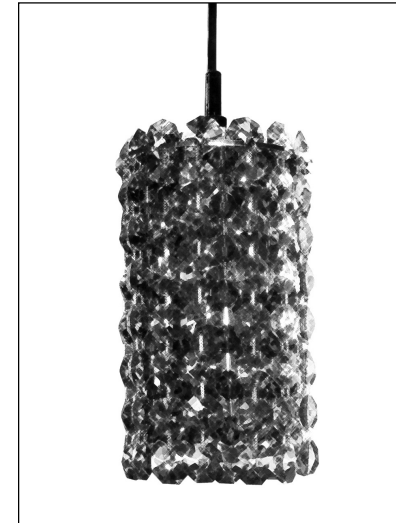
Schonbek Worldwide Lighting Inc., 61 Industrial Blvd., Plattsburgh NY 12901-1908
Tel: 800.836.1892 or 518.563.7500 www.schonbek.com

© 2005 SCHONBEK WORLDWIDE LIGHTING INC., A. SCHONBEK & CO. LTD. WORLDWIDE COPYRIGHT RESERVED

US PATENT 5,144,541 & #D532,169 / CANADIAN DESIGN © #116859



Trim Diagram
Matrix Pendant MC0305A



1 Light
3" x 5"

Geometrix™ is designed by Schonbek with Swarovski Spectra® crystal.

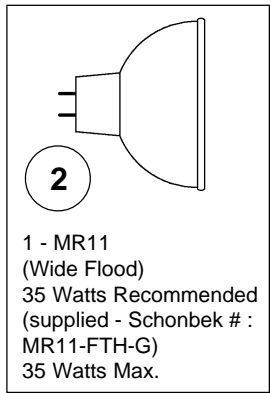


This design is the proprietary trade dress/trademark of Schonbek Worldwide Lighting Inc.

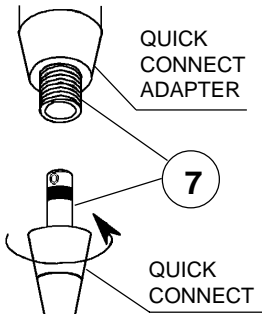
Please save your trim diagram for future reference.

IMPORTANT: Label on back contains important information on your crystal. Please save in case you ever need to order matching crystal.





1 - MR11
(Wide Flood)
35 Watts Recommended
(supplied - Schonbek #: MR11-FTH-G)
35 Watts Max.

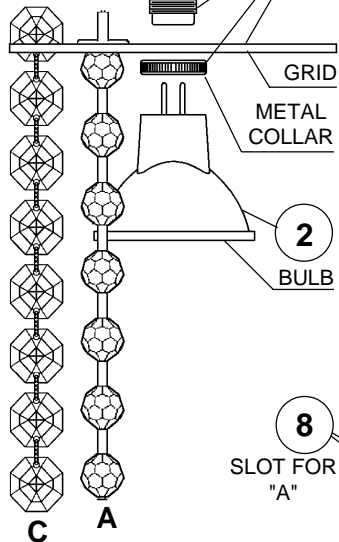


QUICK
CONNECT
ADAPTER

QUICK
CONNECT

CABLE

SOCKET



Above top crystal bead in chain is a disk with tab. Make sure the tab seats firmly and lays flat in tab-shaped cut-out in grid.

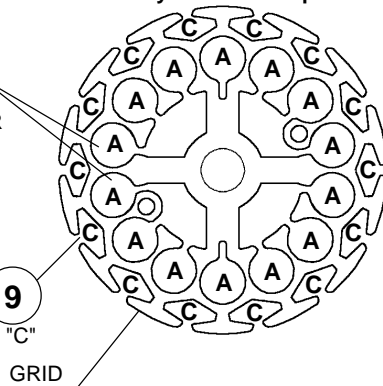
DISK WITH
TAB

TAB-SHAPED
CUT-OUT

Follow this
Crystal Color Map!

8
SLOT FOR
"A"

9
SLIT FOR "C"



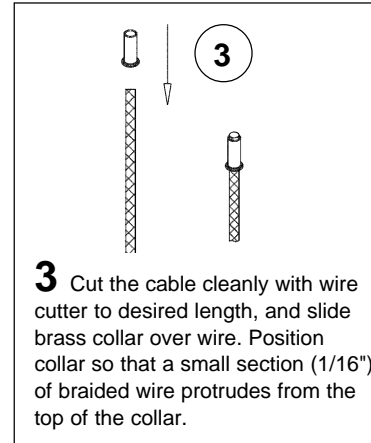
GRID

How to Install MR11 Bulb and Matrix™ Pendant:

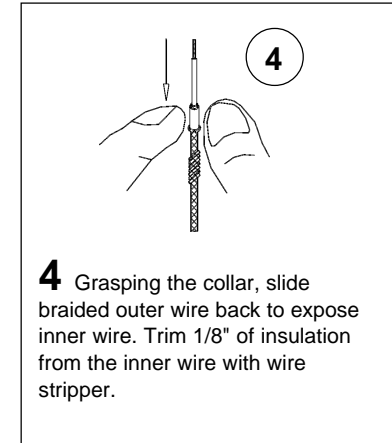
Pendants may be mounted to monorail systems, monopoints or line voltage track by coupling to the quick connect transformer adapter. Attached to the socket is a cable that may be cut on site during installation to any length (see instructions below).

- 1 Position the pendant grid against the socket and secure in place by screwing the metal collar onto the socket.
- 2 Plug bulb carefully but completely into socket. Use only an MR11 glass covered lamp bulb.

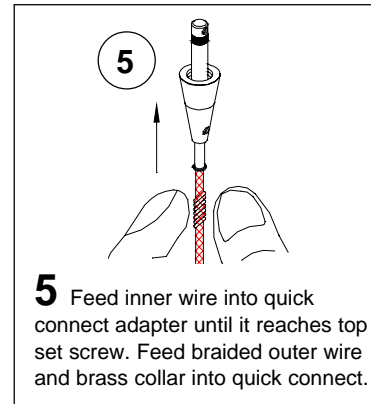
How to Shorten the Cable:



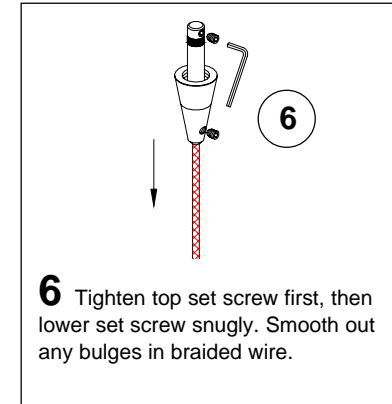
- 3 Cut the cable cleanly with wire cutter to desired length, and slide brass collar over wire. Position collar so that a small section (1/16") of braided wire protrudes from the top of the collar.



- 4 Grasping the collar, slide braided outer wire back to expose inner wire. Trim 1/8" of insulation from the inner wire with wire stripper.



- 5 Feed inner wire into quick connect adapter until it reaches top set screw. Feed braided outer wire and brass collar into quick connect.



- 6 Tighten top set screw first, then lower set screw snugly. Smooth out any bulges in braided wire.

- 7 Screw quick connect into quick connect adapter until it seats. If you adjust the orientation of the pendant, be careful not to loosen the connection.

- 8 Hang A bead chains first, following the Crystal Color Map. Drop strands of crystal beads through slots in top grid.

IMPORTANT: Be sure to thread bottoms of crystal bead chains into slots in bottom grid to secure them in place.

- 9 Grasp C chain of crystal by the top crystal. Slip the chain through side opening of the grid slit. It will nest into position between the top and second crystal.