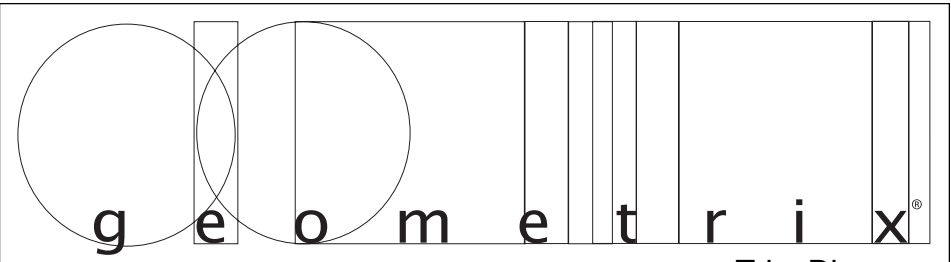
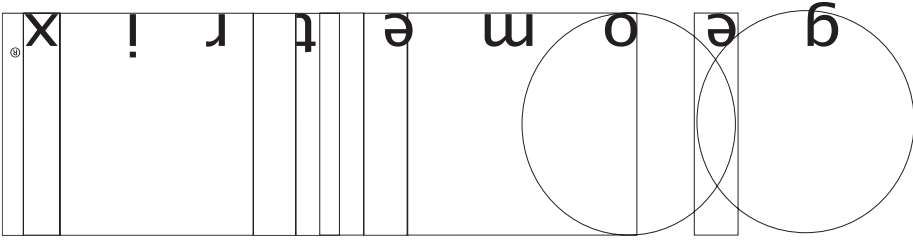
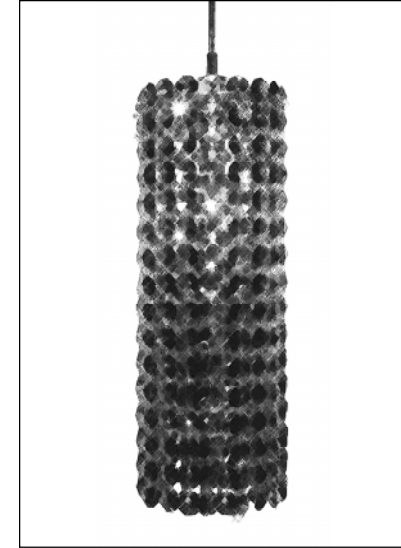


Trim Diagram
Matrix MC0410**

Important: Label on back contains important information on your crystal color. Please save in case you ever need to order matching crystal.



Trim Diagram
Matrix Pendant MC0410**



1 Light
4" x 10"

Geometrix™ is designed by Schonbek with Strass® crystal by Swarovski.



This design is the proprietary trade dress/trademark of Schonbek Worldwide Lighting Inc

Please save your trim diagram for future reference.

IMPORTANT: Label on back contains important information on your crystal color. Please save in case you ever need to order matching crystal.

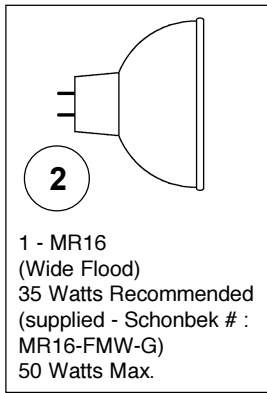


Schonbek Worldwide Lighting Inc., 61 Industrial Blvd., Plattsburgh NY 12901-1908
Tel: 800.836.1892 or 518.563.7500 www.schonbek.com

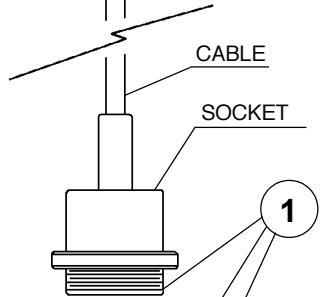
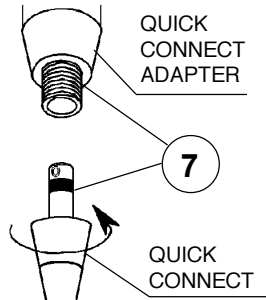
© 2004 SCHONBEK WORLDWIDE LIGHTING INC., A. SCHONBEK & CO. LTD. WORLDWIDE COPYRIGHT RESERVED

US PATENT 6,712,490 B2 & #D523,169

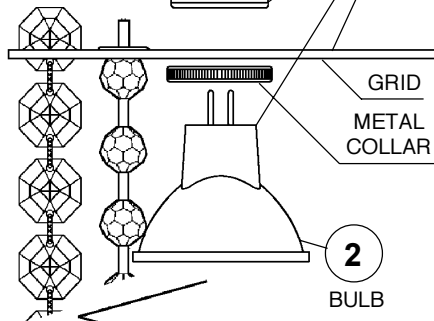
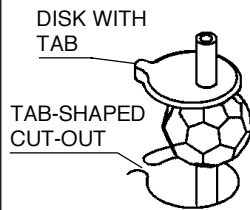




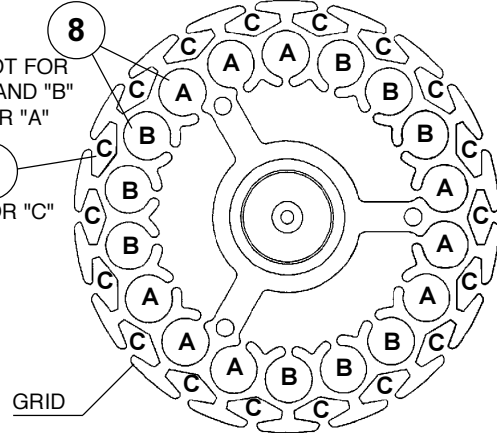
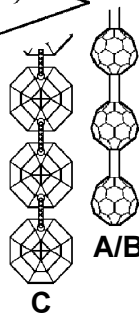
1 - MR16
(Wide Flood)
35 Watts Recommended
(supplied - Schonbek # :
MR16-FMW-G)
50 Watts Max.



Above top crystal bead in chain is a disk with tab. Make sure the tab seats firmly and lays flat in tab-shaped cut-out in grid.



Follow this
Crystal Color Map!

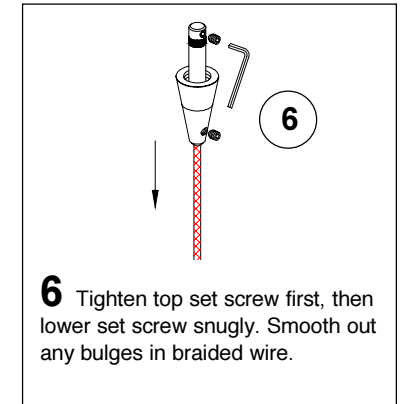
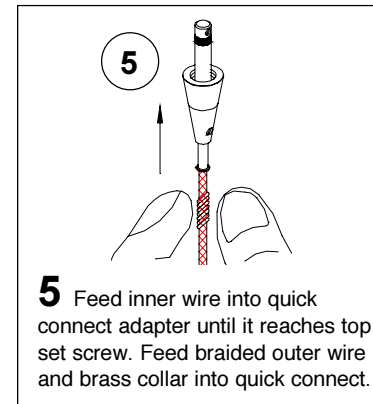
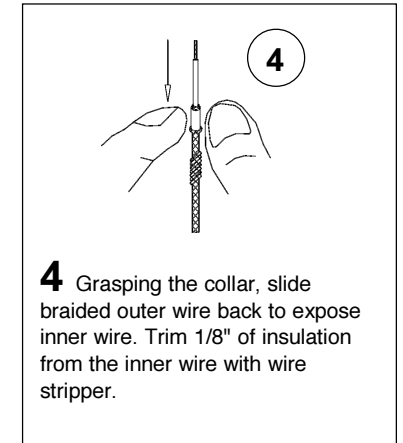
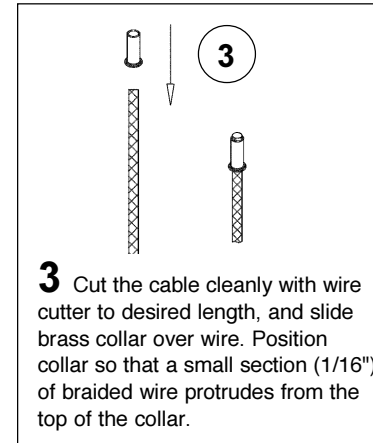


How to Install MR16 Bulb and Matrix™ Pendant:

Pendants may be mounted to monorail systems, monopoints or line voltage track by coupling to the quick connect transformer adapter. Attached to the socket is a cable that may be cut on site during installation to any length (see instructions below).

- 1 Position the pendant grid against the socket and secure in place by screwing the metal collar onto the socket.
- 2 Plug bulb carefully but completely into socket. Use only an MR16 glass covered lamp bulb.

How to Shorten the Cable:



7 Screw quick connect into quick connect adapter until it seats. If you adjust the orientation of the pendant, be careful not to loosen the connection.

8 **A** For Standard Color trimsets: Hang A and B bead chains first, following the Crystal Color Map. Drop strands of crystal beads through slots in top grid. Make sure to follow A - B pattern shown.

B For Premium Color trimsets: Hang A bead chains first, following the Crystal Color Map. Drop strands of crystal beads through slots in top grid.
IMPORTANT: Be sure to thread bottoms of crystal bead chains into slots in bottom grid to secure them in place.

9 Grasp C chain of crystal by the top crystal. Slip the chain through side opening of the grid slit. It will nest into position between the top and second crystal.