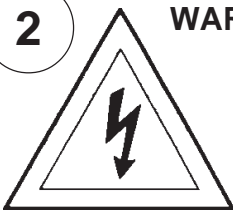


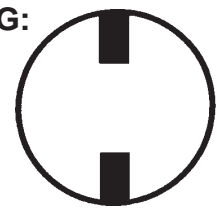
Instructions for electrician STEPS 2 - 21

2

WARNING:

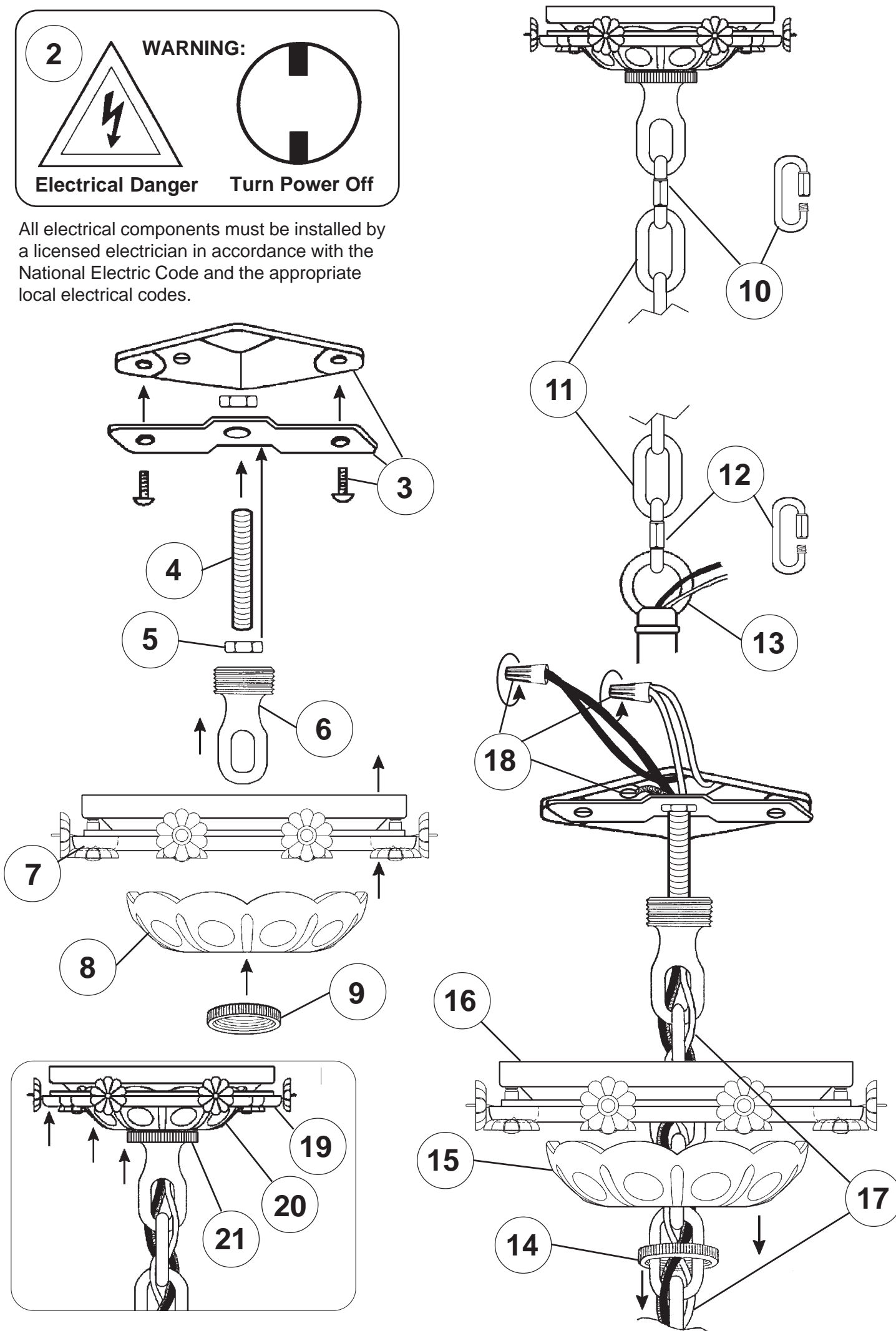


Electrical Danger



Turn Power Off

All electrical components must be installed by a licensed electrician in accordance with the National Electric Code and the appropriate local electrical codes.



CHANDELIER 5626-____ TRIM DIAGRAM (Finish Option)



9 + 1 Lights
Diameter: 30-1/2"
Body Length: 28"
Hanging Weight: 36 lbs.

THIS DESIGN IS THE PROPRIETARY
TRADE DRESS/TRADEMARK OF
SCHONBEK WORLDWIDE LIGHTING INC.

SCHONBEK®

See diagram on back page
Follow steps in exact order
Save this trim diagram for future reference

1

IMPORTANT


Person who opens carton should record the following information for future service.

CODE # _____ Four-digit number on outside of carton.
PACKER # _____ See crystal package label.
ORDER # _____ See crystal package label.

SCHONBEK IS A WORLD LEADER IN CHANDELIER DESIGN. PATENTS INCLUDE:
#D5,222,805


Instructions for crystal trimming
STEPS 22 - 35

22



You will need 1 - T7
15 Watts Max
(Center Light)


23




You will need 9 - C10
25 Watts Recommend
60 Watts Max

Install bulbs and be
sure to test fixture
BEFORE trimming.

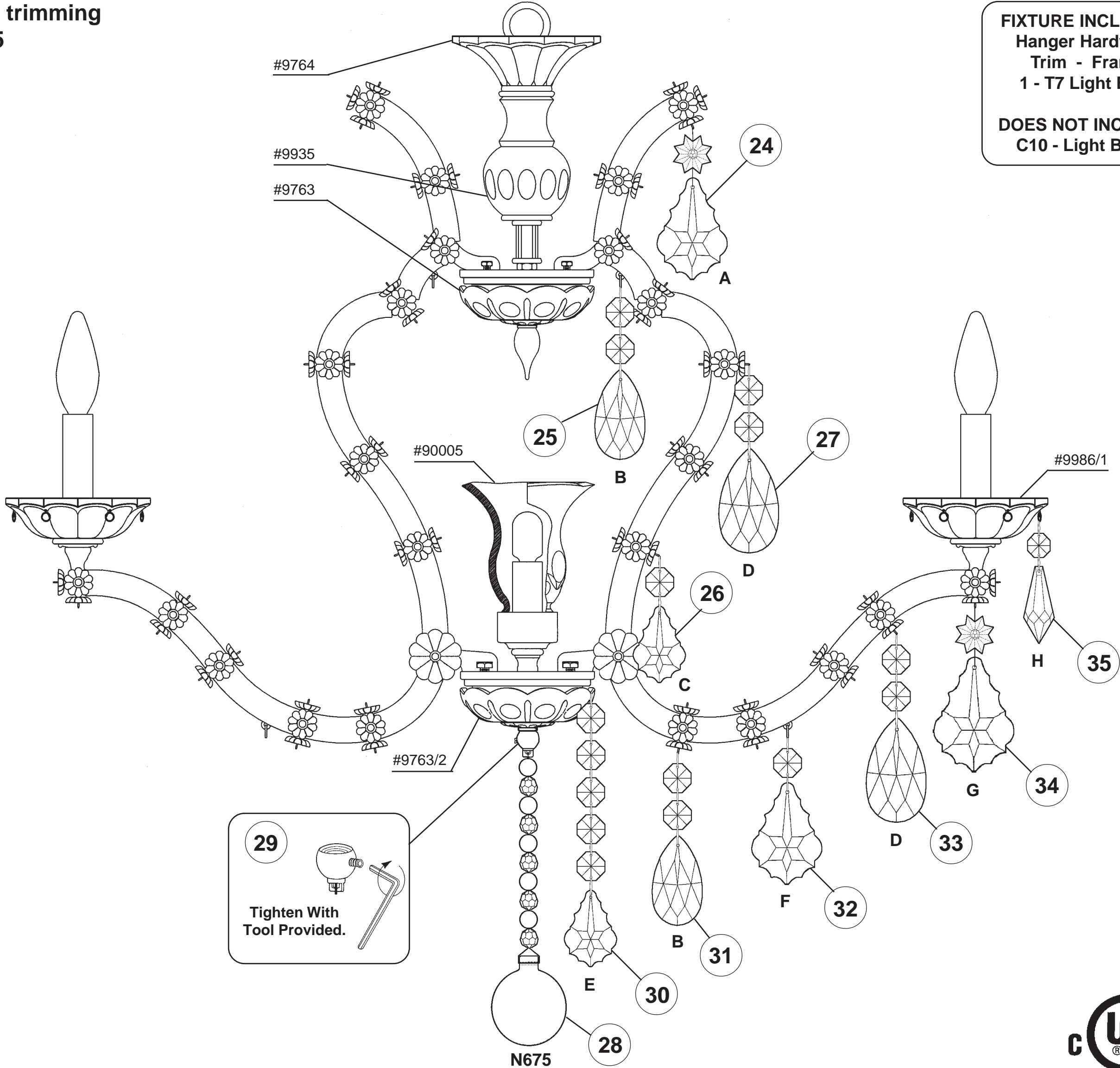
HANG
CRYSTAL
WITH FLAT
SIDE TO
FRONT



29



Tighten With
Tool Provided.



FIXTURE INCLUDES:
Hanger Hardware
Trim - Frame
1 - T7 Light Bulb

DOES NOT INCLUDE:
C10 - Light Bulbs