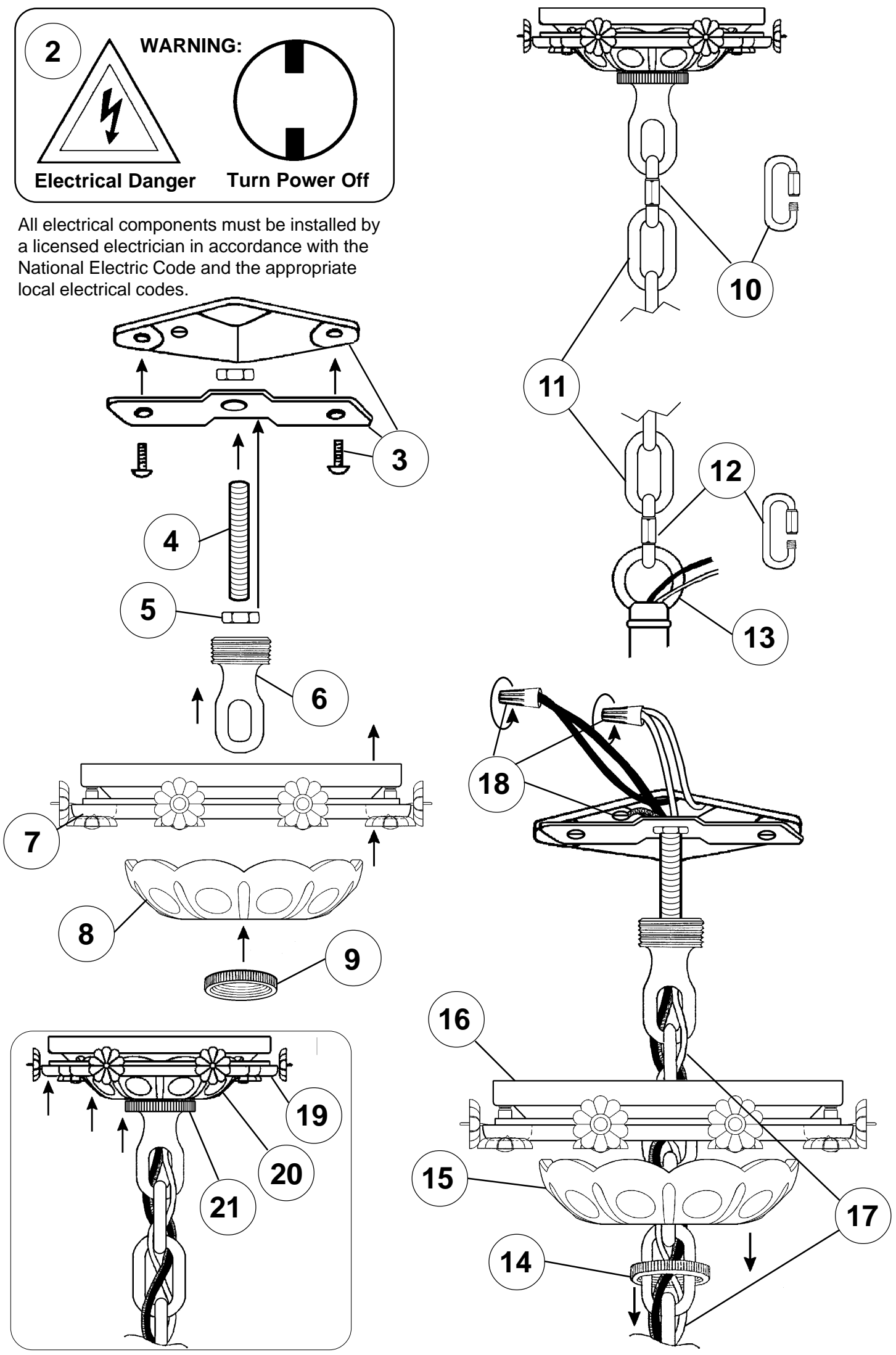


Instructions for electrician  
STEPS 2 - 21

**2** **WARNING:**

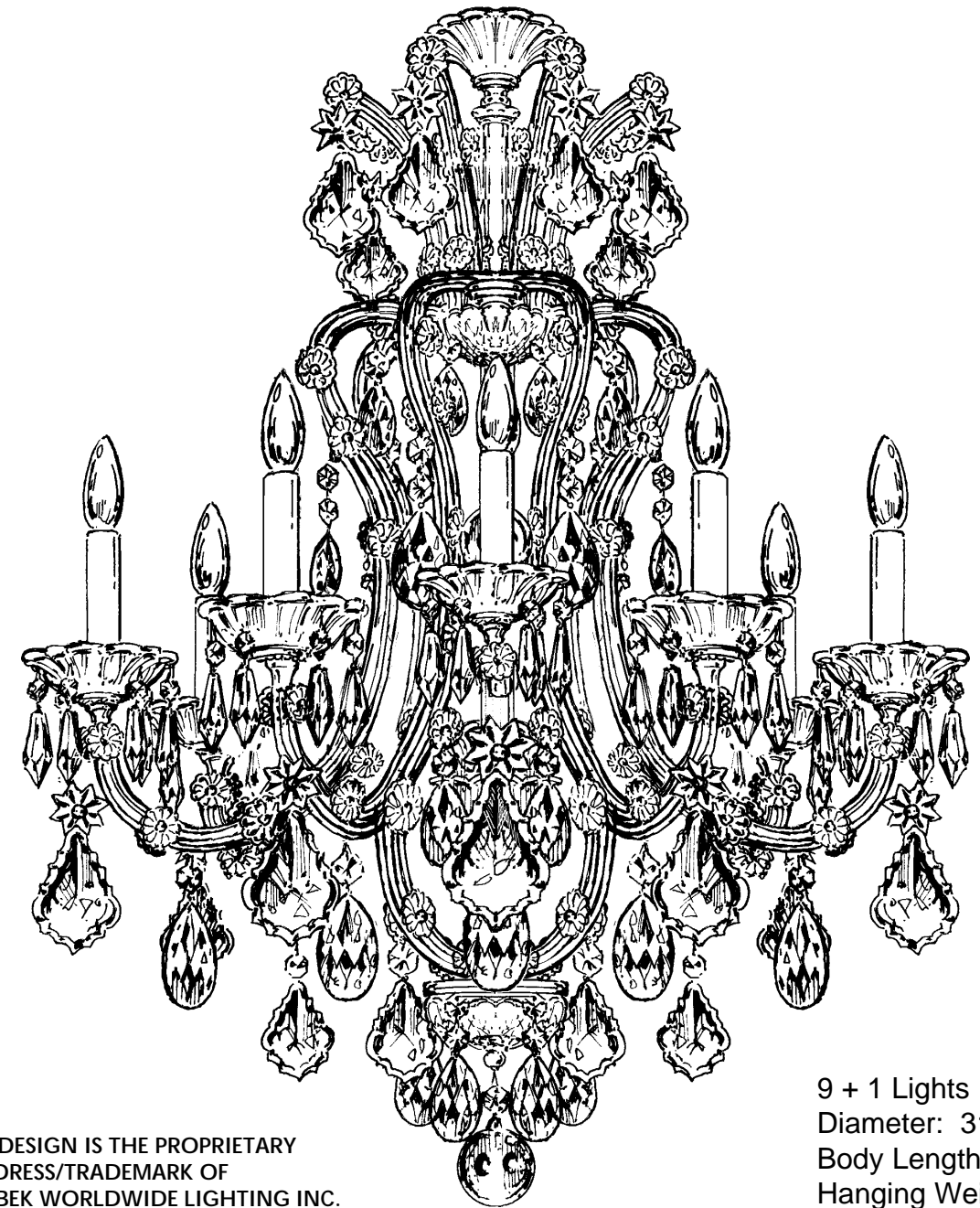
**Electrical Danger Turn Power Off**

All electrical components must be installed by a licensed electrician in accordance with the National Electric Code and the appropriate local electrical codes.



CHANDELIER 5609-\_\_\_ TRIM DIAGRAM

(Finish Option)



9 + 1 Lights  
Diameter: 31-1/2"  
Body Length: 37-1/2"  
Hanging Weight: 45 lbs.

**T**HIS DESIGN IS THE PROPRIETARY TRADE DRESS/TRADEMARK OF SCHONBEK WORLDWIDE LIGHTING INC.

**SCHONBEK**<sup>®</sup>

See diagram on back page  
Follow steps in exact order  
Save this trim diagram for future reference

**1** **IMPORTANT**  
*Person who opens carton should record the following information for future service.*

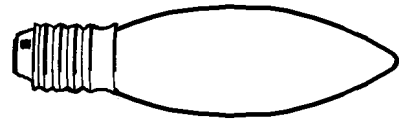
CODE #	_____	Four-digit number on outside of carton.
PACKER #	_____	See crystal package label.
ORDER #	_____	See crystal package label.

SCHONBEK IS A WORLD LEADER IN CHANDELIER DESIGN. PATENTS INCLUDE:  
#D5,222,805

**Instructions for crystal trimming**  
**STEPS 22 - 38**



**22**  
 You will need 1 - T7  
 15 Watts Max  
 (Center Light)

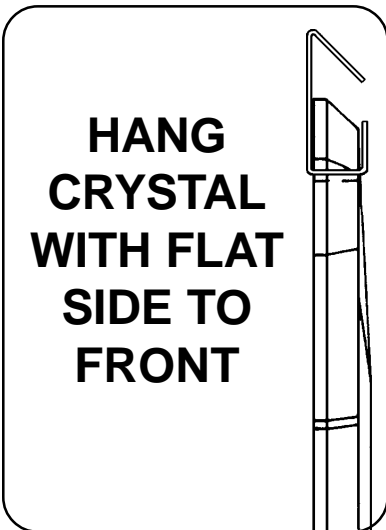


**23**  
 You will need 9 - C10  
 25 Watts Recommended  
 60 Watts Max

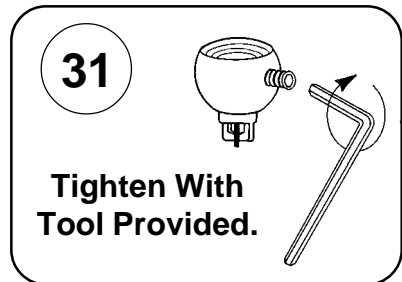
**Install bulbs and be sure  
 to test fixture BEFORE  
 trimming.**



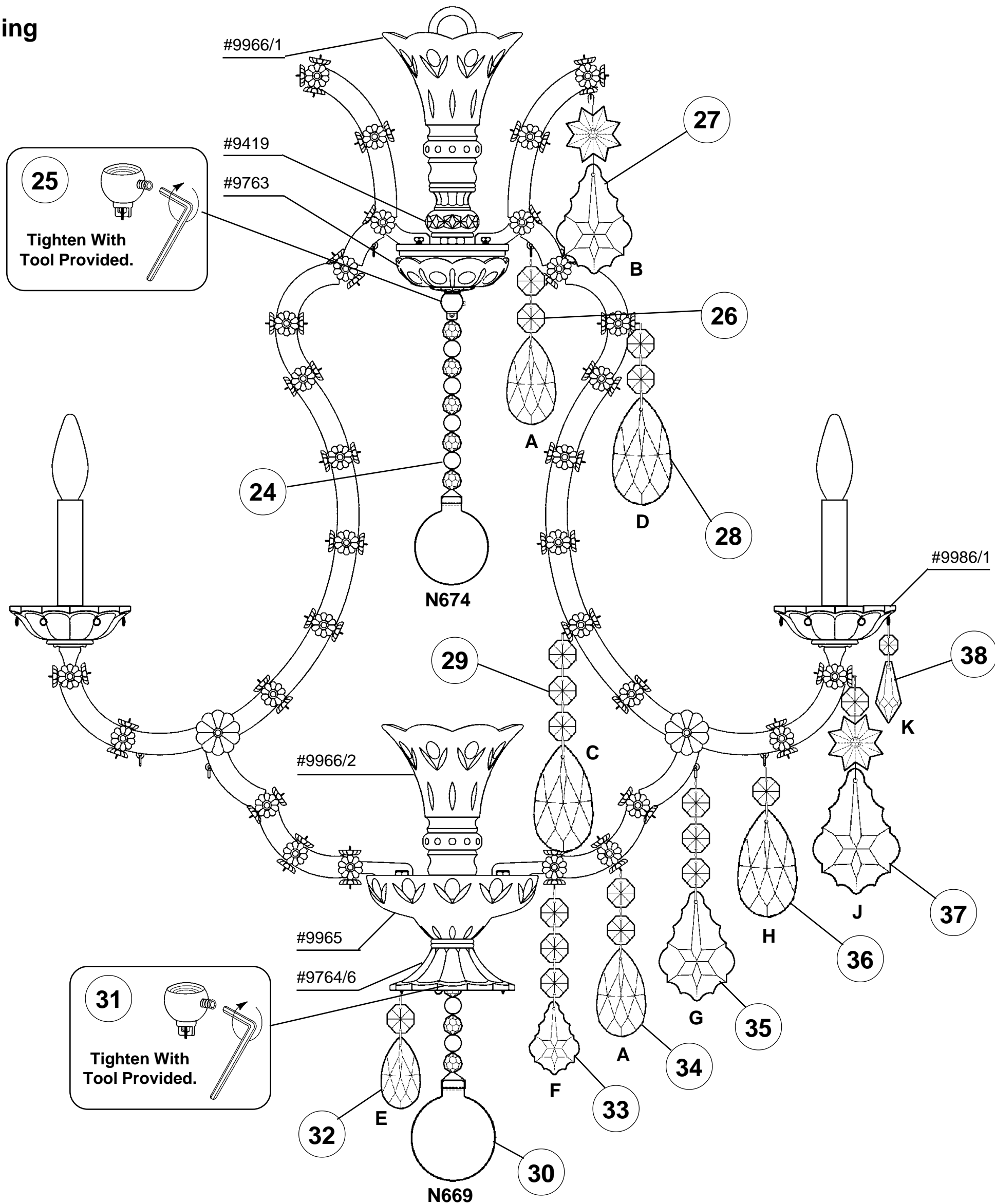
**25**  
 Tighten With  
 Tool Provided.



**HANG  
 CRYSTAL  
 WITH FLAT  
 SIDE TO  
 FRONT**



**31**  
 Tighten With  
 Tool Provided.



**FIXTURE INCLUDES:**  
 Hanger Hardware  
 Trim - Frame  
 1 - T7 Light Bulb

**DOES NOT INCLUDE:**  
 C10 - Light Bulbs

