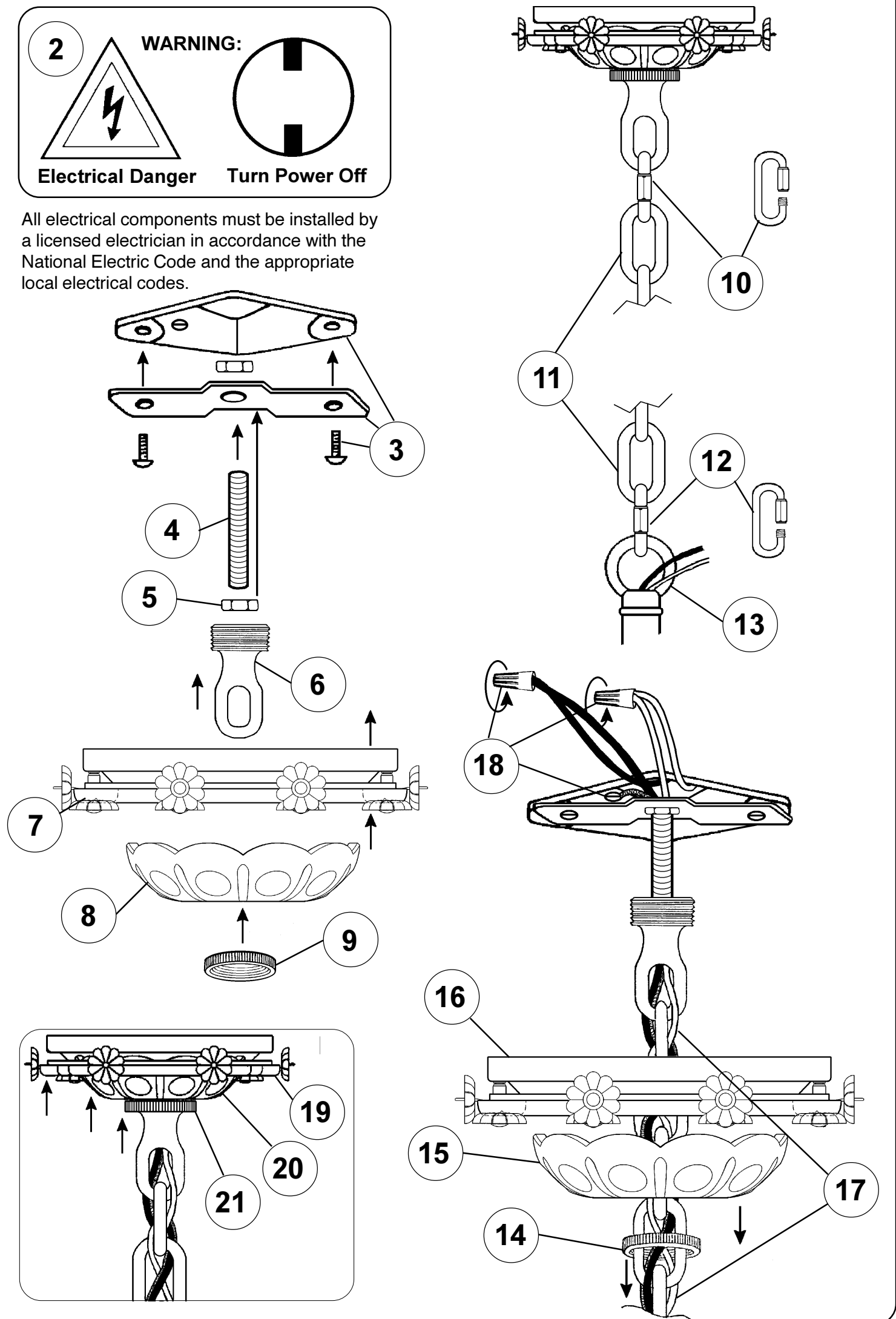


Instructions for electrician
STEPS 2 - 21

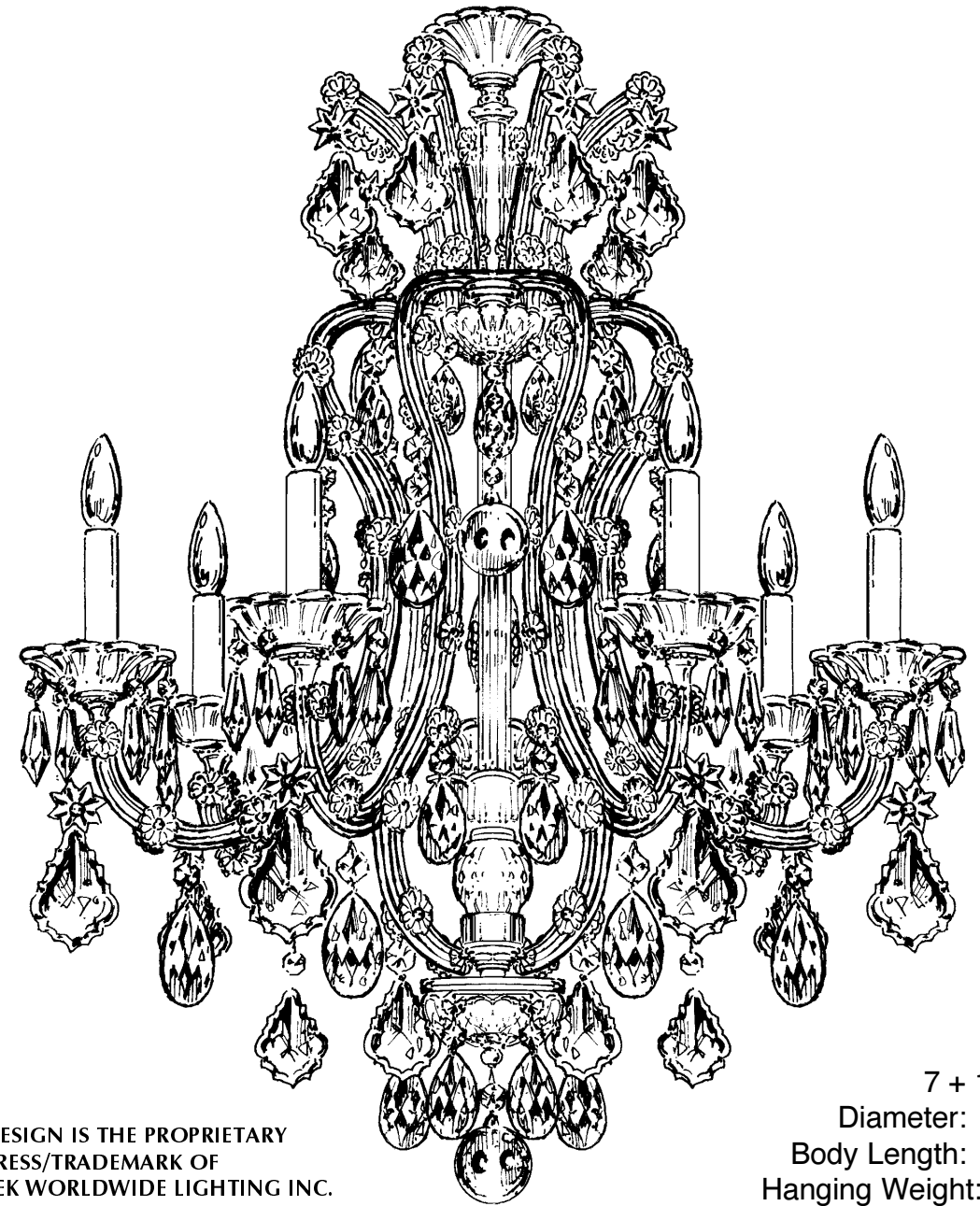
2 **WARNING:**

Electrical Danger Turn Power Off

All electrical components must be installed by a licensed electrician in accordance with the National Electric Code and the appropriate local electrical codes.



CHANDELIER 5607- _____ TRIM DIAGRAM
(Finish Option)



7 + 1 Lights
Diameter: 26-1/2"
Body Length: 33-1/2"
Hanging Weight: 32 lbs.

THIS DESIGN IS THE PROPRIETARY TRADE DRESS/TRADEMARK OF SCHONBEK WORLDWIDE LIGHTING INC.

SCHONBEK®

See diagram on back page
Follow steps in exact order
Save this trim diagram for future reference

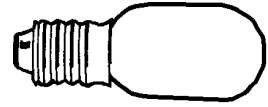
1 **IMPORTANT**
Person who opens carton should record the following information for future service.

CODE # _____ Four-digit number on outside of carton.
PACKER # _____ See crystal package label.
ORDER # _____ See crystal package label.

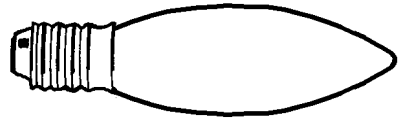
SCHONBEK IS A WORLD LEADER IN CHANDELIER DESIGN. PATENTS INCLUDE:
#D5,222,805

Instructions for crystal trimming
STEPS 22 - 36

22



You will need 1 - T7
15 Watts Max
(Center Light)

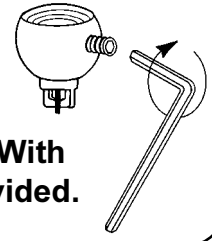


23

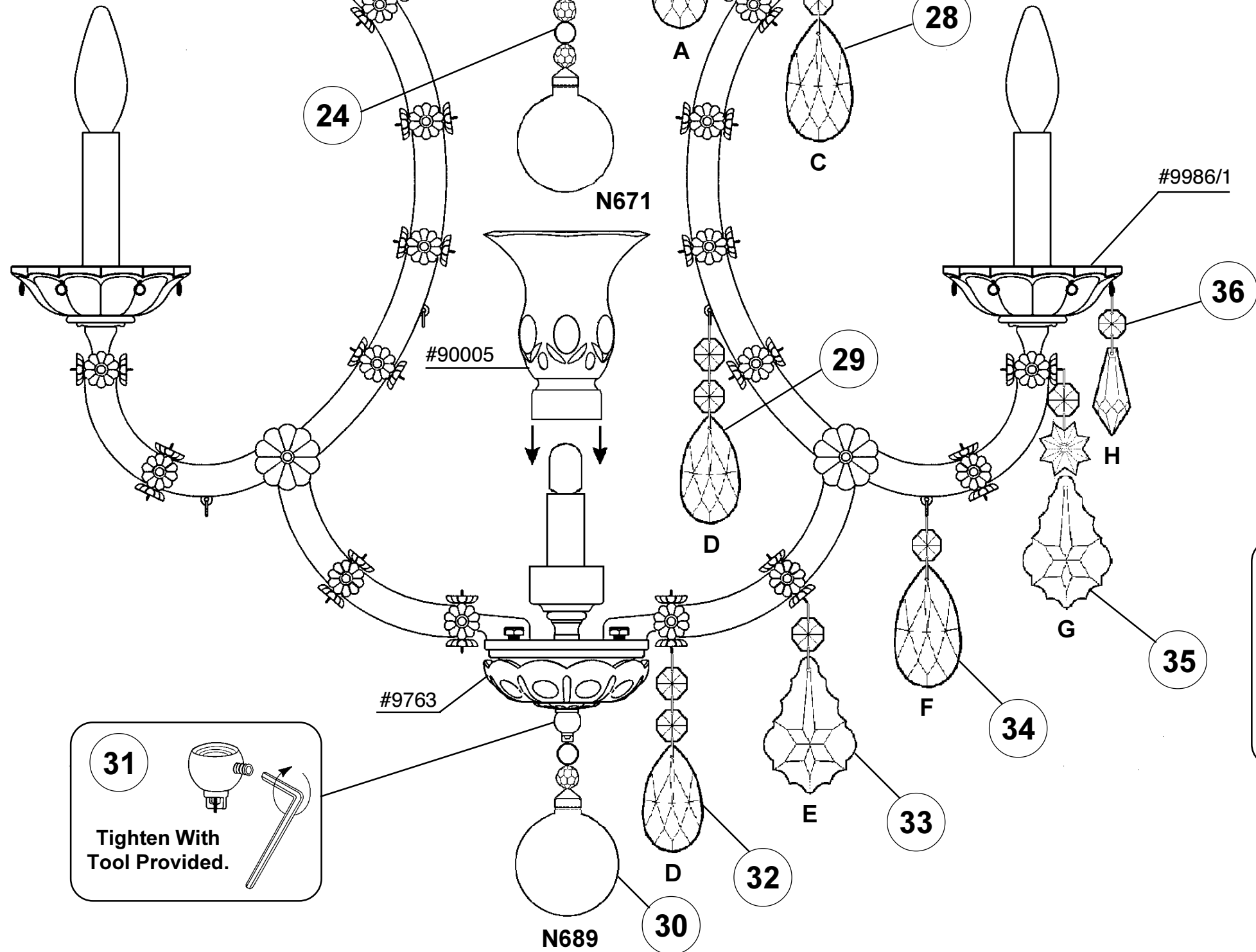
You will need 7 - C10
25 Watts Recommended
60 Watts Max

Install bulbs and be sure
to test fixture **BEFORE**
trimming.

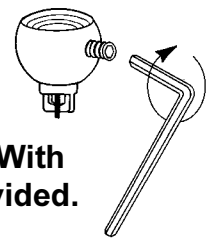
25



Tighten With
Tool Provided.



31



Tighten With
Tool Provided.

**HANG
CRYSTAL
WITH FLAT
SIDE TO
FRONT**



FIXTURE INCLUDES:
Hanger Hardware
Trim - Frame
1 - T7 Light Bulb

DOES NOT INCLUDE:
C10 - Light Bulbs

