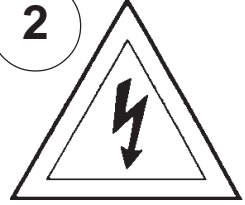


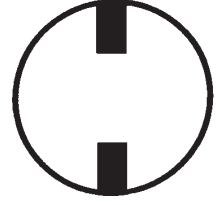
Instructions for electrician STEPS 2 - 18

WARNING:

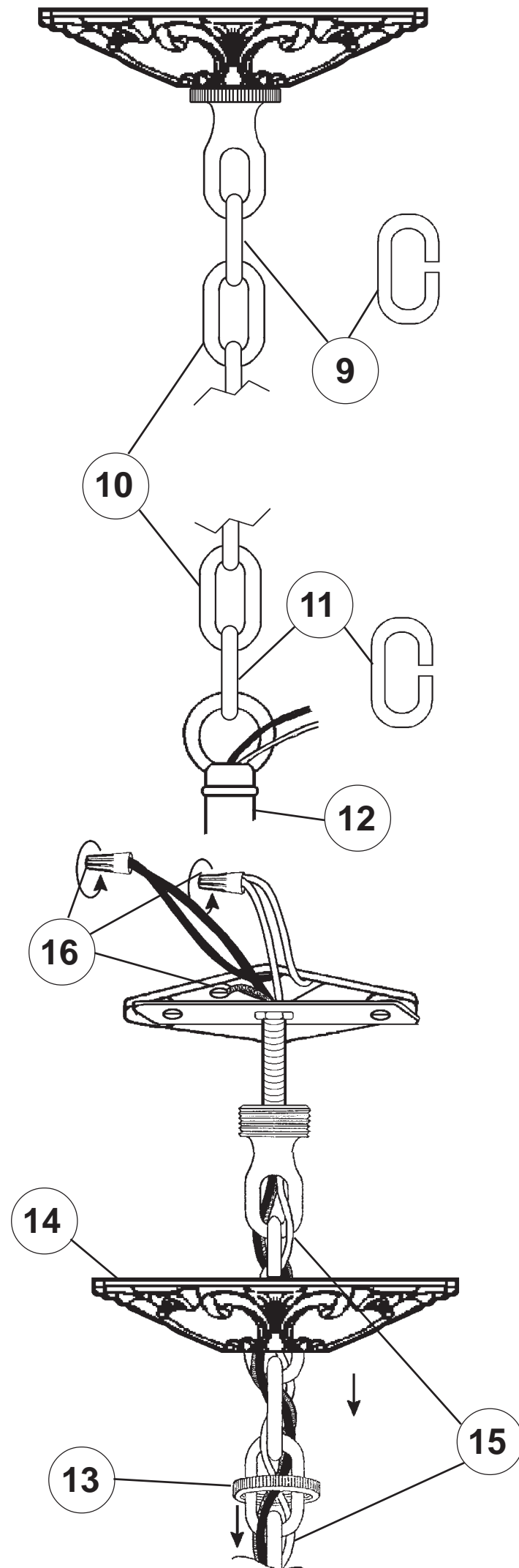
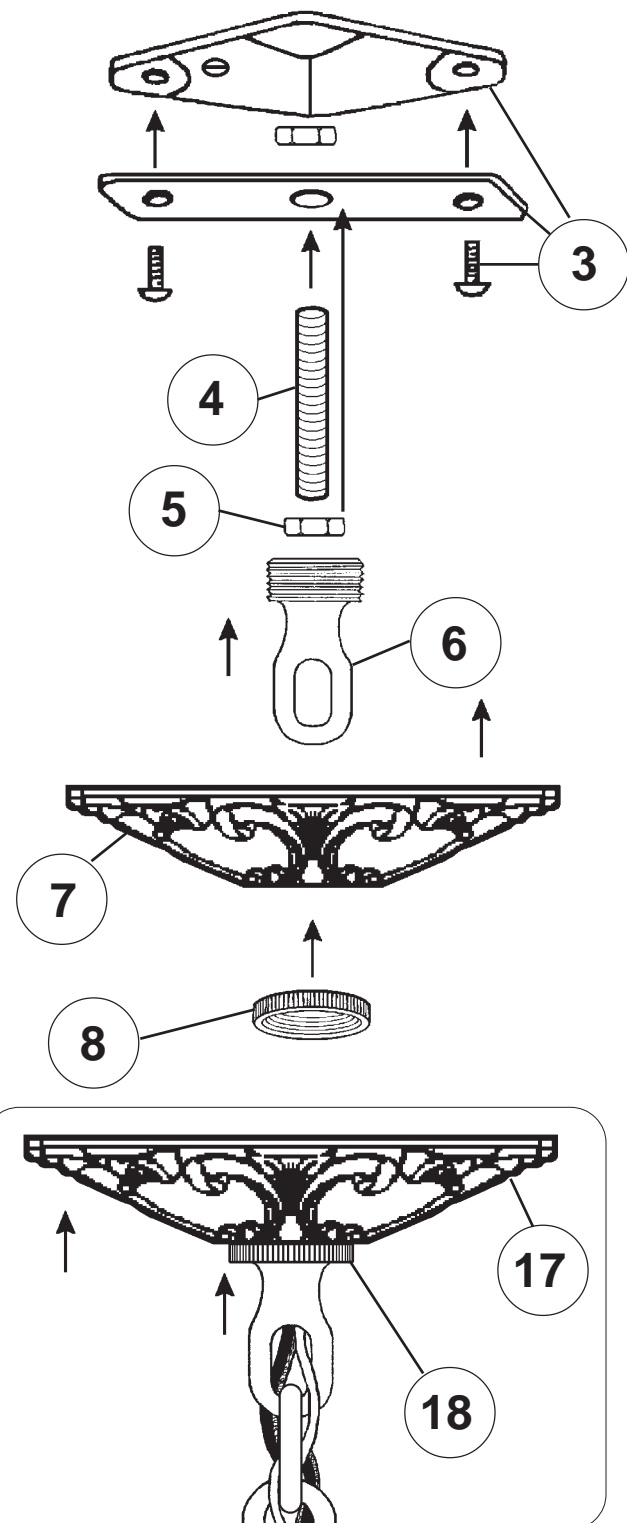
2



Electrical Danger Turn Power Off

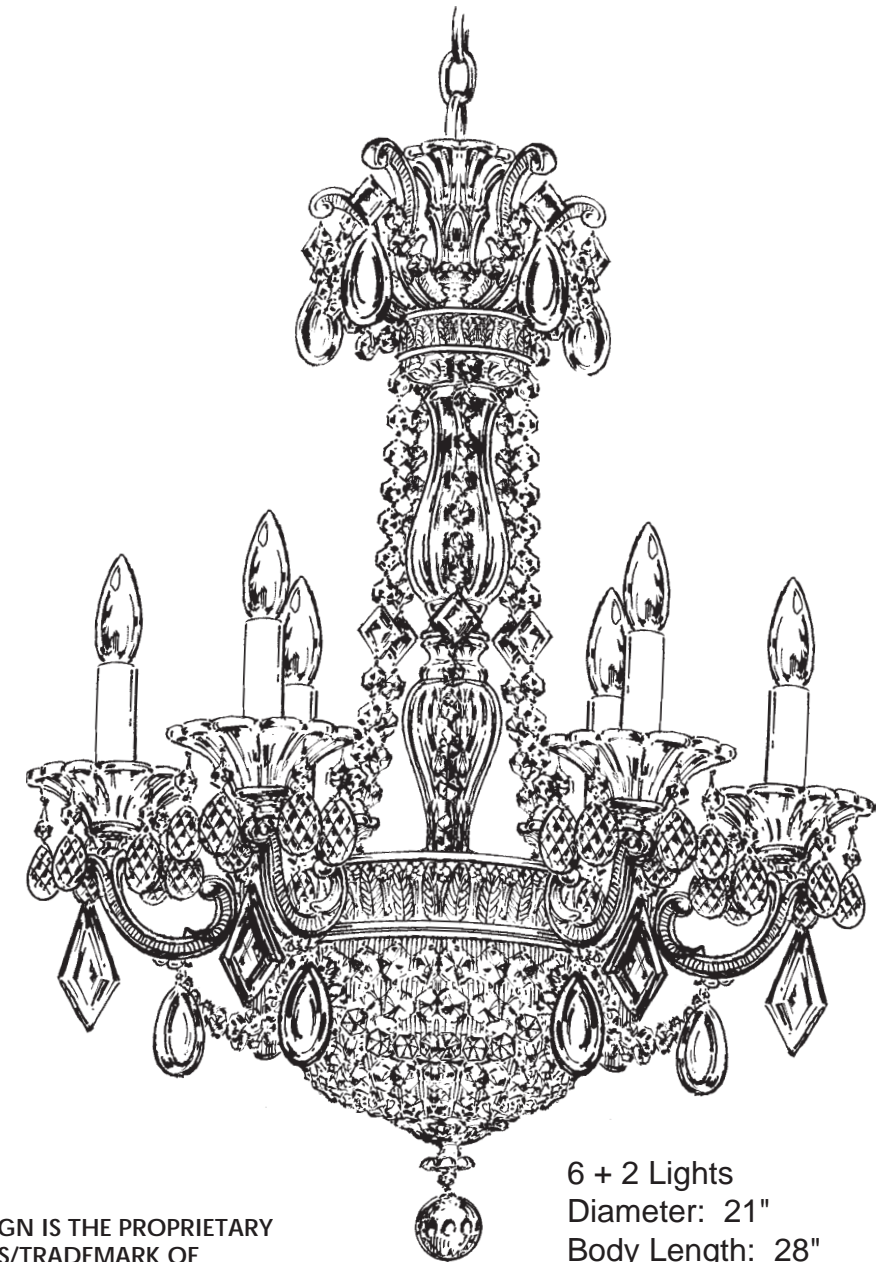


All electrical components must be installed by a licensed electrician in accordance with the National Electric Code and the appropriate local electrical codes.



CHANDELIER 5076-___ TRIM DIAGRAM

(Finish Option)



THIS DESIGN IS THE PROPRIETARY
TRADE DRESS/TRADEMARK OF
SCHONBEK WORLDWIDE LIGHTING INC.

6 + 2 Lights
Diameter: 21"
Body Length: 28"
Hanging Weight: 16 lbs.

SCHONBEK®

See diagram on back page
Follow steps in exact order
Save this trim diagram for future reference

1

IMPORTANT

Person who opens carton should record the following information for future service.

CODE # _____ Four-digit number on outside of carton.
PACKER # _____ See crystal package label.
ORDER # _____ See crystal package label.

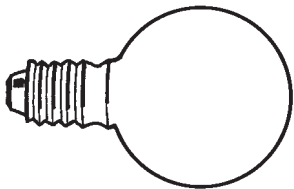
SCHONBEK IS A WORLD LEADER IN CHANDELIER DESIGN. PATENTS INCLUDE:
#D5,222,805

Instructions for crystal trimming
STEPS 19 - 29



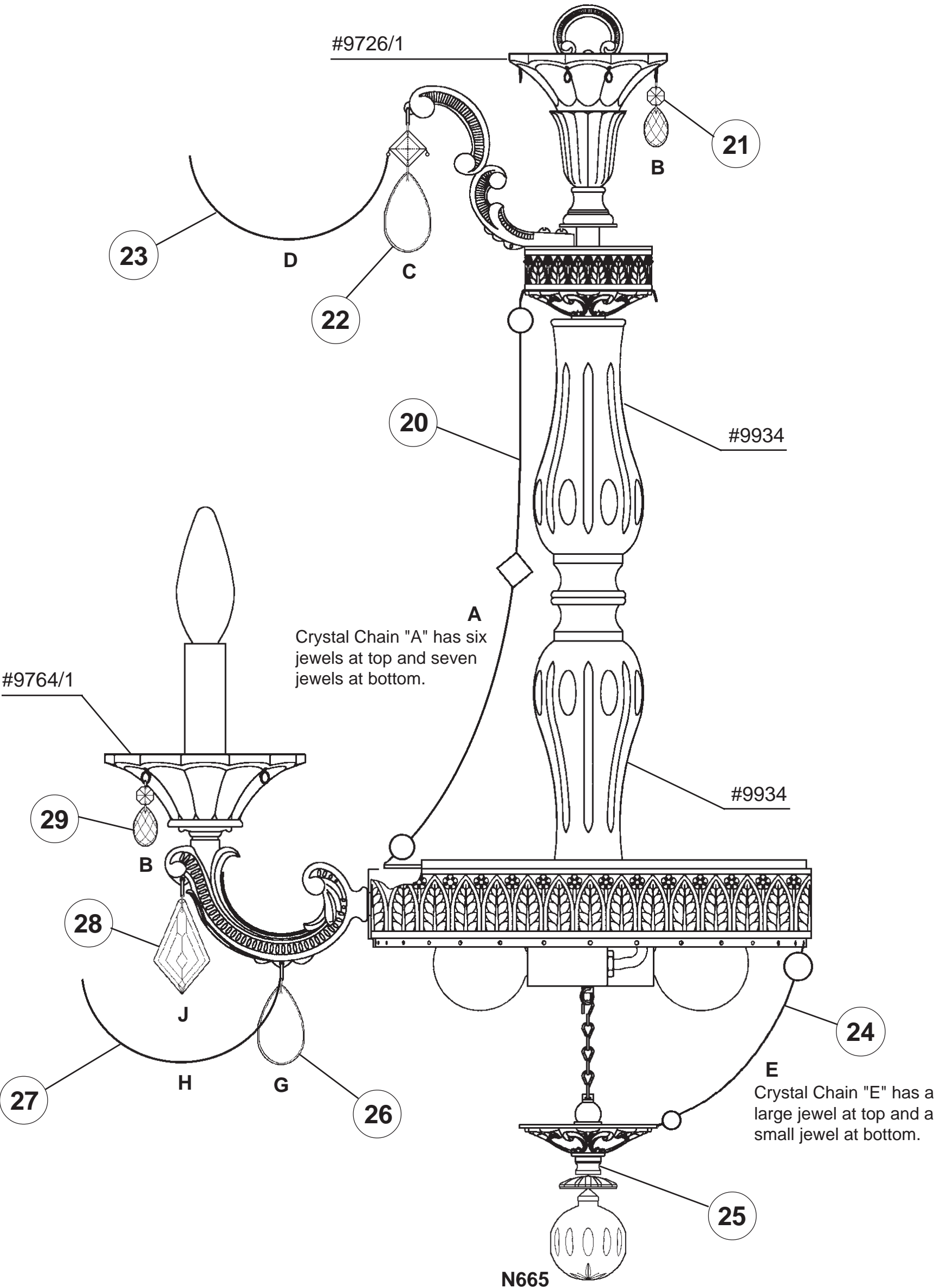
19

You will need 6 - C10
25 Watts Recommended
60 Watts Max



You will need 2 - G16-1/2
25 Watts Recommended
60 Watts Max

Install bulbs and be
sure to test fixture
BEFORE trimming.



**HANG
CRYSTAL
WITH FLAT
SIDE FACING
FRONT**