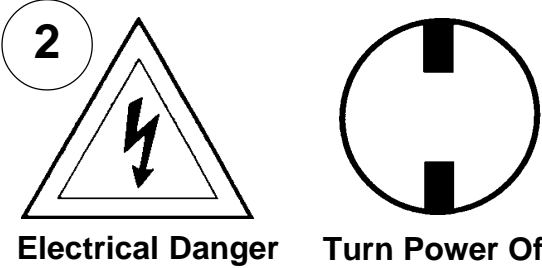


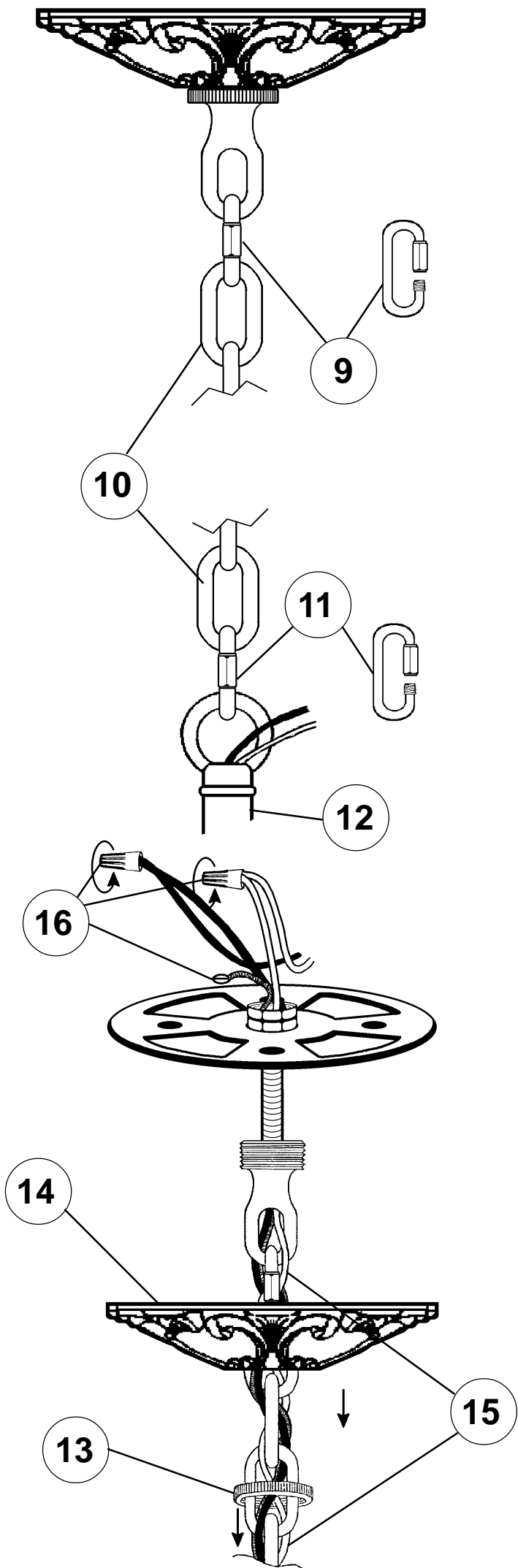
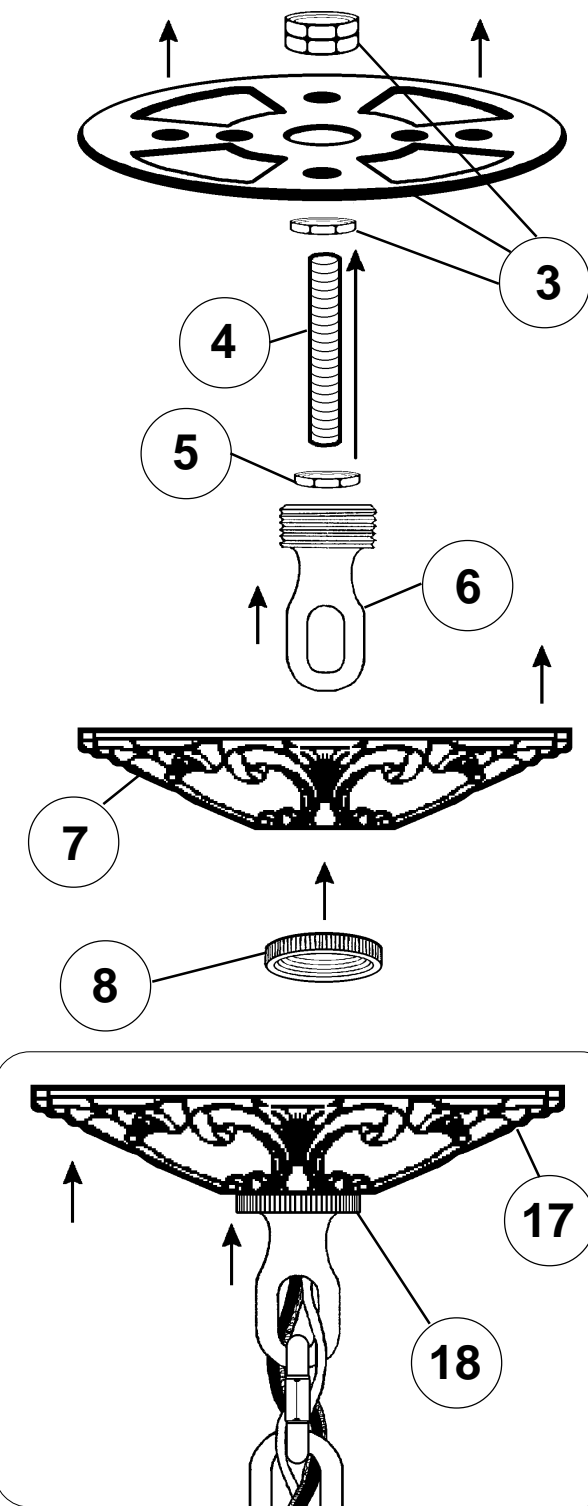
Instructions for electrician
STEPS 2 - 18

WARNING: THIS LUMINAIRE MUST BE MOUNTED OR SUPPORTED INDEPENDENTLY OF AN OUTLET BOX.

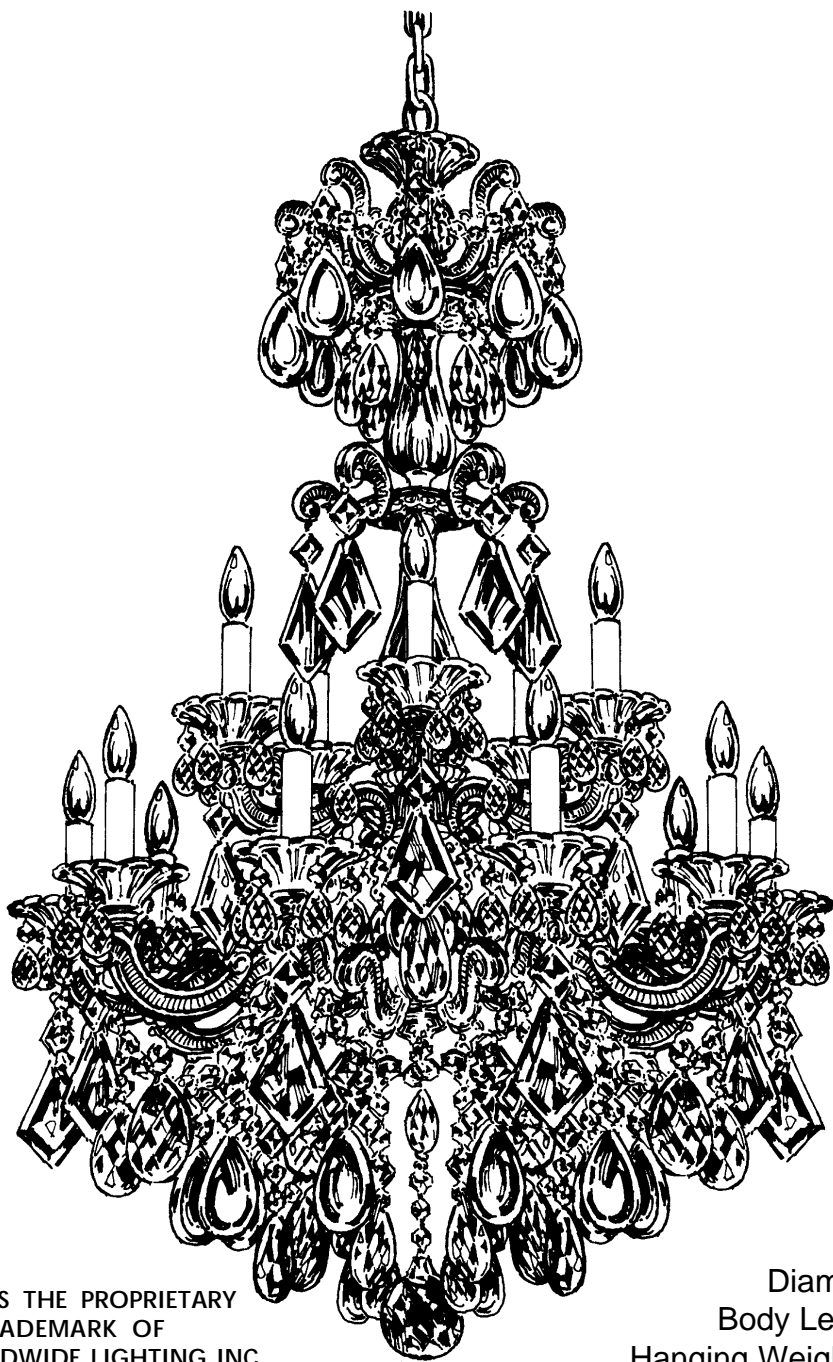
WARNING:



All electrical components must be installed by a licensed electrician in accordance with the National Electric Code and the appropriate local electrical codes.



CHANDELIER 5010- _____ TRIM DIAGRAM
(Finish Option)



15 Lights
Diameter: 28"
Body Length: 45"
Hanging Weight: 58 lbs.

THIS DESIGN IS THE PROPRIETARY
TRADE DRESS/TRADEMARK OF
SCHONBEK WORLDWIDE LIGHTING INC.

SCHONBEK®

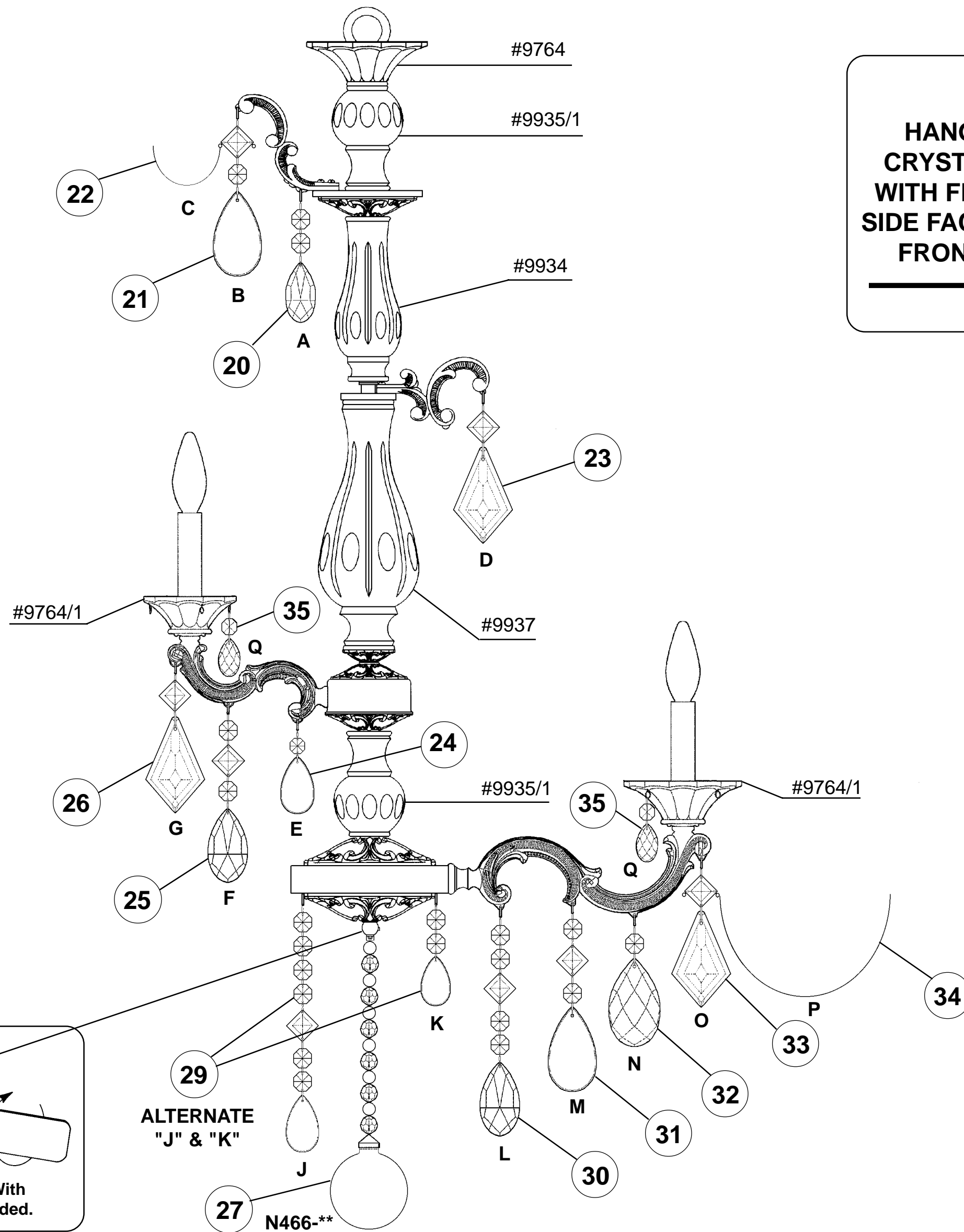
See diagram on back page
Follow steps in exact order
Save this trim diagram for future reference

1 **IMPORTANT**
Person who opens carton should record the following information for future service.
CODE # _____ Four-digit number on outside of carton.
PACKER # _____ See crystal package label.
ORDER # _____ See crystal package label.

STEPS 19 - 35



Install bulbs and be sure to test fixture BEFORE trimming.



**HANG
CRYSTAL
WITH FLAT
SIDE FACING
FRONT**

