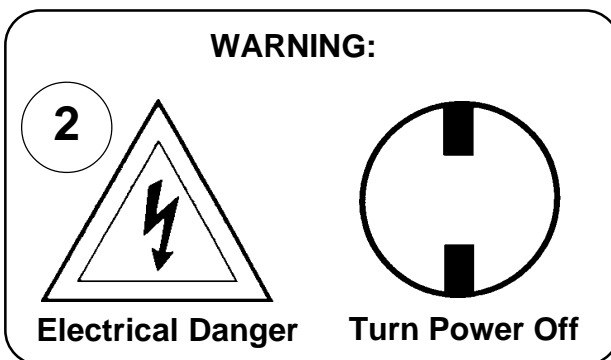
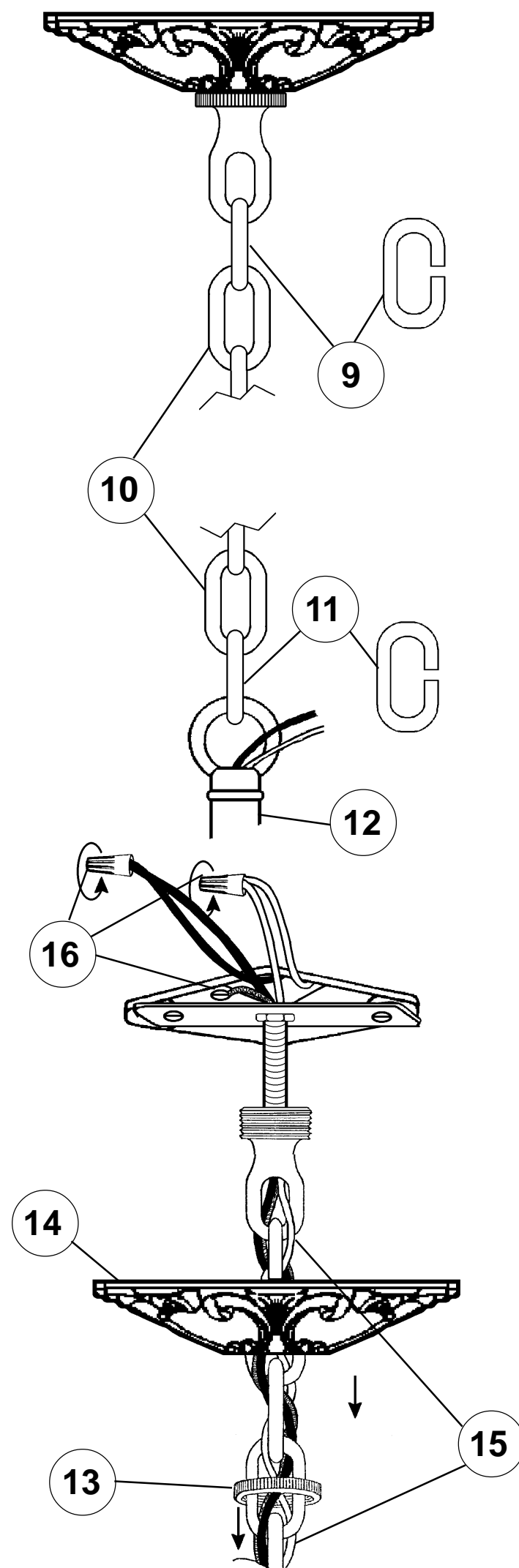
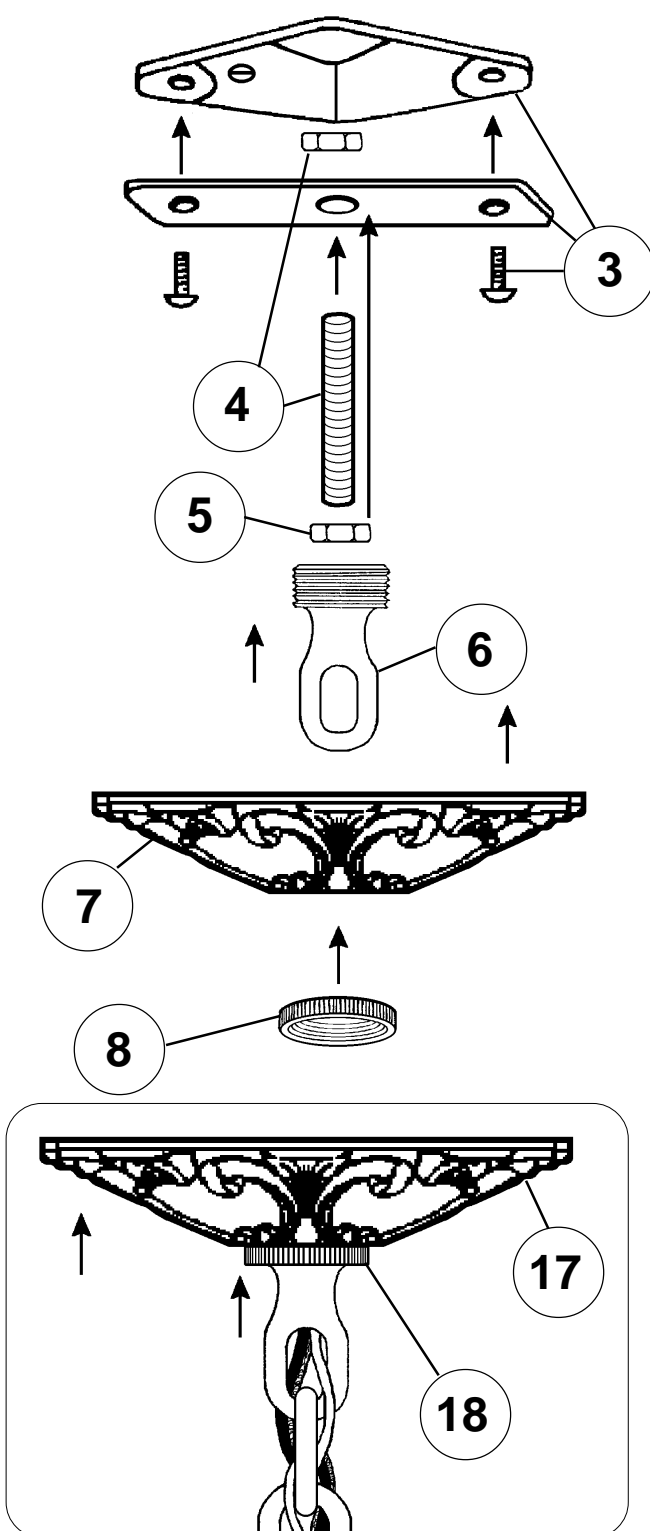


## Instructions for electrician STEPS 2 - 18



All electrical components must be installed by a licensed electrician in accordance with the National Electric Code and the appropriate local electrical codes.



## CHANDELIER 5005- \_\_\_\_\_ TRIM DIAGRAM

(Finish Option)



5 Lights  
Diameter: 17"  
Body Length: 24"  
Hanging Weight: 16 lbs.

**T** HIS DESIGN IS THE PROPRIETARY  
TRADE DRESS/TRADEMARK OF  
SCHONBEK WORLDWIDE LIGHTING INC.


# SCHONBEK®

See diagram on back page  
Follow steps in exact order  
Save this trim diagram for future reference

**1** **IMPORTANT**  
*Person who opens carton should record the following information for future service.*

CODE #	_____	Four-digit number on outside of carton.
PACKER #	_____	See crystal package label.
ORDER #	_____	See crystal package label.

Instructions for crystal trimming  
STEPS 19 - 29



**19**

You will need 5 - C10  
25 Watts Recommended  
60 Watts Max

Install bulbs and be  
sure to test fixture  
**BEFORE** trimming.

**HANG  
CRYSTAL  
WITH FLAT  
SIDE FACING  
FRONT**

