


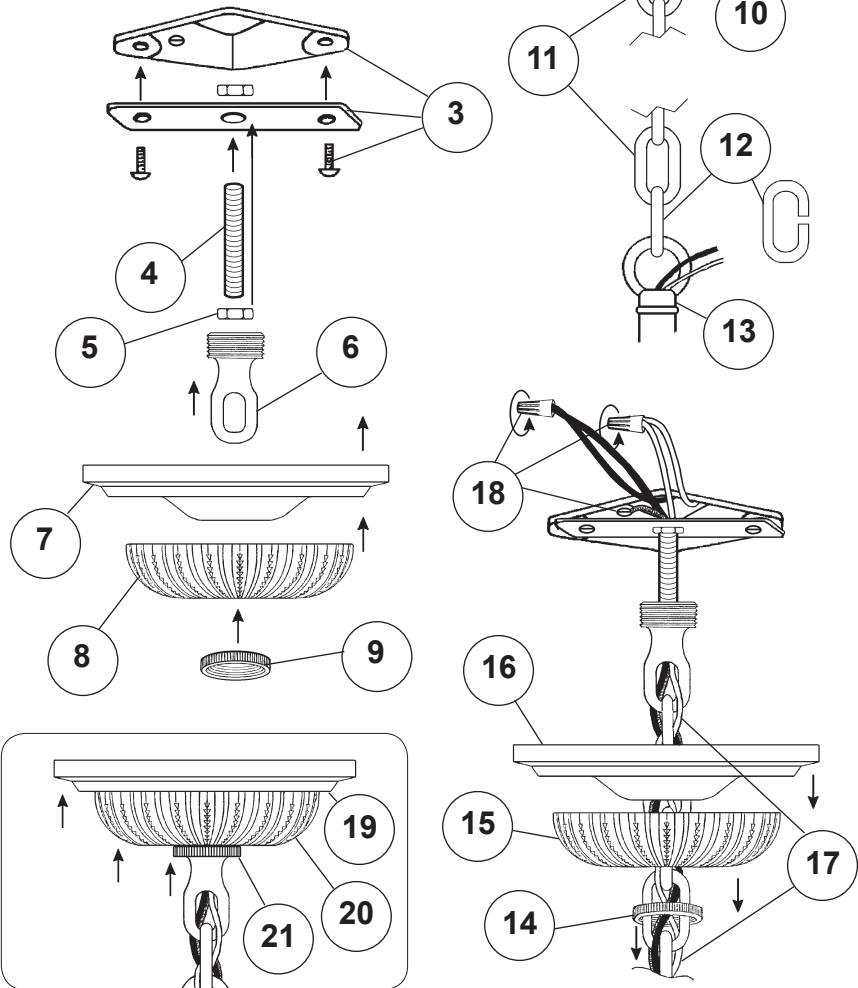
Instructions for electrician
STEPS 2 - 21

2 **WARNING:**



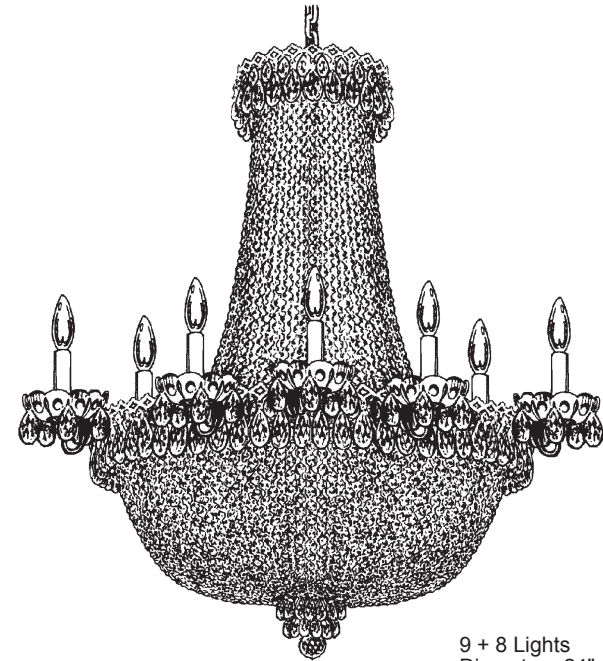
Electrical Danger Turn Power Off

All electrical components must be installed by a licensed electrician in accordance with the National Electric Code and the appropriate local electrical codes.



CHANDELIER 2621- ____ TRIM DIAGRAM

(Finish Option)



THIS DESIGN IS THE PROPRIETARY TRADE DRESS/TRADEMARK OF SWAROVSKI LIGHTING, LTD.

9 + 8 Lights
Diameter: 24"
Body Length: 26-1/2"
Hanging Weight: 20 lbs.

SCHONBEK®

See diagram on back page
Follow steps in exact order
Save this trim diagram for future reference

IMPORTANT

1 *Person who opens carton should record the following information for future service.*


CODE # _____ Four-digit number on outside of carton.
PACKER # _____ See crystal package label.
ORDER # _____ See crystal package label.



Instructions for crystal trimming
STEPS 22 - 35



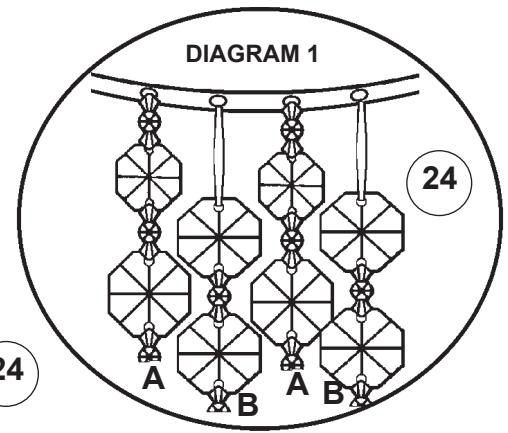
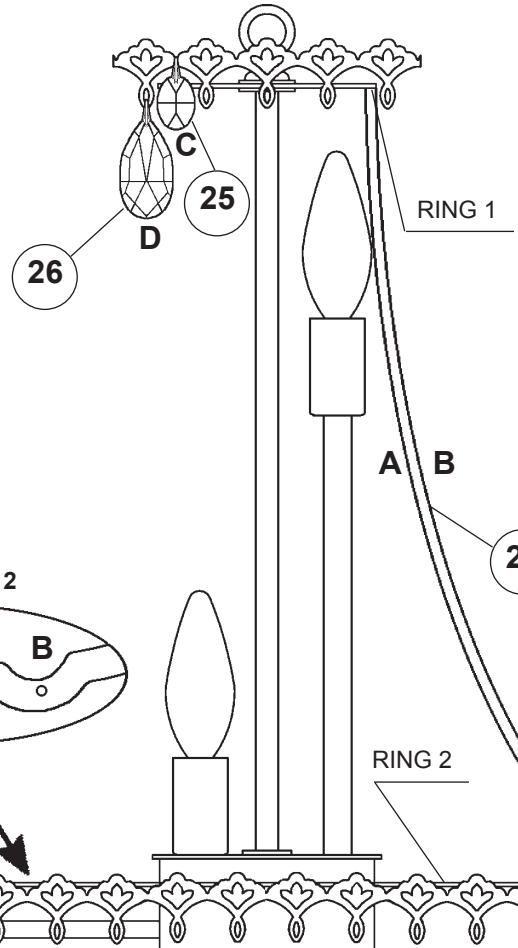
22



You will need 17 - B10
 25 Watts Recommended
 60 Watts Max

**Install bulb and be sure
 to test fixture BEFORE
 trimming.**

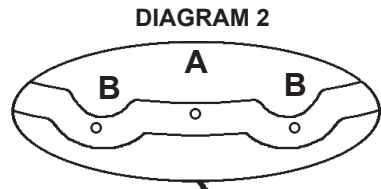
23 Attach the bottom
 finial section by
 attaching the jackchain into
 the half ball located on the
 bottom of the frame.



Small jewel at top and graduates to a larger jewel toward bottom of chain.

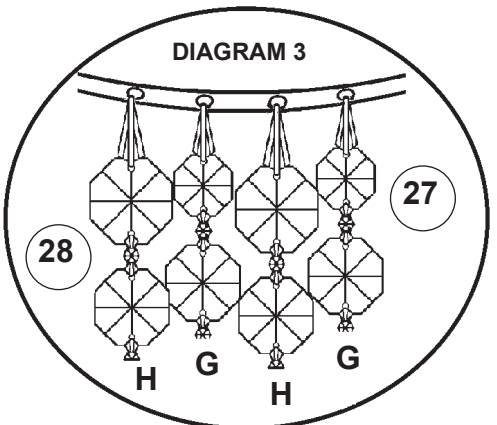
BOBECHE
 9763/1 = Gold Pins
 9763/2 = Silver Pins

**NOTE: Hang drop "C"
 from scallop, NOT
 through the loop on the
 gallery.**



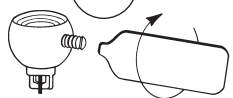
**NOTE: Skip hanging
 Drops "C" where the
 arms are located.**

**NOTE: Raise the large
 finial washer for easier
 installation of Chains "H".**



Large jewel at top and graduates to a smaller jewel toward bottom of chain.

30



**Tighten With
 Tool Provided.**

